

FOR LEASE

KEATING PLACE, 190 VICTORIA ROAD DARTMOUTH, NOVA SCOTIA

Prime leasing opportunity for 3,500
sq. ft. ground floor office space



Geof Ralph

☎ (902) 444-4004

📱 (902) 877-9324

✉ geof@partnersglobal.com

partnersglobal.com



KEATING PLACE, 190 VICTORIA ROAD | DARTMOUTH, NS

Prime leasing opportunity for 3,500 sq. ft. ground floor office space

Conveniently positioned along Victoria Road, in a bustling, high-traffic area, Keating Place is a two-storey office building, offering a prime office leasing opportunity on its ground floor. This property offers outstanding visibility, generous free surface parking, prospects for exterior signage, and seamless accessibility to both downtown Dartmouth and Halifax.

The available ground floor space, totaling 3,500 sq. ft., is fully accessible and thoughtfully designed, blending private and open work areas. The option to lease the space fully furnished is available, with good quality leaseholds in place. Ideal for professional services or general office use, reach out to the listing agent to uncover the full potential of Keating Place!



High Vehicular Area



Signage Opportunities



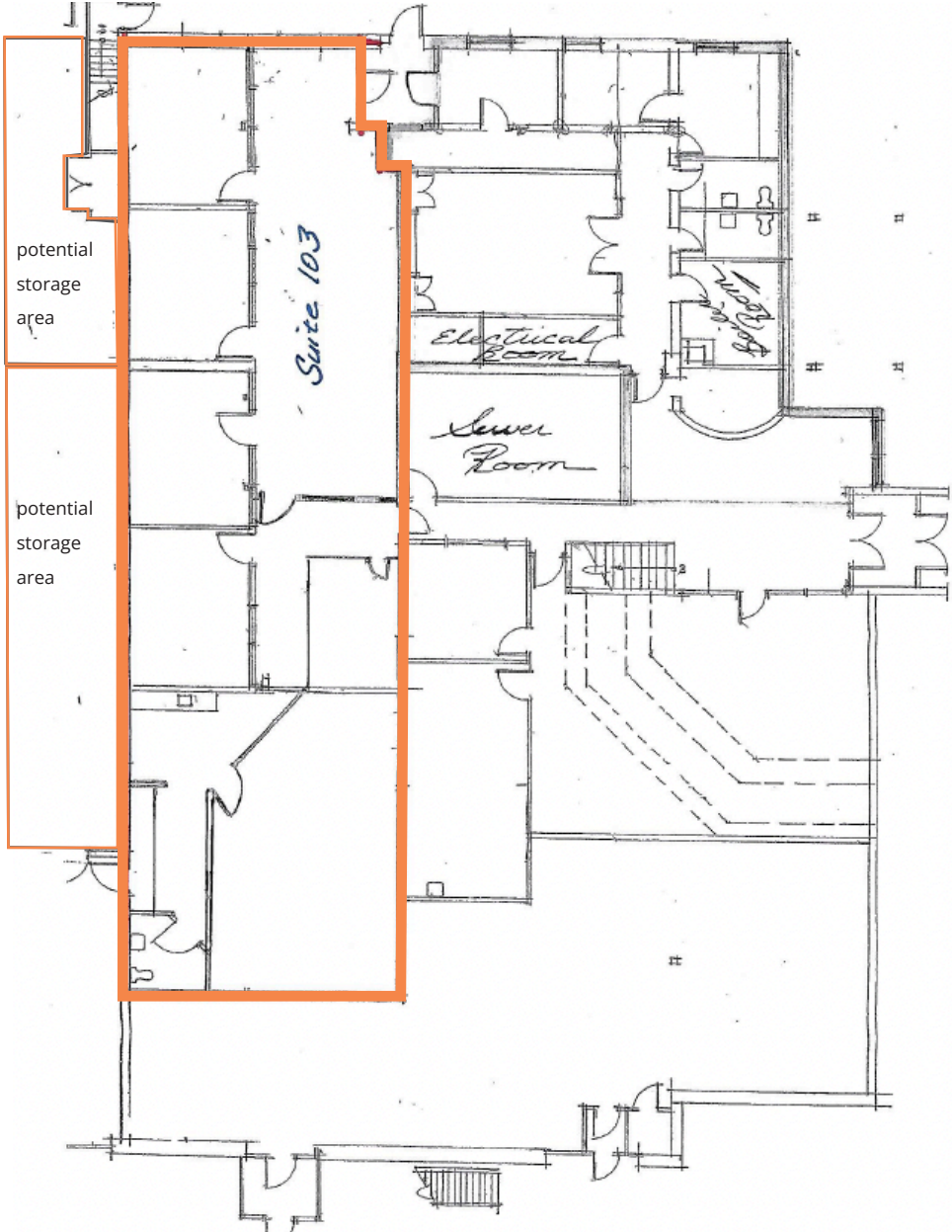
On-Site Parking Available

LISTING ID	10381
ADDRESS	190 Victoria Road
LOCATION	Dartmouth
PROPERTY TYPE	Office
BUILDING NAME	Keating Place
TOTAL NO. FLOORS	Two (2)
SIZE AVAILABLE	Ground floor: 3,500 sq. ft.
AVAILABILITY	Ground floor February 1, 2024
PARKING	On-site surface parking
BASE RENT	By negotiation (call a listing agent for details)
ADDITIONAL RENT	\$12.26 psf



KEATING PLACE, 190 VICTORIA ROAD | DARTMOUTH, NS

Ground Floor - 3,500 sq. ft.





PRIVATE OFFICE



KITCHEN



STORAGE



OPEN AREA / RECEPTION



PRIVATE OFFICE



- 1 Brightwood Golf & Country Club
- 2 Wendy's, Subway, McDonald's
- 3 Zatzman Sportsplex
- 4 Downtown Dartmouth
- 5 Mic Mac Mall



Geof Ralph

☎ (902) 444-4004
 📠 (902) 877-9324
 ✉ geof@partnersglobal.com

partnersglobal.com

Partners Global Corporate Real Estate (Partners Global) and its agents and affiliates do not warrant, represent or guarantee the accuracy, completeness or validity of the information provided herein. Parties interested in the property are to conduct their own independent investigations to determine the suitability of the property for their intended use and are strongly urged to discuss the property with their professional advisors. Partners Global expressly disclaims any liability arising out of any errors and omissions in the information. Prospective clients should not confine themselves to the contents but should make their own enquiries to satisfy themselves in all respects. Partners Global will not accept any responsibility should any details prove to be incomplete or incorrect.

