

FOR SUBLEASE

# THE MAITLAND TERRACE

## 2085 MAITLAND STREET, NORTH END HALIFAX

Unique 1,150 sq. ft. office sublease opportunity in North End Halifax



Geof Ralph

☎ (902) 444-4004

📠 (902) 877-9324

✉ geof@partnersglobal.com

[partnersglobal.com](http://partnersglobal.com)

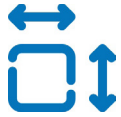




## Unique 1,150 sq. ft. office sublease opportunity in North End Halifax

Nestled between Gottingen Street and Brunswick Street, in vibrant North End Halifax, The Maitland Terrace stands as a four-storey heritage office building rich with character and charm. Just steps away from charming cafes, distinguished restaurants, trendy pubs, and a short walk to downtown Halifax, this area offers a vibrant atmosphere with alluring amenities.

The office sublease opportunity features +/- 1,150 sq. ft. on the second level. Brimming with character, it highlights original details and enjoys generous natural light. Enhanced by high ceilings, hardwood floors, and exposed brick, the space includes private offices, open workspace, and a washroom. Perfectly suited for a not-for-profit, law office, creative agency, or professional service company seeking a professional building with character in a thriving area.



1,150 sq. ft.  
Office Space

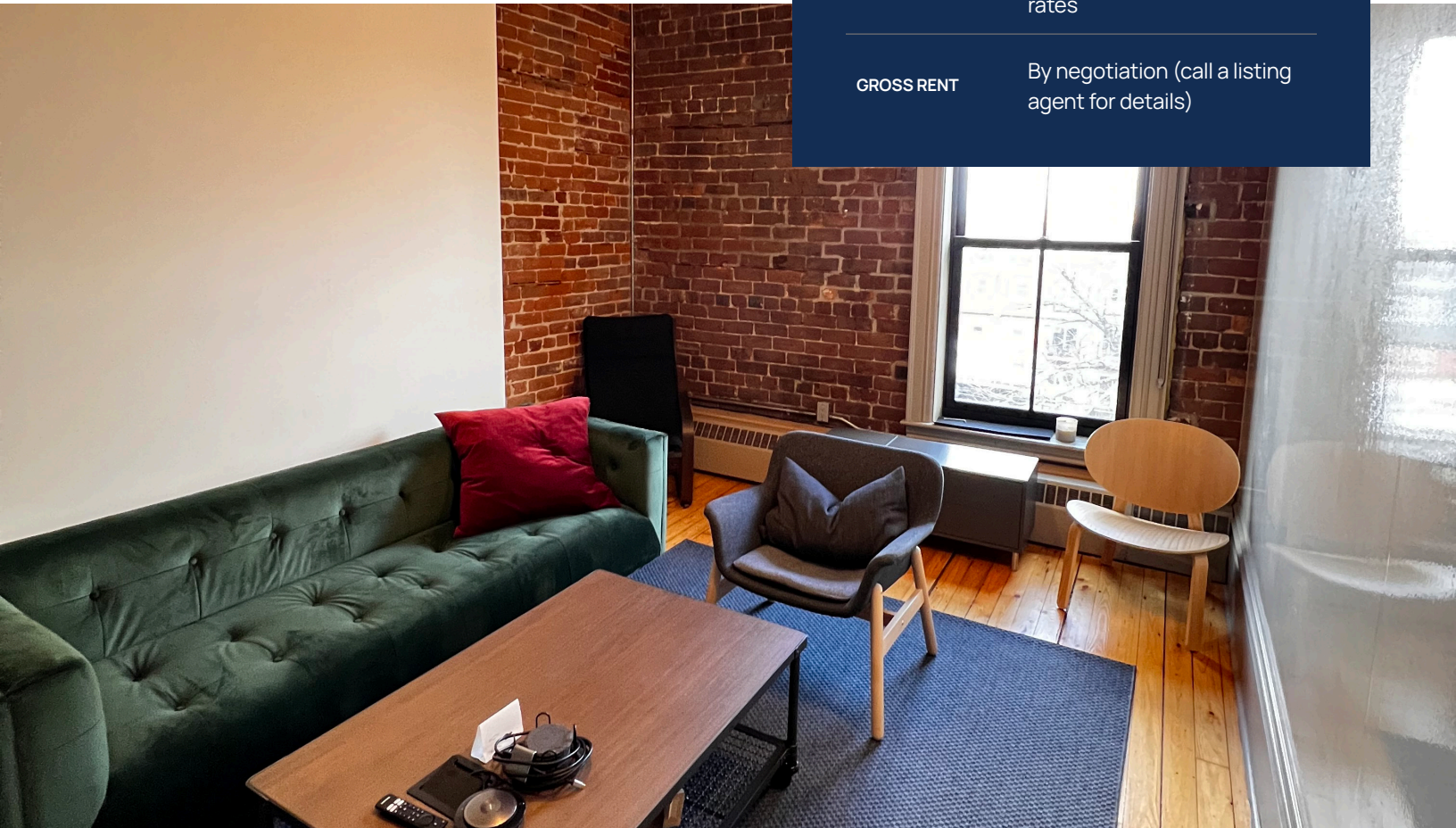


Central, Trendy  
Area



Parking  
Available

LISTING ID	10395
ADDRESS	2085 Maitland Street Suite 200
LOCATION	North End
PROPERTY TYPE	Office
BUILDING NAME	The Maitland Terrace
PROPERTY TYPE	Office
BUILDING SIZE	13,500 sq. ft.
SIZE AVAILABLE	+/- 1,150 sq. ft.
FLOOR LOCATION	Second level
AVAILABILITY	June 1, 2024
TERM	Maximum 24 month term
PARKING	Nearby parking at market rates
GROSS RENT	By negotiation (call a listing agent for details)





## Location Overview

### North End Halifax: Embrace vibrancy, ignite creativity, and explore endless possibilities

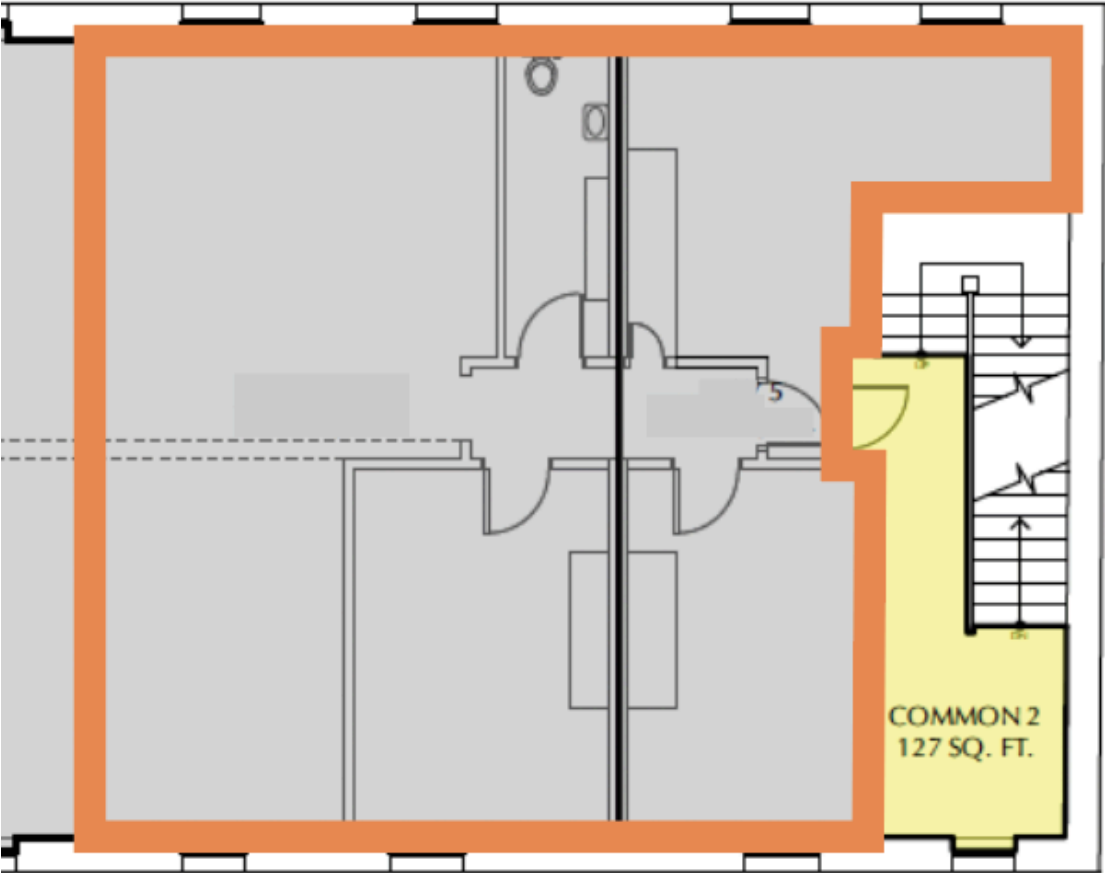
Situated at the cusp of the city's downtown, North End Halifax stands a vibrant and rapidly revitalizing neighborhood. Brimming with culture and creativity, this area is home to charming cafes, award-winning restaurants, trendy brewpubs, renowned bakeries, chic boutiques, welcoming fitness and yoga studios, and picturesque saltbox houses. Conveniently positioned, downtown Halifax is just a brief walk away, providing locals the opportunity to enjoy all the amenities it has to offer without the hassle of parking.

Anchored by a strong community spirit, North End Halifax offers not only excellent entertainment and events and a rich history, but also a seamless blend of modern vibrancy and historical charm. The area has witnessed substantial growth over the past decade and displays a continued momentum with no signs of slowing down. Uncover why North End Halifax is the city's best-kept secret for local and small organizations and join the thriving community of over 350 businesses in the North End Business Association that proudly call this dynamic area their home.



# Floor Plan

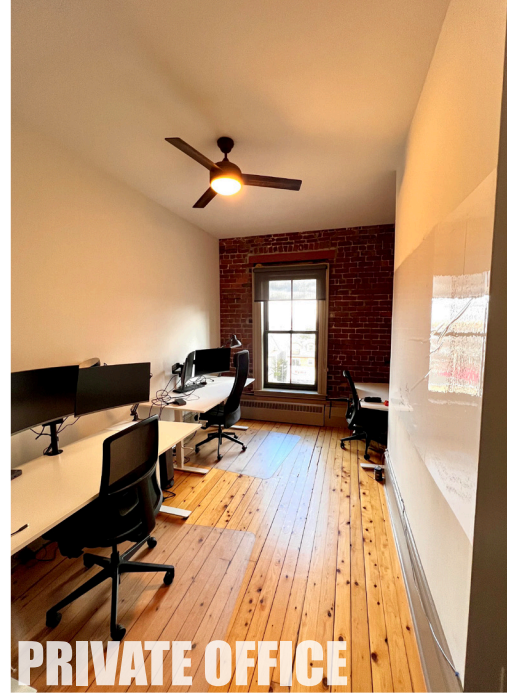
+/- 1,150 sq. ft.







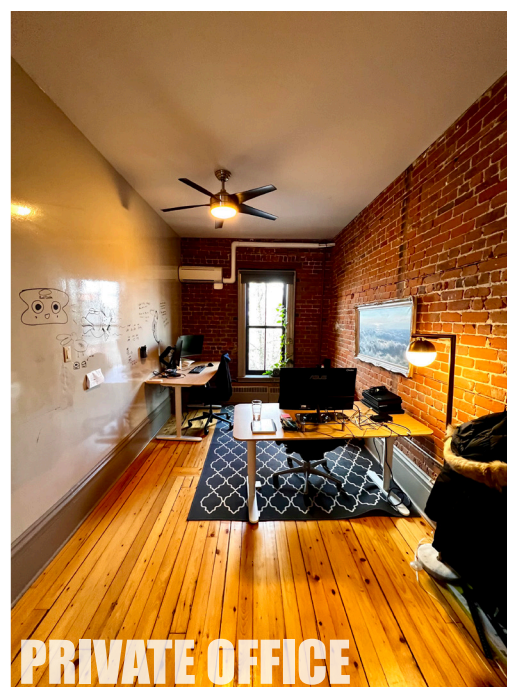
**OPEN WORKSPACE**



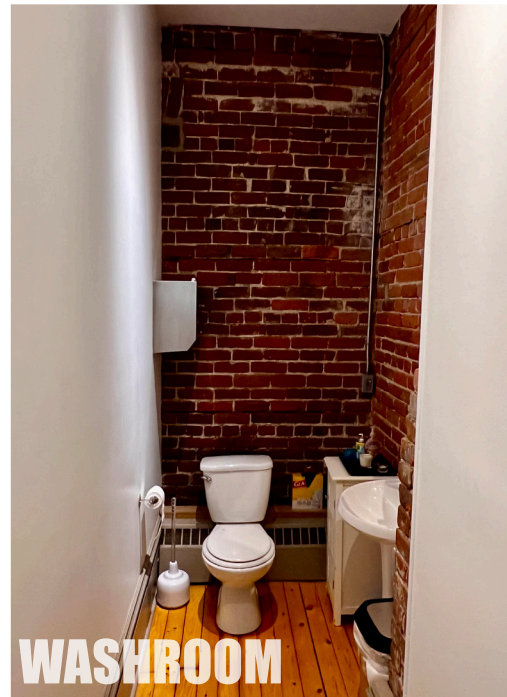
**PRIVATE OFFICE**



**PRIVATE OFFICE / COLLABORATIVE SPACE**



**PRIVATE OFFICE**



**WASHROOM**





**Geof Ralph**

- ☎ (902) 444-4004
- 📠 (902) 877-9324
- ✉ geof@partnersglobal.com

[partnersglobal.com](https://partnersglobal.com)

Partners Global Corporate Real Estate (Partners Global) and its agents and affiliates do not warrant, represent or guarantee the accuracy, completeness or validity of the information provided herein. Parties interested in the property are to conduct their own independent investigations to determine the suitability of the property for their intended use and are strongly urged to discuss the property with their professional advisors. Partners Global expressly disclaims any liability arising out of any errors and omissions in the information. Prospective clients should not confine themselves to the contents but should make their own enquiries to satisfy themselves in all respects. Partners Global will not accept any responsibility should any details prove to be incomplete or incorrect.

