

SUBLEASE



SUITE 215, PARK PLACE III 237 BROWNLOW AVENUE, DARTMOUTH

Fully-Furnished Office Sublet in the City of Lakes Business Park

- 3,240 sf of space on the second floor
- Convenient and easily accessible location
- Option to include all existing furniture

This stylish and bright office space located in the City of Lakes Business Park offers 3,240 square feet, comprised of a reception area, kitchenette, open and enclosed meeting spaces, boardroom, workstation space, and storage. Features include elevator access, ample on-site surface parking, plenty of natural light, and the option to include all existing furniture.

Building amenities at Park Place III include a modern atrium lobby with free Wi-Fi and collaborative space, a coffee shop, and bike racks. In addition, tenants of Park Place's Corporate Campus have access to the amenities at the nearby Delta Hotel by Marriott Dartmouth, including its fitness centre and meeting spaces.

partnersglobal.com

FOR LEASE

\$20.00 psf (gross)

Geof Ralph

D (902) 444-3006

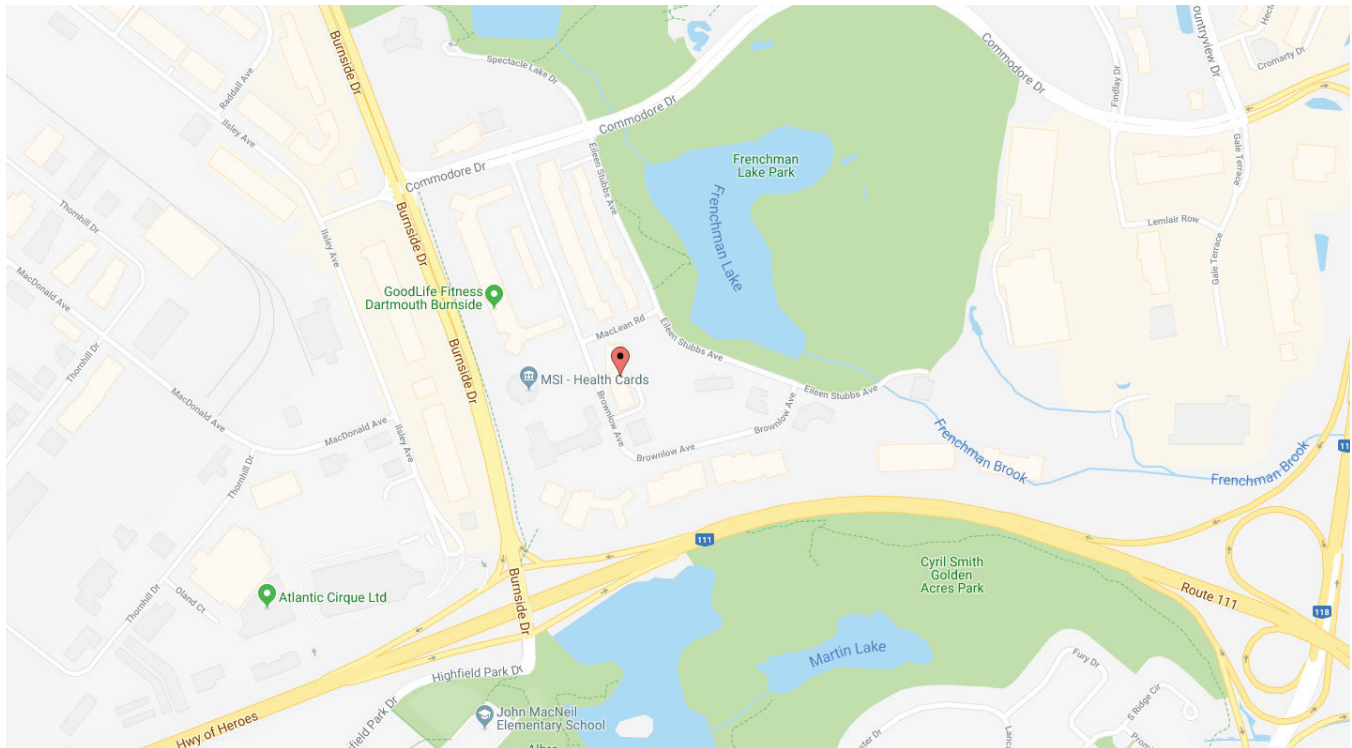
M (902) 877-9324

geof@partnersglobal.com



PARTNERS GLOBAL
CORPORATE REAL ESTATE

Suite 215, Park Place III | 237 Brownlow Avenue, Dartmouth



LISTING ID	10188
BUILDING NAME	Park Place III
ADDRESS	Suite 215, 237 Brownlow Avenue, Dartmouth, Nova Scotia
LOCATION	City of Lakes Business Park
TOTAL BUILDING SIZE	75,830 sf
SIZE AVAILABLE	3,240 sf
FLOOR LOCATION	2 of 2
PARKING	12 surface stalls
GROSS RENT	\$20.00 psf
HEAD LEASE EXPIRY	September 30, 2023
ADDITIONAL NOTES	Option to include all furniture

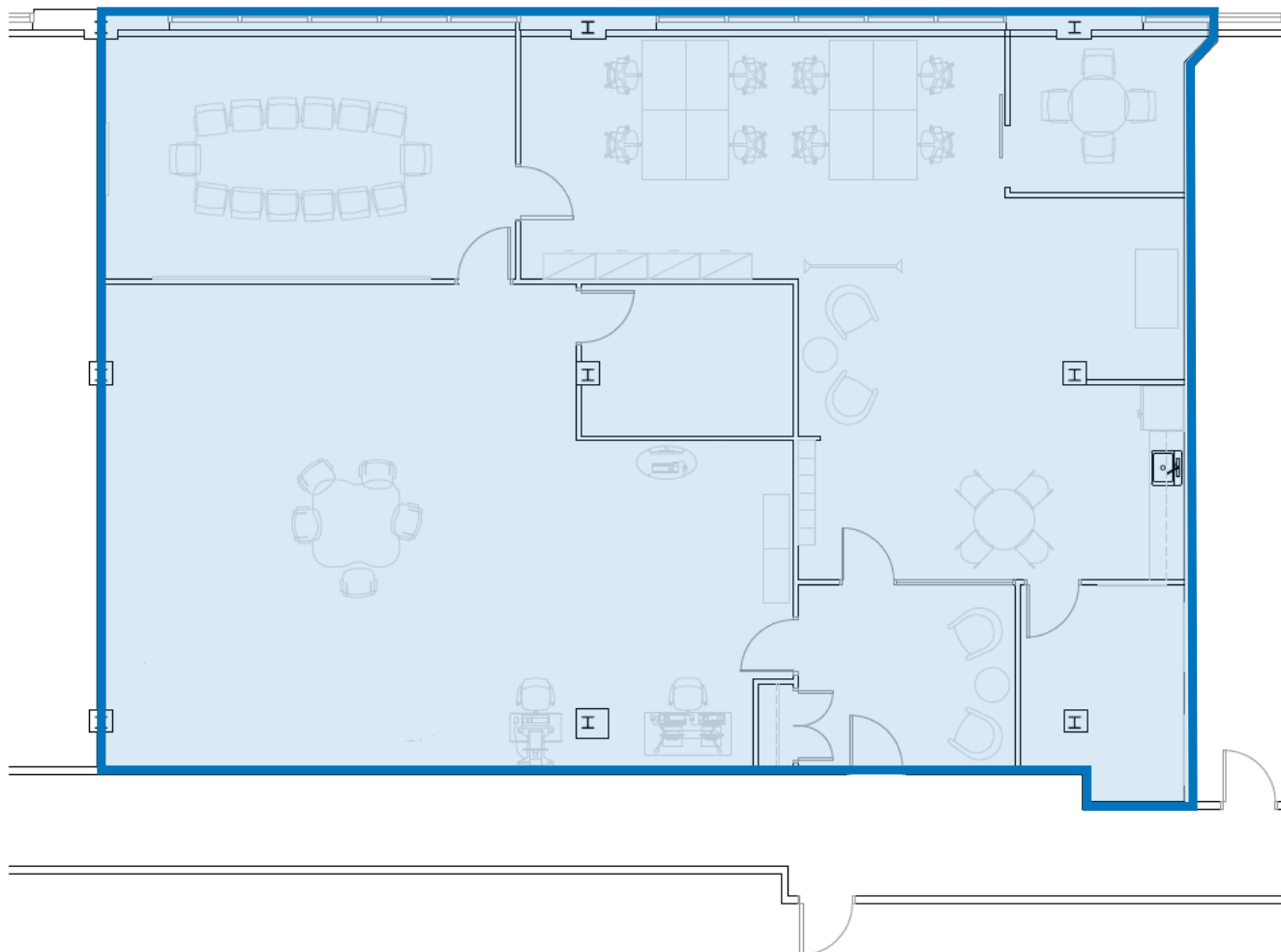
Suite 215, Park Place III | 237 Brownlow Avenue, Dartmouth

SUITE PHOTOS



Suite 215, Park Place III | 237 Brownlow Avenue, Dartmouth

FLOOR PLAN



Partners Global Corporate Real Estate (Partners Global) and its agents and affiliates do not warrant, represent or guarantee the accuracy, completeness or validity of the information provided herein. Parties interested in the property are to conduct their own independent investigations to determine the suitability of the property for their intended use and are strongly urged to discuss the property with their professional advisors. Partners Global expressly disclaims any liability arising out of any errors and omissions in the information. Prospective clients should not confine themselves to the contents but should make their own enquiries to satisfy themselves in all respects. Partners Global will not accept any responsibility should any details prove to be incomplete or incorrect.