

NEWFOUNDLAND & LABRADOR

MONTHLY LISTING REPORT

April 2020

Partners Global Corporate Real Estate
1 Church Hill, Suite 201, St. John's, NL
P 709.793.0004 | stjohns@partnersglobal.com

partnersglobal.com



FEATURED LISTINGS

Click the property photos for more information

FOR SALE | INDUSTRIAL

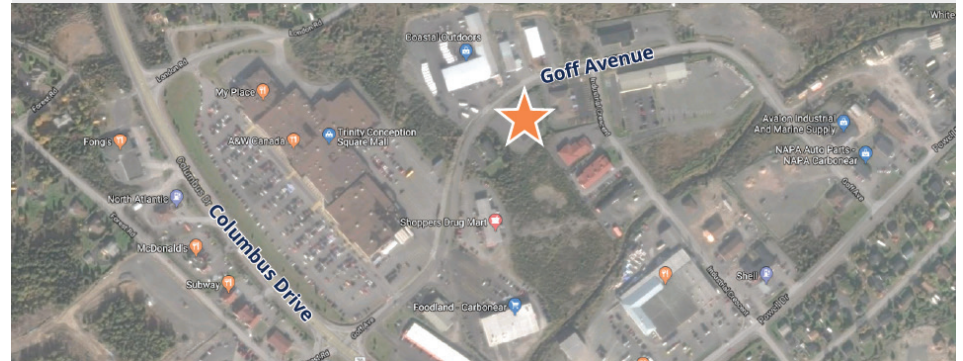
1 Southern Cross Road, Mount Pearl



Size	36,319 sf
Price	\$7,000,000
Features	<ul style="list-style-type: none"> • Standout single tenant investment opportunity in Donovans Business Park • Well-maintained light industrial building set on 3.5 acres • 100% occupied by a federal government tenant
Contact(s)	Connie Amero

REDUCED | FOR SALE | COMMERCIAL

22 Goff Avenue, Carbonear



Size	5,000 sf
Price	\$550,000
Features	<ul style="list-style-type: none"> • Opportunity to own and earn income • Professional office building partially tenanted by a government tenant and offers the potential to expand • Located in Carbonear Industrial Park, just off Columbus Drive near Trinity Square Mall
Contact(s)	Connie Amero

FEATURED LISTINGS

Click the property photos for more information

UNDER OFFER | FOR SALE | COMM.

10-12 North Street, St. Anthony



Size	2,400 sf
Price	\$90,000
Features	<ul style="list-style-type: none"> • Ideal commercial owner-occupier opportunity • Centrally located along the town's commercial corridor • Single-storey standalone building, set on a corner lot • Open-concept interior • Could accommodate many different uses
Contact(s)	Connie Amero

FOR SALE | REDEVELOPMENT

400 Topsail Road, St. John's



Size	2.32 acres
Price	\$2,400,000
Features	<ul style="list-style-type: none"> • Opportunity for redevelopment across from The Village Shopping Centre • Site currently improved with a +/- 40,000 sf building, comprised predominantly of warehouse space • Flexible zoning permits a variety of comm. / retail uses
Contact(s)	Connie Amero



CONTACT US

Paul Moore, *Principal & Broker*

D 506.648.3520

M 506.645.8488

paul@partnersglobal.com

Connie Amero, *Managing Director*

D 902.431.9967

M 902.802.8480

mona@partnersglobal.com

Jacquelyn Moriarty, *Sales & Marketing Coordinator*

D 902.444.4004

M 902.440.3937

jacquelyn@partnersglobal.com

Partners Global Corporate Real Estate (Partners Global) and its agents and affiliates do not warrant, represent or guarantee the accuracy, completeness or validity of the information provided herein. Parties interested in the property are to conduct their own independent investigations to determine the suitability of the property for their intended use and are strongly urged to discuss the property with their professional advisors. Partners Global expressly disclaims any liability arising out of any errors and omissions in the information. Prospective clients should not confine themselves to the contents but should make their own enquiries to satisfy themselves in all respects. Partners Global will not accept any responsibility should any details prove to be incomplete or incorrect.

partnersglobal.com

