

# FREDERICTON NEW BRUNSWICK

## MONTHLY LISTING REPORT

---

May 2020

Partners Global Corporate Real Estate  
364 York Street, Suite 205, Fredericton, NB  
P (506) 453-7880 | [fredericton@partnersglobal.com](mailto:fredericton@partnersglobal.com)

[partnersglobal.com](https://partnersglobal.com)





# FEATURED LISTINGS

Click the property photos for more information

## NEW | FOR SALE | INVESTMENT

411 Saint Mary's Street, Fredericton



Size	12 units
Price	\$1,450,000 + HST
Features	<ul style="list-style-type: none"> <li>Fully-occupied two-storey mixed-use investment opportunity within city limits</li> <li>Newer construction with great curb appeal</li> <li>Four (4) commercial tenancies on the ground floor and eight (8) one-bedroom apartments above</li> </ul>
Contact(s)	Mark LeBlanc

## FOR LEASE | INDUSTRIAL

385 Wilsey Road, Fredericton



Size	3,750 sf
Price	\$6.50 psf (net)
Features	<ul style="list-style-type: none"> <li>Versatile commercial space in Fredericton Industrial Park strip plaza</li> <li>Offers easy access to the Vanier and Trans Canada Highways and good exposure for exterior signage</li> <li>Ideal for industrial, office or retail purposes</li> </ul>
Contact(s)	Mark LeBlanc

# FOR LEASE | ALL TYPES

Click the property photos for more information

**INDUSTRIAL!**


<b>Address</b>	125 Whiting Road, Fredericton
<b>Size</b>	Unit 2A: 2,891 sf
<b>Price</b>	\$12.50 psf (gross)
<b>Details</b>	Move-in ready office / warehouse space in Fredericton Industrial Park available now; high-quality space with Business Industrial (BI) zoning
<b>Contact(s)</b>	Mark LeBlanc

**INDUSTRIAL!**


<b>Address</b>	230 Hodgson Road, Fredericton
<b>Size</b>	3,200 sf
<b>Price</b>	\$9.50 psf (semi-gross)
<b>Details</b>	One availability at this multi-tenant building near Vanier Industrial Park; location offers great access and exposure; 22' clear heights and grade level loading
<b>Contact(s)</b>	Mark LeBlanc

**BUILD-TO-SUIT!**


<b>Address</b>	160 Alison Boulevard, Fredericton
<b>Size</b>	3.83 acres
<b>Price</b>	By negotiation (contact the listing agent)
<b>Details</b>	Build-to-suit land development opportunity; available for single- or multiple-tenant occupancy; location offers easy access to highway and downtown
<b>Contact(s)</b>	Mark LeBlanc

**COMMERCIAL!**


<b>Address</b>	385 Wilsey Road, Fredericton
<b>Size</b>	3,750 sf
<b>Price</b>	\$6.50 psf (net)
<b>Details</b>	Flexible space for industrial, office or retail purposes in Fredericton Industrial Park; well-maintained building, with 22' ceiling height and on-site parking
<b>Contact(s)</b>	Mark LeBlanc

**BUILD-TO-SUIT!**


<b>Address</b>	311 Doak Road, Fredericton
<b>Size</b>	+/- 4.75 acres
<b>Price</b>	By negotiation (contact the listing agent)
<b>Details</b>	Prime commercial land available for development; build-to-suit opportunity; corner property with direct access to Trans-Canada Hwy
<b>Contact(s)</b>	Mark LeBlanc

**LAND LEASE!**


<b>Address</b>	Knowledge Park Drive, Fredericton
<b>Size</b>	18+ acres
<b>Price</b>	By negotiation (contact the listing agent)
<b>Details</b>	Premier retail, commercial and residential development site; Knowledge park commercial node is already home to Costco, Home Depot, Winners and more
<b>Contact(s)</b>	Mark LeBlanc

**SUBLEASE!**


<b>Address</b>	214-218 Brunswick Street, Fredericton
<b>Size</b>	Unit 202: 1,794 sf
<b>Price</b>	By negotiation (contact the listing agent)
<b>Details</b>	Highly functional, modern sublease space near downtown in mixed-use building; some on-site parking available; elevator access and ample natural light
<b>Contact(s)</b>	Mark LeBlanc



# FOR SALE | ALL TYPES

Click the property photos for more information



<b>Address</b>	411 Saint Mary's Street, Fredericton
<b>Size</b>	4 commercial + 8 residential units
<b>Price</b>	\$1,450,000 + HST
<b>Details</b>	Rare mixed-use investment opportunity within city limits; ground floor commercial with walk-up residential above; built in 2012; 100% occupied
<b>Contact(s)</b>	Mark LeBlanc



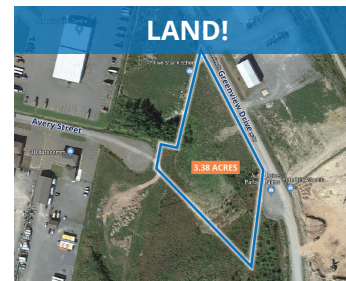
<b>Address</b>	490 Hodgson Road, Fredericton
<b>Size</b>	9,423 sf
<b>Price</b>	\$1,200,000
<b>Details</b>	Rare owner-occupier opportunity; 9,400+ sf set on close to 4.00 acres; fully-fenced facility with great access; offers additional development potential
<b>Contact(s)</b>	Mark LeBlanc



<b>Address</b>	1475 & 1489 Woodstock, Fredericton
<b>Size</b>	+/- 11,442 rsf
<b>Price</b>	\$1,125,000
<b>Details</b>	Unique package opportunity - commercial building with surplus land; set on +/- 1.37 acres; combination of office, shop space and excess land
<b>Contact(s)</b>	Mark LeBlanc



<b>Address</b>	642-652 Union Street, Fredericton
<b>Size</b>	16,297 sf
<b>Price</b>	\$160,000
<b>Details</b>	Vacant land on the northside with approved development agreement in place for mixed-use building; shovel-ready site in great location
<b>Contact(s)</b>	Mark LeBlanc



<b>Address</b>	Greenview Drive, Hanwell
<b>Size</b>	3.38 acres
<b>Price</b>	\$389,500
<b>Details</b>	High-profile commercial land in Hanwell Industrial Park; well-shaped with great visibility and exposure to the Trans-Canada Highway
<b>Contact(s)</b>	Mark LeBlanc



<b>Address</b>	91 Timothy Avenue South, Hanwell
<b>Size</b>	9,077 sf, set on 5.97 acres
<b>Price</b>	\$1,100,000
<b>Details</b>	Two parcels totalling 2.41 hectares; 9,000+ sf industrial building plus adjacent vacant land, suitable for development; zoned Industrial (I)
<b>Contact(s)</b>	Mark LeBlanc & Steve Morrison



<b>Address</b>	Reynolds Street, Fredericton
<b>Size</b>	+/- 55 acres
<b>Price</b>	\$1,650,000
<b>Details</b>	Prime residential development with access to full city services; zoning is a combination of R-2, R-3 and R-5
<b>Contact(s)</b>	Stephanie Turner (506.333.3442; <a href="mailto:stephanie@partnersglobal.com">stephanie@partnersglobal.com</a> )



# CONTACT US

**Mark LeBlanc, Principal & Broker**

**D** 506.453.1119

**M** 506.260.7203

mark@partnersglobal.com

**Mona Cockburn, Office Administrator**

**D** 506.453.0067

mona@partnersglobal.com

**Jacquelyn Moriarty, Sales & Marketing Coordinator**

**D** 902.444.4004

**M** 902.440.3937

jacquelyn@partnersglobal.com

*Partners Global Corporate Real Estate (Partners Global) and its agents and affiliates do not warrant, represent or guarantee the accuracy, completeness or validity of the information provided herein. Parties interested in the property are to conduct their own independent investigations to determine the suitability of the property for their intended use and are strongly urged to discuss the property with their professional advisors. Partners Global expressly disclaims any liability arising out of any errors and omissions in the information. Prospective clients should not confine themselves to the contents but should make their own enquiries to satisfy themselves in all respects. Partners Global will not accept any responsibility should any details prove to be incomplete or incorrect.*

[partnersglobal.com](http://partnersglobal.com)

