



# THE MEWS, 2111 MAITLAND STREET NORTH END, HALIFAX

## Architecturally Designed Loft Near the Edge of Downtown

- 1,842 sf on the top floor available soon
- Open concept space improved to a high standard
- Some paid on-site parking

Nestled between Gottingen and Brunswick Streets in the North End of Halifax, The Mews is a stunning live-work, loft-style building designed by Dan Goodspeed of architects Kassner Goodspeed. Neighbouring tenants include Brickyard Health, Sparrow Hair Studio and Thinkwell Research.

This rare and unique availability features elevator access directly into the space, a fireplace with floor to ceiling tile backdrop, hardwood floors, kitchenette, private washroom, balcony with water views, heat pumps for primary heating and cooling, over 13' clear heights at the center, and much more.

[partnersglobal.com](https://partnersglobal.com)

## FOR LEASE

By negotiation

### Connie Amero

D 902.431.9967

M 902.802.8480

[connie@partnersglobal.com](mailto:connie@partnersglobal.com)

### Geof Ralph

D 902.444.3006

M 902.877.9324

[geof@partnersglobal.com](mailto:geof@partnersglobal.com)



## The Mews, 2111 Maitland Street | North End, Halifax

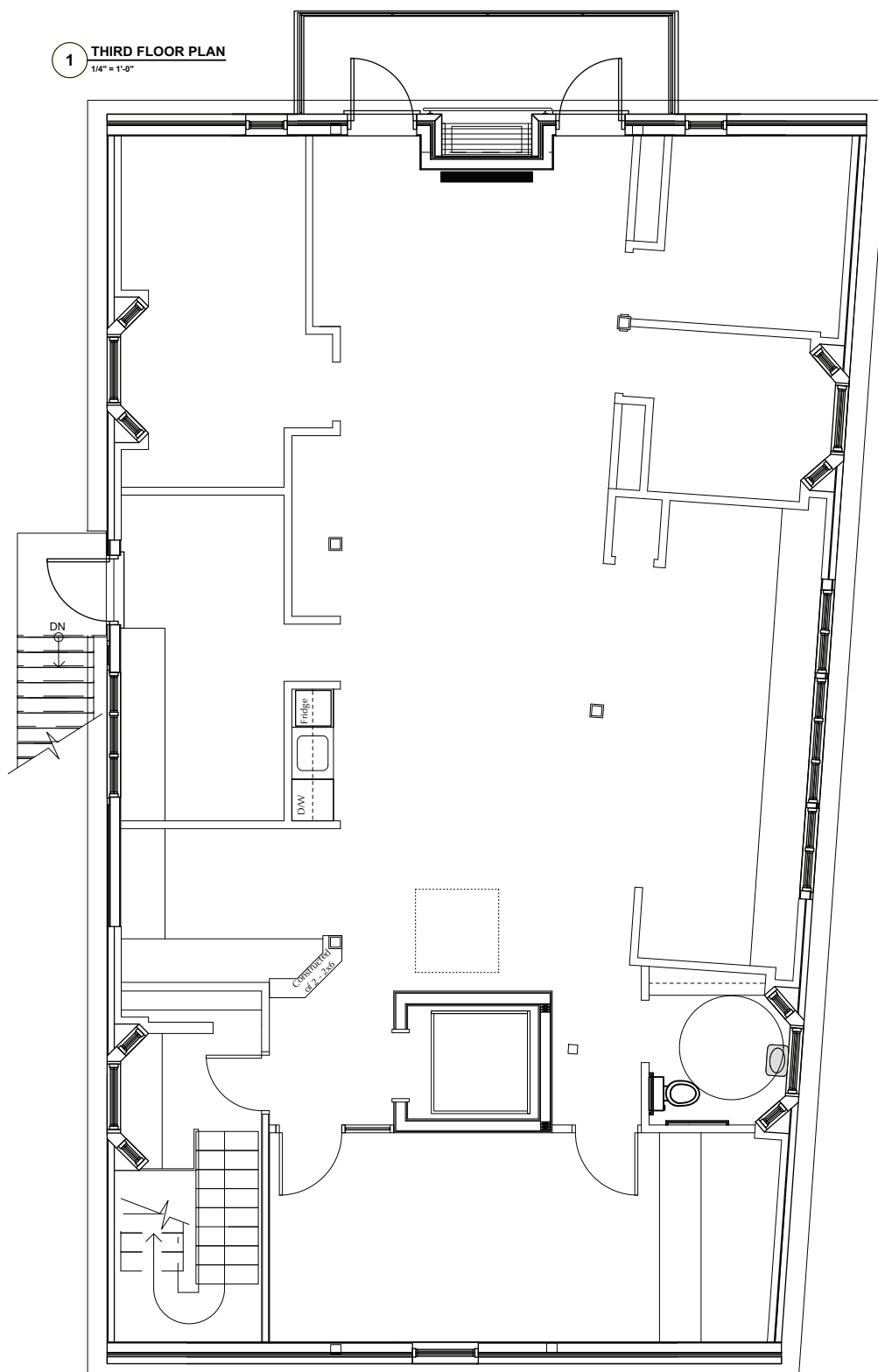


<b>LISTING ID</b>	10222
<b>ADDRESS</b>	2111 Maitland Street
<b>LOCATION</b>	North End
<b>PROPERTY TYPE</b>	Commercial and/or residential lofts
<b>BUILDING NAME</b>	The Mews
<b>BUILDING SIZE</b>	5,630 sf
<b>SIZE AVAILABLE</b>	1,842 sf
<b>FLOOR LOCATION</b>	3 <sup>rd</sup> (top level)
<b>AVAILABILITY</b>	October 2020
<b>PARKING</b>	Paid covered underground and surface parking
<b>GROSS RENT</b>	By negotiation (call a listing agent for details)



# The Mews, 2111 Maitland Street | North End, Halifax

## FLOOR PLAN







- Open floor plan with 7 columns
- 3 Scottish dormers and 2 shed dormers
- Heat pump for primary heating and cooling
- Fireplace with East Hants tile slate wall
- Cape Breton yellow birch hardwood floor
- 5'x18' galvanized metal balcony with 2 doors
- 19 triple-glazed windows, various sizes
- Elevator (accessibility lift) opens directly into unit
- 13'3" ceiling height at center of unit





**Connie Amero**

**D** 902.431.9967

**M** 902.802.8480

[connie@partnersglobal.com](mailto:connie@partnersglobal.com)

**Geof Ralph**

**D** 902.444.3006

**M** 902.877.9324

[geof@partnersglobal.com](mailto:geof@partnersglobal.com)

Partners Global Corporate Real Estate (Partners Global) and its agents and affiliates do not warrant, represent or guarantee the accuracy, completeness or validity of the information provided herein. Parties interested in the property are to conduct their own independent investigations to determine the suitability of the property for their intended use and are strongly urged to discuss the property with their professional advisors. Partners Global expressly disclaims any liability arising out of any errors and omissions in the information. Prospective clients should not confine themselves to the contents but should make their own enquiries to satisfy themselves in all respects. Partners Global will not accept any responsibility should any details prove to be incomplete or incorrect.

[partnersglobal.com](http://partnersglobal.com)

