

TENANT AND BROKER INCENTIVES!

SEE THE NEXT PAGE
FOR DETAILS*

High-Visibility Signage Opportunities!



UNIT 1, PARKWAY PLACE 250 BROWNLOW AVENUE, DARTMOUTH

Quality Commercial Space in City of Lakes Business Park

- 5,424 sf of rentable area
- Free on-site parking
- **Tenant AND broker incentives!**

This opportunity includes 5,424 sf of ground floor and mezzanine space at Parkway Place. Unit 1 is move-in ready, fully built-out with several private offices, a boardroom, kitchen, reception area, and washrooms. The mezzanine level comprises open workstation space and additional offices along its perimeter.

Well-located in the City of Lakes Business Park, Parkway Place is a mixed-use, professional office and commercial building overlooking the Circumferential Highway (NS Highway 111). The building benefits from an abundance of exposure, is easily accessible for all kinds of commuters, and sits adjacent to the Delta Hotels by Marriott Dartmouth.

partnersglobal.com

FOR LEASE

\$10.00 psf \$9.00 psf (net)

Connie Amero

D (902) 431-9967

M (902) 802-8480

connie@partnersglobal.com

Geof Ralph

D (902) 444-3006

M (902) 877-9324

geof@partnersglobal.com



Unit 1, Parkway Place | 250 Brownlow Avenue, Dartmouth

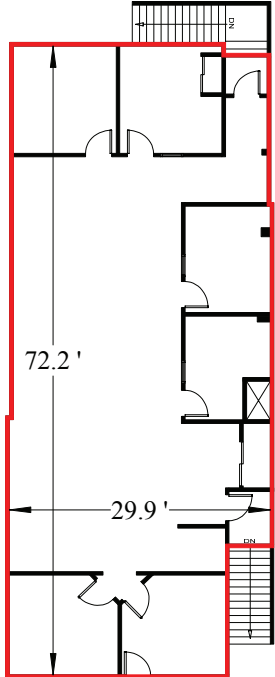


LISTING ID	10209						
ADDRESS	Unit 1, 250 Brownlow Avenue, Dartmouth, Nova Scotia						
LOCATION	City of Lakes Business Park						
ZONING	General Industrial (I-2) Zone						
BUILDING SIZE	54,398 sf						
SIZE AVAILABLE	<table border="0"> <tr> <td>Ground Floor</td> <td>3,004 sf</td> </tr> <tr> <td>Mezzanine</td> <td>2,420 sf</td> </tr> <tr> <td>Total</td> <td>5,424 sf</td> </tr> </table>	Ground Floor	3,004 sf	Mezzanine	2,420 sf	Total	5,424 sf
Ground Floor	3,004 sf						
Mezzanine	2,420 sf						
Total	5,424 sf						
PARKING	Ample paved surface stalls (free)						
AVAILABILITY	Immediately						
BASE RENT	\$10.00 psf \$9.00 psf (net)						
CAM & REALTY TAXES	Estimated at \$7.20 psf for 2020 (charged on the ground floor area only)						
*BROKER INCENTIVE DETAILS	\$2,000 gift card of the agent's choice. For a binding offer completed prior to February 28, 2021 (minimum five-year term)						
*TENANT INCENTIVE DETAILS	Six (6) months net rent free						
VIRTUAL TOUR	Click here						

Unit 1, Parkway Place | 250 Brownlow Avenue, Dartmouth, NS

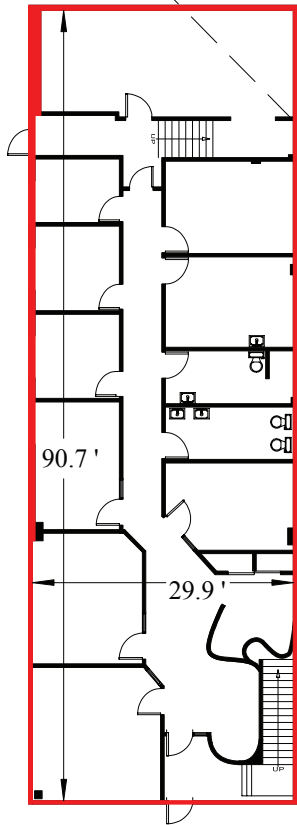
FLOOR PLAN & PHOTOS

Unit #1 Mezzanine
Rentable Area: 2,420 ft.²



[Click Here for a Virtual Tour!](#)

Unit #1
Rentable Area: 3,004 ft.²





For more information please contact:

Connie Amero

D (902) 431-9967

M (902) 802-8480

connie@partnersglobal.com

Geof Ralph

D (902) 444-3006

M (902) 877-9324

geof@partnersglobal.com

Partners Global Corporate Real Estate (Partners Global) and its agents and affiliates do not warrant, represent or guarantee the accuracy, completeness or validity of the information provided herein. Parties interested in the property are to conduct their own independent investigations to determine the suitability of the property for their intended use and are strongly urged to discuss the property with their professional advisors. Partners Global expressly disclaims any liability arising out of any errors and omissions in the information. Prospective clients should not confine themselves to the contents but should make their own enquiries to satisfy themselves in all respects. Partners Global will not accept any responsibility should any details prove to be incomplete or incorrect.

partnersglobal.com

