



SUITE 200, 939 MAIN STREET MONCTON, NEW BRUNSWICK

Move-in Ready, Modern Office Space in High-Growth West End

- 9,000 square feet of plug-and-play space
- Paved surface parking available
- Efficient suite layout

This opportunity represents professional office space situated in the high-growth, west end neighbourhood of downtown Moncton, ideally located just across from the new Hyatt Place Moncton and a few steps from the beautiful Avenir Centre.

The second floor suite offers a fantastic combination of open concept and well-appointed offices and meeting rooms. Glass demising walls and sidelights result in an abundance of natural light. Other features include paved surface parking at a nearby lot, in-suite bathrooms, and the option to include all remaining furniture. Previously home to Brunswick News, your staff and clients will be proud to call this space home.

partnersglobal.com

FOR LEASE

\$14.50 psf (net)

Mark LeBlanc

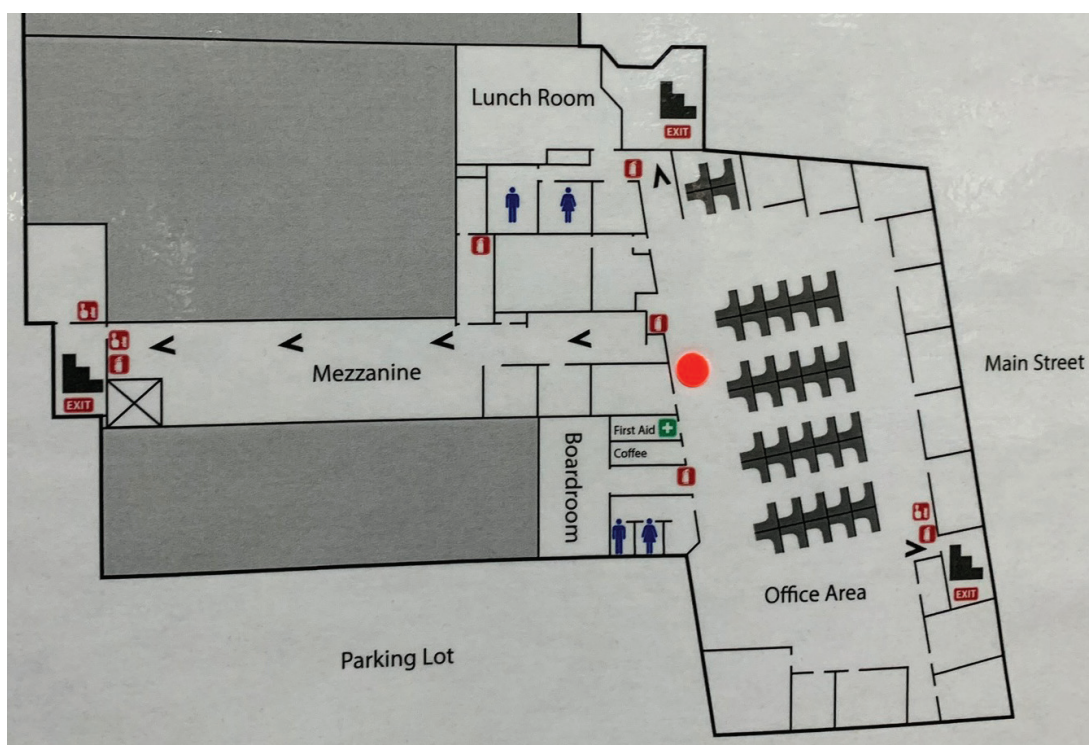
D (506) 260-7203

M (506) 453-1119

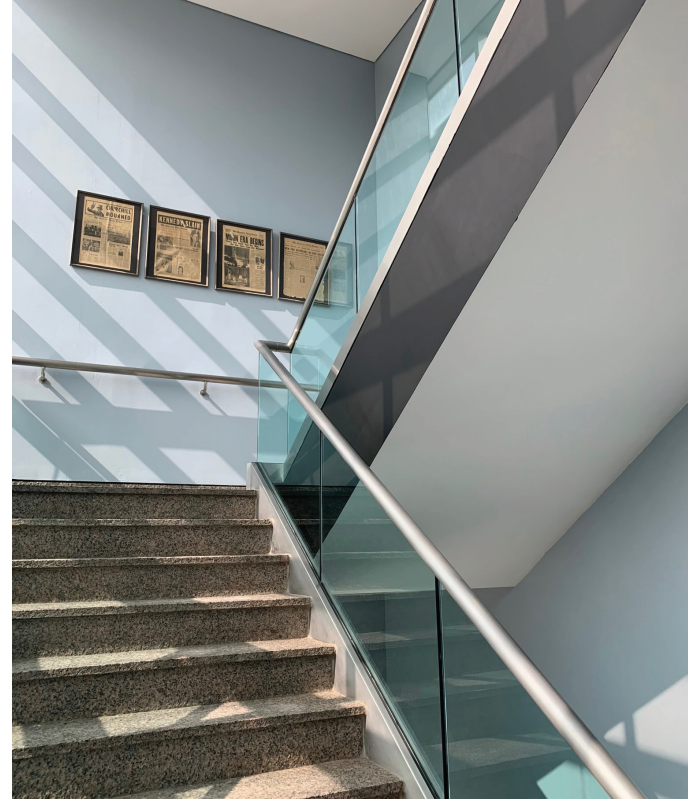
mark@partnersglobal.com

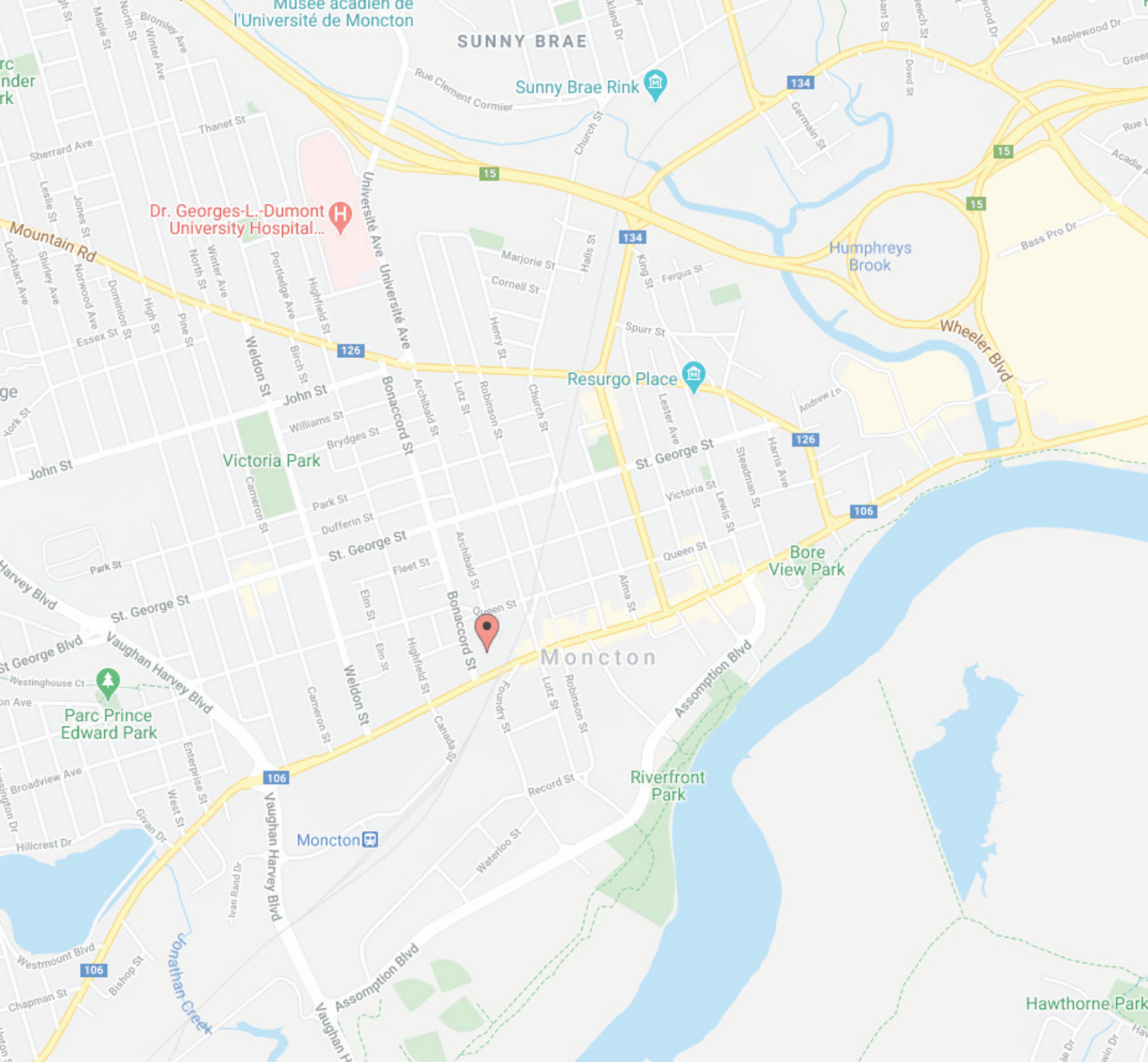


Suite 200, 939 Main Street | Moncton, New Brunswick



LISTING ID	25160
ADDRESS	939 Main Street, Moncton, New Brunswick
BUILDING NAME	Moncton Times & Transcript
BUILDING SIZE	+/- 50,000 sf
TOTAL NO. FLOORS	Two (2) of 2
SIZE AVAILABLE	Suite 200: 9,000 rsf
FLOOR LOCATION	Second
PARKING	Paved surface parking available
AVAILABILITY	Immediately
BASE RENT	\$14.50 psf
ADDITIONAL RENT	\$11.50 psf (2021 estimate)
LEASE TERM	Minimum 3 years
ADDITIONAL NOTES	Remaining furniture is negotiable (call the listing agent for more details)





For more information please contact:

Mark LeBlanc
P (506) 260-7203
M (506) 453-1119
mark@partnersglobal.com

Partners Global Corporate Real Estate (Partners Global) and its agents and affiliates do not warrant, represent or guarantee the accuracy, completeness or validity of the information provided herein. Parties interested in the property are to conduct their own independent investigations to determine the suitability of the property for their intended use and are strongly urged to discuss the property with their professional advisors. Partners Global expressly disclaims any liability arising out of any errors and omissions in the information. Prospective clients should not confine themselves to the contents but should make their own enquiries to satisfy themselves in all respects. Partners Global will not accept any responsibility should any details prove to be incomplete or incorrect.

partnersglobal.com

