



NOVA SCOTIA LISTING REPORT

DECEMBER 2020

Partners Global Corporate Real Estate Inc.
1801 Hollis Street, Suite 1420, Halifax, NS
P (902) 444-4004 | halifax@partnersglobal.com

partnersglobal.com



FEATURED LISTINGS

Click the property photos for more information

NEW | FOR SUBLEASE

SUITE 2210, 1801 HOLLIS STREET, HALIFAX



Size	Suite 2210: +/- 3,500 rsf
Price	Contact the listing agent
Features	<ul style="list-style-type: none"> • Top floor corner office sublease with impressive city views • Primely situated at the intersection of Duke & Hollis Streets • Suitable to a wide variety of office users • Remaining furniture is negotiable • Available immediately
Contact(s)	Erin Crosby

NEW | FOR LEASE

2050 GOTTINGEN STREET, HALIFAX



Size	1,550 sf
Price	Contact a listing agent
Features	<ul style="list-style-type: none"> • Brand new street-level corner space in the trendy North End • Ideally suited to food service use • Opportunity for a four-season rooftop patio plus street-side terrace in the warmer months • Tenancy fit-up scheduled for Spring 2021
Contact(s)	Geof Ralph & Connie Amero

NEW | FOR LEASE

2172 GOTTINGEN STREET, HALIFAX



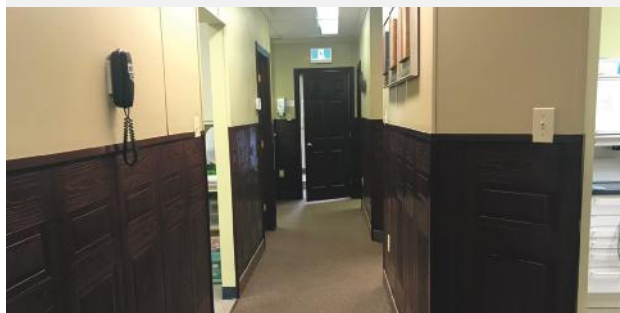
Size	1,285 sf
Price	Contact a listing agent
Features	<ul style="list-style-type: none"> • High-profile ground floor space, ideally suited to restaurant / food service use • Excellent exposure along a bustling North End corridor. • Opportunity for a three-season rooftop patio • Available immediately
Contact(s)	Geof Ralph & Connie Amero

FEATURED LISTINGS

Click the property photos for more information

NEW | FOR LEASE

380 PLEASANT STREET, DARTMOUTH



Size	Unit 4: 1,295 sf
Price	\$12.00 psf (net)
Features	<ul style="list-style-type: none"> • Small commercial tenancy with big frontage and exposure • Ample surface parking for clients and employees • Situated at the end of Highway 111 adjacent to the Woodside Ferry Terminal • Available now
Contact(s)	Connie Amero

NEW | FOR SALE

6319-6321 PEPPERELL STREET, HALIFAX



Size	18 rooms
Price	\$1,750,000 (5.16% Cap Rate)
Features	<ul style="list-style-type: none"> • Unique multi-family investment opportunity with a well-positioned urban location south of Quinpool • Steady income with room for upside • Currently set up as two (2) large shared and furnished housing units
Contact(s)	Geof Ralph & Connie Amero

NEW | FOR SALE

THE SHOPPES AT OSPREY VILLAGE, NS



Size	GLA of 46,904 sf
Price	Contact the listing agent
Features	<ul style="list-style-type: none"> • Presented by Partners Global & JLL's National Retail Investment Group • 97.1% leased to a strong and diverse tenant • Approx. 47,350 sf of retail density upside • Strategically situated off Hwy 103
Contact(s)	Todd Bechard

FOR LEASE | OFFICE

Click the property photos for more information



Address	1801 Hollis Street, Halifax
Size	Suite 2210: +/- 3,500 rsf
Price	By negotiation (contact the listing agent)
Details	Top floor corner office sublease with impressive city views; remaining furniture is negotiable; suitable to a wide variety of office users; available immediately
Contact(s)	Erin Crosby



Address	2717 Joseph Howe Drive, Halifax
Size	5 th Floor: 10,198 sf
Price	By negotiation (contact a listing agent)
Details	Short- or long-term modern and quality office space overlooking the Northwest Arm; option to include remaining furniture
Contact(s)	Connie Amero & Geof Ralph



Address	2 Ralston Avenue, Dartmouth
Size	Up to +/- 15,000 sf
Price	By negotiation (contact a listing agent)
Details	New signature office building in high-profile setting; Corner of Windmill Rd and Ralston Ave; Class A space, with 50% pre-leased; tenant fit-up scheduled for Feb '21
Contact(s)	Geof Ralph & Connie Amero



Address	137 Chain Lake Drive, Halifax
Size	4,702 sf
Price	\$16.00 psf (net)
Details	Bright quality office in Bayers Lake Business Park; free on-site surface parking; efficient layout on the ground floor, with dedicated entrance
Contact(s)	Connie Amero



Address	2111 Maitland Street, Halifax
Size	1,842 sf
Price	By negotiation (contact a listing agent)
Details	Rare and unique office opportunity. Architecturally designed loft nestled between Gottingen and Brunswick Streets in the North End.
Contact(s)	Connie Amero & Geof Ralph



Address	109 Williams Avenue, Dartmouth
Size	5,046 sf
Price	\$7.50 psf (net)
Details	Class A commercial office space in Burnside; ideally configured for a non-profit or similar organization; tenant and broker incentives available!
Contact(s)	Connie Amero & Geof Ralph



Address	35 Baker Drive, Dartmouth
Size	Suite 101: 1,850 sf
Price	\$18.50 psf (net)
Details	Bright, quality, move-in ready office space; free on-site surface parking; existing fixturing is well-suited to medical office use, however easily adaptable
Contact(s)	Connie Amero



Address	235 Townsend Street, Sydney
Size	Up to +/- 20,000 sf
Price	\$10.00 psf (net)
Details	Fully built-out two-storey office building, with elevator service and ample on-site parking; some options to demise; minutes to Sydney's downtown core
Contact(s)	Connie Amero & Geof Ralph

FOR LEASE | OFFICE

Click the property photos for more information



Address	250 Brownlow Avenue, Dartmouth
Size	Unit 1: 5,424 sf
Price	\$10.00 psf \$9.00 psf (net)
Details	Quality commercial space at Parkway Place in the City of Lakes Business Park; fully built-out; free on-site parking; tenant and broker incentives
Contact(s)	Connie Amero & Geof Ralph



Address	72 Portland Street, Dartmouth
Size	Between 537 sf and 6,253 sf
Price	By negotiation
Details	Brick-and-beam character office space in Downtown Dartmouth; creative, second-floor space, with elevator service; some paid on-site parking
Contact(s)	Geof Ralph



Address	2632 Windsor Street, Halifax
Size	+/- 2,300 sf
Price	By negotiation (contact a listing agent)
Details	Prime commercial space between North and West End Halifax; second storey walk-up office space; ideal for professional services, wellness clinic, or general office
Contact(s)	Geof Ralph & Connie Amero



Address	237 Brownlow Avenue, Dartmouth
Size	3,240 sf
Price	\$20.00 psf (gross)
Details	Park Place III - fully-furnished office sublet in City of Lakes Business Park; convenient and easily accessible location; stylish and bright suite; term ends Sept. 30, 2023
Contact(s)	Geof Ralph



Address	332 Willow Street, Truro
Size	Up to 6,145 sf
Price	By negotiation (contact the listing agent)
Details	Move-in ready professional office space on the second floor of Covington Place; fully built-out space; elevator service, on-site parking and pylon signage opps.
Contact(s)	Connie Amero



Address	1809 Barrington Street, Halifax
Size	Suite 1101: 2,500 sf
Price	\$18.00 psf (gross)
Details	Affordable and fully-furnished office sublet at CIBC Building in the heart of Downtown; 11 th floor suite with harbour views
Contact(s)	Geof Ralph



Address	35 Micmac Boulevard, Dartmouth
Size	Between 6,217 sf and 23,922 sf
Price	\$20.00 psf (net)
Details	The Bluenose Building - a brand new Class A office development next door to Mic Mac Mall; central location, with surface parking and top-quality amenities
Contact(s)	Geof Ralph & Connie Amero



Address	1801 Hollis Street, Halifax
Size	1,397 sf to 10,350 sf
Price	By negotiation (contact a listing agent)
Details	Move-in ready, furnished model suites, fully built-out space, or build to suit options at this Class A office tower downtown; broker incentive program!
Contact(s)	Geof Ralph & Connie Amero

FOR LEASE | OFFICE

Click the property photos for more information



Address	190 Victoria Street, Dartmouth
Size	2,650 sf
Price	\$8.00 psf (net)
Details	Well-situated and move-in ready professional office space at Keating Place; free rent incentives on the second floor; good visibility and free on-site parking
Contact(s)	Geof Ralph



Address	294 Cobequid Road, Lower Sackville
Size	Options between +/- 1,147 sf and 2,827 sf
Price	By negotiation (contact the listing agent)
Details	Affordable suburban office space at Vimiga Professional Centre; 1,147 sf available now; free on-site parking, balconies, and signage opps.
Contact(s)	Geof Ralph



Address	38-40 Fielding Avenue, Dartmouth
Size	1,807 sf
Price	By negotiation (contact the listing agent)
Details	Quality office in Burnside Business Park; air-conditioned, corner office suite; well-located between two arterial routes; ample free on-site parking
Contact(s)	Geof Ralph

FOR LEASE | INDUSTRIAL

Click the property photos for more information



Address	192 Joseph Zatzman Drive, Dartmouth
Size	Up to 5,803 sf
Price	\$7.00 psf (net)
Details	Traditional flex space in Burnside Business Park; dock and grade loading, on-site parking; options available immediately
Contact(s)	Connie Amero & Geof Ralph



Address	127 Joseph Zatzman Drive, Dartmouth
Size	4,535 sf
Price	\$14.50 psf (net)
Details	Perfect combination of office and warehouse in central Burnside; single-user building; 50/50 office to warehouse split; building is also for sale
Contact(s)	Connie Amero & Geof Ralph



Address	130 John Savage Avenue, Dartmouth
Size	Unit 6: 7,804 sf
Price	\$8.25 psf (net)
Details	High-quality industrial warehouse space in Burnside Business Park; free on-site parking; grade and dock level loading; available immediately
Contact(s)	Connie Amero & Geof Ralph



Address	28-38 Borden Avenue, Dartmouth
Size	Between 3,600 sf and 8,830 sf
Price	\$7.25 psf (net)
Details	Warehouse situated in Burnside Business Park; cost-effective and centrally located; wide open space leaving lots of flexibility in terms of fit-up and use
Contact(s)	Connie Amero & Geof Ralph



Address	12-26 Borden Avenue, Dartmouth
Size	Units 1-3: Up to 8,994 sf
Price	\$7.25 psf (net)
Details	Warehouse end cap for lease in the heart of Burnside; easy access; available December 2020; on-site parking; 24' clear heights
Contact(s)	Connie Amero & Geof Ralph



Address	196 Joseph Zatzman Drive
Size	+/- 2,000 sf
Price	\$7.00 psf (net)
Details	One unit remaining at this strip plaza in Burnside Business Park; build-to-suit space with dock loading and 18' ceilings; free on-site parking
Contact(s)	Connie Amero & Geof Ralph



Address	122 Dorey Avenue, Dartmouth
Size	Up to +/- 30,849 sf
Price	\$8.50 psf (net)
Details	High-quality industrial end cap space in Burnside Business Park; available on notice; LEED Certified building; 24' clear height and grade and dock level loading
Contact(s)	Connie Amero & Geof Ralph

FOR LEASE | COMMERCIAL

Click the property photos for more information



Address	2050 Gottingen Street, Halifax
Size	1,550 sf
Price	By negotiation (contact a listing agent)
Details	Brand new high-profile corner commercial space in the city's vibrant North End; street-level restaurant, plus four-season rooftop patio
Contact(s)	Geof Ralph & Connie Amero



Address	2172 Gottingen Street, Halifax
Size	1,285 sf
Price	By negotiation (contact a listing agent)
Details	High-profile street-level space on bustling North End corridor; ideal for restaurant / food service use, with rooftop patio; available immediately for tenant fit-up
Contact(s)	Geof Ralph & Connie Amero



Address	380 Pleasant Street, Dartmouth
Size	Unit 4: 1,295 sf
Price	\$12.00 psf (net)
Details	Small commercial tenancy with big frontage and exposure at strip plaza; currently set up as a dental office; ample surface parking
Contact(s)	Geof Ralph & Connie Amero



Address	420 Higney Avenue, Dartmouth
Size	+/- 4,000 sf to +/- 6,336 sf
Price	By negotiation (contact the listing agent)
Details	Two (2) options available at this attractive commercial plaza in Burnside Business Park; functional flex-space with both dock and grade loading
Contact(s)	Geof Ralph



Address	842 Portland Street, Dartmouth
Size	+/- 1,350 sf
Price	Contact the listing agent
Details	Brand new space with massive visibility on a main arterial route; retail / profile office; building is 95% pre-leased to strong-covenant tenants; available now
Contact(s)	Erin Crosby



Address	75 Peakview Way, Bedford
Size	Unit 107: 3,054 sf
Price	\$21.50 psf (net)
Details	Prime commercial space within Hemlock Square in West Bedford; unit is configured to retail but could be converted to a variety of wellness-type businesses
Contact(s)	Connie Amero



Address	5659 Almon Street, Halifax
Size	+/- 1,300 sf
Price	\$26.00 psf (net)
Details	Bright ground floor commercial space in North End Halifax; next door to popular restaurant Almonak; ideal home for retail and/or service oriented business
Contact(s)	Geof Ralph



Address	501 Timberlea Village Parkway, Timberlea
Size	2,033 sf (last space remaining!)
Price	\$25.00 psf (net)
Details	Position your business at this high volume intersection in a rapidly developing area; brand new commercial development anchored by Nova Physiotherapy
Contact(s)	Connie Amero

FOR LEASE | COMMERCIAL

Click the property photos for more information



Address	72 Portland Street, Dartmouth
Size	4,011 sf
Price	\$29.00 psf (semi-gross)
Details	High profile commercial space in the heart of Downtown Dartmouth; former pharmacy/clinic, but could be converted to full retail or cafe/restaurant
Contact(s)	Geof Ralph

FOR SALE | ALL CLASSES

Click the property photos for more information



Address	Oakhill Road, Dayspring
Size	94.72 acres
Price	\$895,000
Details	Unique large acreage offering situated off Hwy 103 near Bridgewater; formerly a sawmill, this property is serviced, fully secure & improved with several structures
Contact(s)	Geof Ralph & Connie Amero



Address	135 & 137 Chain Lake Drive, Halifax
Size	23,782 sf existing, with the possibility of adding another 40,000 sf on adjacent land
Price	Unpriced; open to offers
Details	Rare opportunity to invest and develop in Bayers Lake Business Park; flexible zoning that permits commercial and industrial
Contact(s)	Ian Stanley & Brian Toole



Address	The Shoppes of Osprey Village
Size	GLA: 46,904 sf; Site Area: 40.1 acres
Price	Unpriced
Details	Situated off Highway 103 at the exit to Bridgewater, this complex is 97.1 leased to a strong and diverse roster of tenants and offers 47,350 sf of density upside
Contact(s)	Todd Bechard



Address	The Madison, 24 Farringdon Way, Bedford
Size	38 suites
Price	Unpriced; open to offers
Details	Calling all investors! The Madison is a brand-new, four-storey luxury apartment building in the heart of West Bedford; Click the property photo for more details
Contact(s)	Ian Stanley & Brian Toole



Address	6319-6321 Pepperell Street, Halifax
Size	18 room multi-family investment
Price	\$1,750,000
Details	Unique investment opportunity situated just south of Quinpool Road; property is currently set up as two large shared and furnished housing units; 100% occupied
Contact(s)	Geof Ralph & Connie Amero



Address	127 Joseph Zatzman Drive, Dartmouth
Size	4,535 sf
Price	\$975,000
Details	Ideal owner-occupier opportunity; perfect combination of office and warehouse in central Burnside; 50/50 office to warehouse split; building is also for lease
Contact(s)	Connie Amero & Geof Ralph



Address	Nova Scotia Property Portfolio
Size	Six (6) locations, eight (8) buildings
Price	\$5,400,000
Details	Solid mixed-use investment portfolio; strategically located assets, along main corridors; majority commercial use plus some residential units; 100% occupied
Contact(s)	Connie Amero



Address	450 Highway 2, Enfield
Size	+/- 7,661 sf
Price	By negotiation (contact the listing agent)
Details	Former Curry's Pub & Grub location; high-growth location with excellent exposure; option to include the restaurant's character-filled decor
Contact(s)	Geof Ralph

FOR SALE | ALL CLASSES

Click the property photos for more information



Address	Parkway Drive, Truro Heights
Size	+/- 4.5 acres to 9.0 acres
Price	\$900,000 (\$100,000 per acre)
Details	Commercial / light industrial development land well-situated in Truro Heights Industrial Park; backs onto Highway 102, near exit 13 (Truro Heights Connector Rd)
Contact(s)	Connie Amero



Address	Lot 2A, 450 Highway 2, Enfield
Size	5.79 acres
Price	By negotiation (contact the listing agent)
Details	Commercial development land located in the growing community of Enfield; Zoned a combination of R2 and MC, allowing for various development options
Contact(s)	Geof Ralph



Address	255 George Street, Sydney
Size	30,000 sf (on 1.19 acres)
Price	\$2,400,000
Details	Investment opportunity with long-term redevelopment potential; corner property situated just two (2) blocks from downtown Sydney's waterfront
Contact(s)	Connie Amero



Address	Park Street, Kentville
Size	Up to 94.5 acres
Price	\$1,197,000 (\$12,666 per acre)
Details	Large acreage commercial/light industrial development land adjacent to Kentville Business Park; option to purchase entire site, 72.0 acres, or 22.5 acres
Contact(s)	Connie Amero



Address	1818 Shore Road, Eastern Passage
Size	5.8 acres
Price	\$900,000
Details	Significant as-of-right development opp. for 31 dwellings in an established residential community; urban infill site with ocean views
Contact(s)	Kevin Riles

CONTACT US

Brian Toole, *Principal, Tenant Advisory*

M 902.476.6898

brian@partnersglobal.com

Ian Stanley, *Principal & Co-Head, Investments & Capital Markets*

M 902.229.7100

ian@partnersglobal.com

Geof Ralph, *Vice-President*

M 902.877.9324

geof@partnersglobal.com

Connie Amero, *Broker of Record*

M 902.802.8480

connie@partnersglobal.com

Todd Bechard, *Co-Head, Investments & Capital Markets*

M 902.402.3076

todd@partnersglobal.com

Erin Crosby, *Senior Advisor, Tenant Advisory*

M 902.877.1849

erin@partnersglobal.com

Kevin Riles, *Senior Advisor*

M 902.403.7847

kevin@partnersglobal.com

Jacquelyn Moriarty, *Sales & Marketing Coordinator*

M 902.440.3937

jacquelyn@partnersglobal.com

Alison Sowerby, *Executive Coordinator*

M 902.580.0577

alison@partnersglobal.com

Partners Global Corporate Real Estate (Partners Global) and its agents and affiliates do not warrant, represent or guarantee the accuracy, completeness or validity of the information provided herein. Parties interested in the property are to conduct their own independent investigations to determine the suitability of the property for their intended use and are strongly urged to discuss the property with their professional advisors. Partners Global expressly disclaims any liability arising out of any errors and omissions in the information. Prospective clients should not confine themselves to the contents but should make their own enquiries to satisfy themselves in all respects. Partners Global will not accept any responsibility should any details prove to be incomplete or incorrect.

partnersglobal.com

