

**SUBLEASE**



## UNIT 12A, 109 ILSLEY AVENUE DARTMOUTH, NOVA SCOTIA

### Office Space for Sublease in Burnside Business Park

- 828 sf available now
- High exposure
- Head lease expires September 30, 2023

Perfectly situated in Burnside Business Park, 109 Ilesley Avenue is a multi-tenant complex with high exposure and is easily accessible from Highways 111, 118 and both Halifax bridges.

Unit 12A comprises 828 sf of nicely built-out office space, with large front windows and exterior signage opportunities. This professionally managed property includes ample free surface parking and quick access to major ground public transit.

[partnersglobal.com](http://partnersglobal.com)

## FOR SUBLEASE

\$8.50 psf (net)

**Connie Amero**

**D (902) 431-9967**

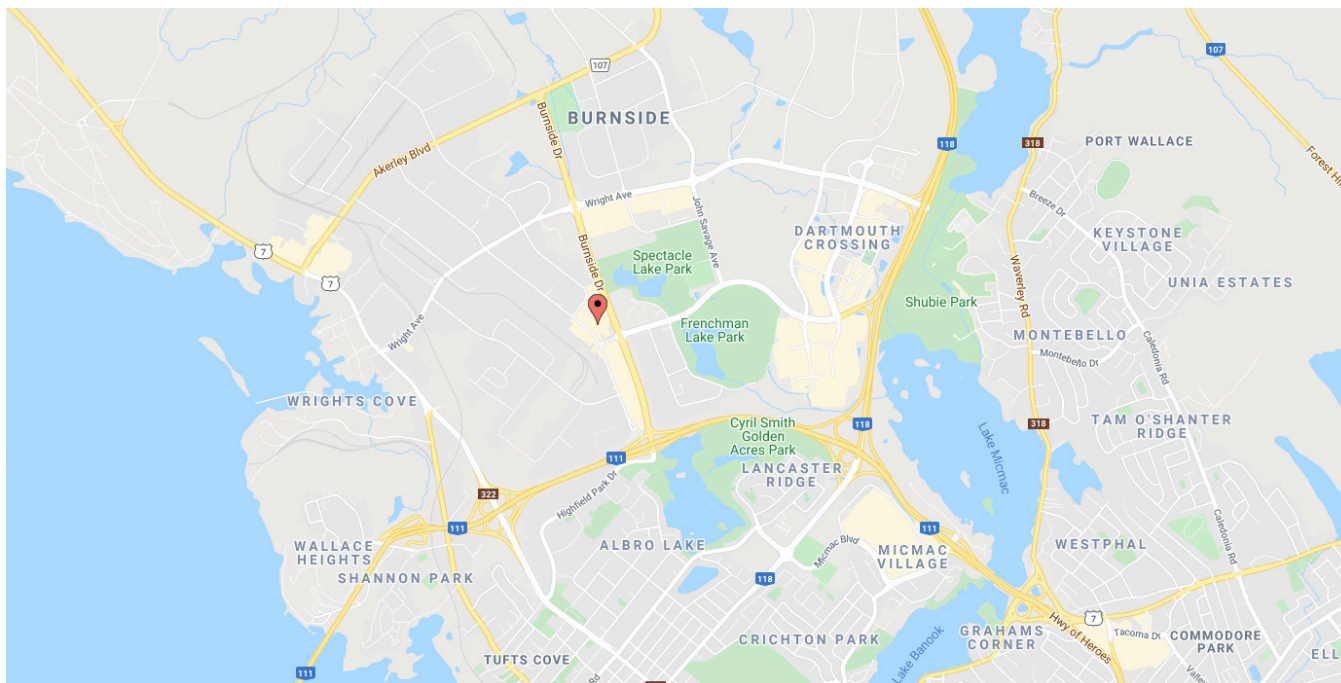
**M (902) 802-8480**

[connie@partnersglobal.com](mailto:connie@partnersglobal.com)



**PARTNERS GLOBAL**  
CORPORATE REAL ESTATE

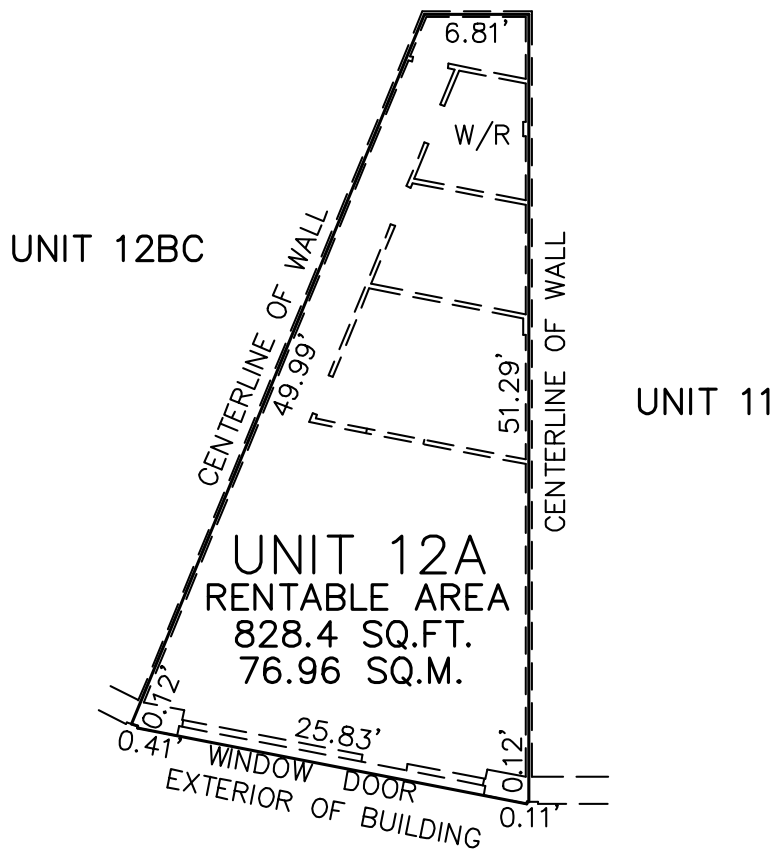
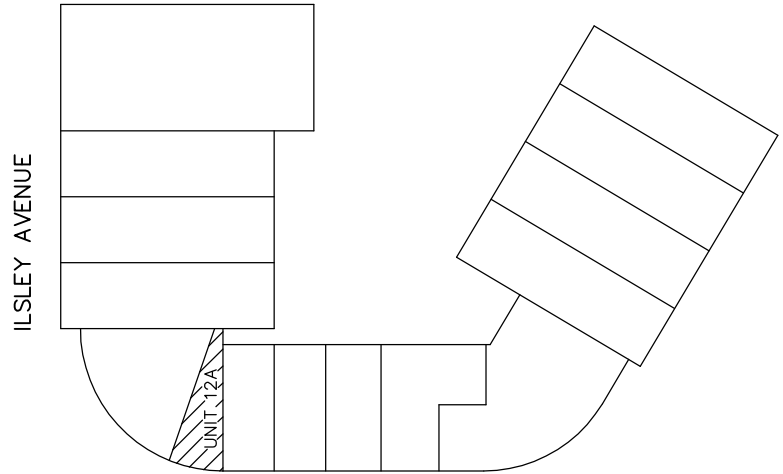
## Unit 12A, 109 Ilsley Avenue | Dartmouth, Nova Scotia



<b>LISTING ID</b>	10254
<b>ADDRESS</b>	Unit 12A, 109 Ilsley Avenue, Dartmouth
<b>LOCATION</b>	Burnside Business Park
<b>SIZE AVAILABLE</b>	828 sf
<b>FLOOR LOCATION</b>	Ground of 1
<b>AVAILABILITY</b>	Immediately
<b>PARKING</b>	Ample on-site paved surface parking (free)
<b>BASE RENT</b>	\$8.50 psf (net)
<b>ADDITIONAL RENT</b>	\$6.26 psf (2020 estimate)
<b>HEAD LEASE EXPIRY</b>	September 30, 2023

# Unit 12A, 109 Ilsley Avenue | Dartmouth, Nova Scotia

## FLOOR PLAN



Partners Global Corporate Real Estate (Partners Global) and its agents and affiliates do not warrant, represent or guarantee the accuracy, completeness or validity of the information provided herein. Parties interested in the property are to conduct their own independent investigations to determine the suitability of the property for their intended use and are strongly urged to discuss the property with their professional advisors. Partners Global expressly disclaims any liability arising out of any errors and omissions in the information. Prospective clients should not confine themselves to the contents but should make their own enquiries to satisfy themselves in all respects. Partners Global will not accept any responsibility should any details prove to be incomplete or incorrect.