



# NOVA SCOTIA LISTING REPORT

---

MARCH 2021

Partners Global Corporate Real Estate Inc.  
1801 Hollis Street, Suite 1420, Halifax, NS  
P (902) 444-4004 | [halifax@partnersglobal.com](mailto:halifax@partnersglobal.com)

[partnersglobal.com](https://partnersglobal.com)



# FEATURED LISTINGS

## FOR LEASE | INDUSTRIAL

130 JOHN SAVAGE AVENUE, DARTMOUTH



<b>Size</b>	Unit 6: 7,804 sf
<b>Price</b>	Contact a listing agent
<b>Features</b>	<ul style="list-style-type: none"> <li>• High-quality industrial warehouse in Burnside Business Park</li> <li>• Free on-site parking for employees and clients</li> <li>• LEED Certified building</li> <li>• 28' clear heights</li> <li>• Grade and dock level loading</li> <li>• Available now</li> </ul>
<b>Contact(s)</b>	Connie Amero & Geof Ralph

## FOR LEASE | COMMERCIAL

842 PORTLAND STREET, DARTMOUTH



<b>Size</b>	1,554 rsf
<b>Price</b>	Contact the listing agent
<b>Features</b>	<ul style="list-style-type: none"> <li>• Ground floor retail / profile office space on a main arterial route</li> <li>• Located at the high-traffic corner of Portland Street and Portland Hills Drive</li> <li>• Last remaining suite</li> <li>• Available immediately for tenant construction</li> </ul>
<b>Contact</b>	Erin Crosby

## COMING SOON | WAREHOUSE

250 BROWNLOW AVENUE, DARTMOUTH



<b>Size</b>	Up to approx. 14,000 sf
<b>Price</b>	Contact a listing agent
<b>Features</b>	<ul style="list-style-type: none"> <li>• Fantastic combination of industrial warehouse and nicely built-out office (~50/50 ratio)</li> <li>• High-exposure site in the COL Park</li> <li>• 18' clear heights</li> <li>• Dock and grade loading</li> <li>• Ample on-site parking</li> <li>• Available July 2021</li> </ul>
<b>Contact(s)</b>	Connie Amero & Geof Ralph

*Click the property photos for more information*



# FOR LEASE | OFFICE

*Click the property photos for more information*



<b>Address</b>	109 Ilsley Avenue, Dartmouth
<b>Size</b>	Unit 12A: 828 sf
<b>Price</b>	\$8.50 psf (net)
<b>Details</b>	Office sublease in Burnside Business Park with high-exposure; combination of open and enclosed space; free on-site parking; available immediately
<b>Contact</b>	Connie Amero



<b>Address</b>	2717 Joseph Howe Drive, Halifax
<b>Size</b>	5 <sup>th</sup> Floor: 10,198 sf
<b>Price</b>	By negotiation (contact a listing agent)
<b>Details</b>	Short- or long-term modern and quality office space overlooking the Northwest Arm; option to include remaining furniture
<b>Contact(s)</b>	Connie Amero & Geof Ralph



<b>Address</b>	49 Cornwallis Street, Kentville
<b>Size</b>	Options ranging from 600 sf to 2,700 sf
<b>Price</b>	By negotiation (contact the listing agent)
<b>Details</b>	Office space for lease in downtown Kentville; attractive building with great access and profile; elevator to second level; 2 <sup>nd</sup> floor available immediately
<b>Contact</b>	Connie Amero



<b>Address</b>	137 Chain Lake Drive, Halifax
<b>Size</b>	4,702 sf
<b>Price</b>	\$16.00 psf (net)
<b>Details</b>	Bright quality office in Bayers Lake Business Park; free on-site surface parking; efficient layout on the ground floor, with dedicated entrance
<b>Contact(s)</b>	Connie Amero



<b>Address</b>	1801 Hollis Street, Halifax
<b>Size</b>	Suite 2210: +/- 3,500 rsf
<b>Price</b>	By negotiation (contact the listing agent)
<b>Details</b>	Top floor corner office sublease with impressive city views; remaining furniture is negotiable; suitable to a wide variety of office users; available immediately
<b>Contact</b>	Erin Crosby



<b>Address</b>	235 Townsend Street, Sydney
<b>Size</b>	Up to +/- 27,600 sf
<b>Price</b>	\$10.00 psf (net)
<b>Details</b>	Fully built-out two-storey office building, with elevator service and ample on-site parking; some options to demise; minutes to Sydney's downtown core
<b>Contact(s)</b>	Connie Amero & Geof Ralph



<b>Address</b>	2 Ralston Avenue, Dartmouth
<b>Size</b>	Up to +/- 15,000 sf
<b>Price</b>	By negotiation (contact a listing agent)
<b>Details</b>	New signature office building in high-profile setting; Corner of Windmill Rd and Ralston Ave; Class A space, with 50% pre-leased; tenant fit-up scheduled for Feb '21
<b>Contact(s)</b>	Geof Ralph & Connie Amero



<b>Address</b>	250 Brownlow Avenue, Dartmouth
<b>Size</b>	Unit 1: 5,424 sf
<b>Price</b>	\$10.00 psf
<b>Details</b>	Quality commercial space at Parkway Place in the City of Lakes Business Park; fully built-out; free on-site parking; <b>tenant incentives available</b>
<b>Contact(s)</b>	Connie Amero & Geof Ralph

# FOR LEASE | OFFICE

*Click the property photos for more information*



<b>Address</b>	2632 Windsor Street, Halifax
<b>Size</b>	+/- 2,300 sf
<b>Price</b>	By negotiation (contact a listing agent)
<b>Details</b>	Prime commercial space between North and West End Halifax; second storey walk-up office space; ideal for professional services, wellness clinic, or general office
<b>Contact(s)</b>	Geof Ralph & Connie Amero



<b>Address</b>	1801 Hollis Street, Halifax
<b>Size</b>	1,397 sf to 10,350 sf
<b>Price</b>	By negotiation (contact a listing agent)
<b>Details</b>	Move-in ready, furnished model suites, fully built-out space, or build to suit options at this Class A office tower downtown; <b>broker incentive program!</b>
<b>Contact(s)</b>	Geof Ralph & Connie Amero



<b>Address</b>	35 Micmac Boulevard, Dartmouth
<b>Size</b>	Between 6,217 sf and 23,922 sf
<b>Price</b>	\$20.00 psf (net)
<b>Details</b>	The Bluenose Building - a brand new Class A office development next door to Mic Mac Mall; central location, with surface parking and top-quality amenities
<b>Contact(s)</b>	Geof Ralph & Connie Amero



<b>Address</b>	190 Victoria Street, Dartmouth
<b>Size</b>	735 sf to 2,650 sf
<b>Price</b>	Starting at \$8.00 psf (net)
<b>Details</b>	Well-situated and move-in ready professional office space at Keating Place; free rent incentives; good visibility and free on-site parking
<b>Contact(s)</b>	Geof Ralph



<b>Address</b>	72 Portland Street, Dartmouth
<b>Size</b>	Up to +/- 8,500 sf
<b>Price</b>	By negotiation
<b>Details</b>	Brick-and-beam character office space in Downtown Dartmouth; creative, second-floor space, with elevator service; some paid on-site parking
<b>Contact(s)</b>	Geof Ralph



<b>Address</b>	294 Cobequid Road, Lower Sackville
<b>Size</b>	1,147 sf
<b>Price</b>	By negotiation (contact the listing agent)
<b>Details</b>	Affordable suburban office space at Vimiga Professional Centre; enclosed offices, reception and kitchenette; available now; free on-site parking
<b>Contact(s)</b>	Geof Ralph



<b>Address</b>	237 Brownlow Avenue, Dartmouth
<b>Size</b>	3,240 sf
<b>Price</b>	\$20.00 psf (gross)
<b>Details</b>	Park Place III - fully-furnished office sublet in City of Lakes Business Park; convenient and easily accessible location; stylish and bright suite; term ends Sept. 30, 2023
<b>Contact(s)</b>	Geof Ralph



<b>Address</b>	38-40 Fielding Avenue, Dartmouth
<b>Size</b>	1,807 sf
<b>Price</b>	By negotiation (contact the listing agent)
<b>Details</b>	Quality office in Burnside Business Park; air-conditioned, corner office suite; well-located between two arterial routes; ample free on-site parking
<b>Contact(s)</b>	Geof Ralph

# FOR LEASE | INDUSTRIAL

*Click the property photos for more information*



<b>Address</b>	250 Brownlow Avenue, Dartmouth
<b>Size</b>	Up to approx. 14,000 sf
<b>Price</b>	By negotiation (contact a listing agent)
<b>Details</b>	Combination of industrial warehouse and nicely built-out office (~50/50 ratio) in the City of Lakes Business Park; dock and grade loading; available July 2021
<b>Contact</b>	Connie Amero & Geof Ralph



<b>Address</b>	110 Chain Lake Drive, Halifax
<b>Size</b>	Unit 3K/L: 3,006 sf
<b>Price</b>	By negotiation (contact a listing agent)
<b>Details</b>	Industrial flex space for sublet in Bayer Lake Business Park; end-cap with great exposure; suitable to a wide variety of uses; dock loading; available April 2021
<b>Contact(s)</b>	Connie Amero & Geof Ralph



<b>Address</b>	192 Joseph Zatzman Drive, Dartmouth
<b>Size</b>	Up to 3,872 sf available immediately
<b>Price</b>	\$7.00 psf (net)
<b>Details</b>	Traditional flex space in Burnside Business Park; mixture of dock and grade loading; 18' clear heights; on-site parking; additional availability coming Q4 2021
<b>Contact(s)</b>	Connie Amero & Geof Ralph



<b>Address</b>	130 John Savage Avenue, Dartmouth
<b>Size</b>	Unit 6: 7,804 sf
<b>Price</b>	By negotiation (contact a listing agent)
<b>Details</b>	High-quality industrial warehouse space in Burnside Business Park; free on-site parking; grade and dock level loading; available immediately
<b>Contact(s)</b>	Connie Amero & Geof Ralph



<b>Address</b>	28-38 Borden Avenue, Dartmouth
<b>Size</b>	Unit 12: 3,600 sf
<b>Price</b>	By negotiation (contact a listing agent)
<b>Details</b>	Warehouse situated in Burnside Business Park; last remaining space in building; wide open space leaving lots of flexibility in terms of build-out and use
<b>Contact(s)</b>	Connie Amero & Geof Ralph

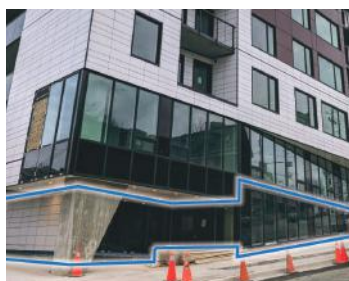


<b>Address</b>	196 Joesph Zatzman Drive
<b>Size</b>	+/- 2,000 sf
<b>Price</b>	\$7.00 psf (net)
<b>Details</b>	One unit remaining at this strip plaza in Burnside Business Park; build-to-suit space with dock loading and 18' ceilings; free on-site parking
<b>Contact(s)</b>	Connie Amero & Geof Ralph



# FOR LEASE | COMMERCIAL

*Click the property photos for more information*



<b>Address</b>	5426 Portland Place, Halifax
<b>Size</b>	+/- 2,600 sf
<b>Price</b>	By negotiation (contact a listing agent)
<b>Details</b>	Brand new North End commercial space at The Anthony; suitable for a variety of uses; available immediately for tenant construction
<b>Contact</b>	Geof Ralph



<b>Address</b>	842 Portland Street, Dartmouth
<b>Size</b>	1,554 rsf
<b>Price</b>	Contact the listing agent
<b>Details</b>	Brand new space with massive visibility on a main arterial route; retail / profile office; building is 95% pre-leased to strong-covenant tenants; available now
<b>Contact(s)</b>	Erin Crosby



<b>Address</b>	2050 Gottingen Street, Halifax
<b>Size</b>	Ground: 1,550 sf; Penthouse: ~3,000 sf
<b>Price</b>	By negotiation (contact a listing agent)
<b>Details</b>	Brand new high-profile corner commercial space in the city's vibrant North End; options available on the ground and penthouse levels
<b>Contact(s)</b>	Geof Ralph & Connie Amero



<b>Address</b>	75 Peakview Way, Bedford
<b>Size</b>	Unit 107: 3,054 sf
<b>Price</b>	\$21.50 psf (net)
<b>Details</b>	Prime commercial space within Hemlock Square in West Bedford; unit is configured to retail but could be converted to a variety of wellness-type businesses
<b>Contact(s)</b>	Connie Amero



<b>Address</b>	2172 Gottingen Street, Halifax
<b>Size</b>	1,285 sf
<b>Price</b>	By negotiation (contact a listing agent)
<b>Details</b>	High-profile street-level space on bustling North End corridor; ideal for restaurant / food service use, with rooftop patio; available immediately for tenant fit-up
<b>Contact(s)</b>	Geof Ralph & Connie Amero



<b>Address</b>	501 Timberlea Village Parkway, Timberlea
<b>Size</b>	2,033 sf (last space remaining!)
<b>Price</b>	\$25.00 psf (net)
<b>Details</b>	Position your business at this high volume intersection in a rapidly developing area; brand new commercial development anchored by Nova Physiotherapy
<b>Contact(s)</b>	Connie Amero



<b>Address</b>	420 Higney Avenue, Dartmouth
<b>Size</b>	+/- 4,000 sf
<b>Price</b>	By negotiation (contact the listing agent)
<b>Details</b>	High-quality commercial end-cap space in Burnside Business Park; functional layout with attractive curb appeal; 26' clear heights; dock and grade loading
<b>Contact(s)</b>	Geof Ralph



<b>Address</b>	72 Portland Street, Dartmouth
<b>Size</b>	4,011 sf
<b>Price</b>	\$29.00 psf (semi-gross)
<b>Details</b>	High profile commercial space in the heart of Downtown Dartmouth; former pharmacy/clinic, but could be converted to full retail or cafe/restaurant
<b>Contact(s)</b>	Geof Ralph

# FOR SALE | ALL CLASSES

*Click the property photos for more information*



<b>Address</b>	295 Highway 335, Pubnico
<b>Size</b>	+/- 960 sf, set on 19,602 sf (0.45 ac)
<b>Price</b>	\$85,000
<b>Details</b>	Light industrial building with fenced yard in Yarmouth County; being offered "as is"; office and warehouse combination; former utility building built in 1976
<b>Contact(s)</b>	Geof Ralph & Connie Amero



<b>Address</b>	88 Highway 336, Upper Musquodoboit
<b>Size</b>	+/- 1,830 sf, set on 2.32 acres
<b>Price</b>	\$120,000
<b>Details</b>	Well-maintained commercial property with large fenced-in yard; being offered "as is"; office and warehouse combination; former utility building built 1988
<b>Contact(s)</b>	Geof Ralph & Connie Amero



<b>Address</b>	60 Pine Street, Tatamagouche
<b>Size</b>	+/- 768 sf, set on 2.18 acres
<b>Price</b>	\$60,000
<b>Details</b>	Commercial property just off the main corridor in Tatamagouche; being offered "as is"; office and warehouse combination, with grade loading and fenced yard
<b>Contact(s)</b>	Geof Ralph & Connie Amero



<b>Address</b>	Nova Scotia Property Portfolio
<b>Size</b>	Three (3) locations, five (5) buildings
<b>Price</b>	\$2,800,000
<b>Details</b>	Solid commercial investment portfolio; strategically located and well-maintained assets; 100% occupied by a coronavirus-proof tenant mix
<b>Contact(s)</b>	Connie Amero



<b>Address</b>	8759 Commercial Street, New Minas
<b>Size</b>	19,764 sf
<b>Price</b>	\$1,350,000
<b>Details</b>	Fully-leased mixed-use investment property along commercial corridor between New Minas and Kentville; ground floor commercial with residential above
<b>Contact(s)</b>	Connie Amero



<b>Address</b>	797 Prince Street, Truro
<b>Size</b>	10,814 sf
<b>Price</b>	\$925,000
<b>Details</b>	Fully-leased downtown Truro investment property; strong covenant government tenant; well maintained property, with some parking and elevator service
<b>Contact(s)</b>	Connie Amero



<b>Address</b>	49 Cornwallis Street, Kentville
<b>Size</b>	13,720 sf
<b>Price</b>	\$1,500,000
<b>Details</b>	Attractive office investment anchored by provincial government; well-maintained two-storey building with elevator; ample on-site parking
<b>Contact(s)</b>	Connie Amero



<b>Address</b>	100 Station Lane, Kentville
<b>Size</b>	12,946 sf
<b>Price</b>	\$2,550,000
<b>Details</b>	Fully-leased mixed-use investment opportunity; newer three-storey concrete tilt-up construction with elevator; ample on-site parking
<b>Contact(s)</b>	Connie Amero



# FOR SALE | ALL CLASSES

*Click the property photos for more information*



<b>Address</b>	332 Willow Street, Truro
<b>Size</b>	17,585 sf
<b>Price</b>	\$3,350,000
<b>Details</b>	Fully-leased professional office investment on the edge of downtown Truro; newer concrete tilt-up construction with elevator; ample on-site parking
<b>Contact(s)</b>	Connie Amero



<b>Address</b>	6319-6321 Pepperell Street, Halifax
<b>Size</b>	18 room multi-family investment
<b>Price</b>	\$1,750,000
<b>Details</b>	Unique investment opportunity situated just south of Quinpool Road; property is currently set up as two large shared and furnished housing units; 100% occupied
<b>Contact(s)</b>	Geof Ralph & Connie Amero



<b>Address</b>	Oakhill Road, Dayspring
<b>Size</b>	94.72 acres
<b>Price</b>	\$895,000
<b>Details</b>	Unique large acreage offering situated off Hwy 103 near Bridgewater; formerly a sawmill, this property is serviced, fully secure & improved with several structures
<b>Contact(s)</b>	Geof Ralph & Connie Amero



<b>Address</b>	135 & 137 Chain Lake Drive, Halifax
<b>Size</b>	23,782 sf existing, with the possibility of adding another 40,000 sf on adjacent land
<b>Price</b>	Unpriced; open to offers
<b>Details</b>	Rare opportunity to invest and develop in Bayers Lake Business Park; flexible zoning that permits commercial and industrial
<b>Contact(s)</b>	Ian Stanley & Brian Toole



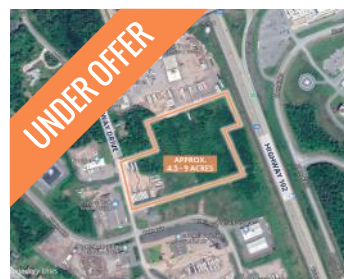
<b>Address</b>	235 Townsend Street, Sydney
<b>Size</b>	+/- 27,600 sf
<b>Price</b>	\$1,575,000
<b>Details</b>	Professional office building near downtown core; two-storey building with elevator; ample on-site parking; zoned Downtown Central Business District (CBD)
<b>Contact(s)</b>	Connie Amero & Geof Ralph



<b>Address</b>	127 Joseph Zatzman Drive, Dartmouth
<b>Size</b>	4,535 sf
<b>Price</b>	\$975,000
<b>Details</b>	Ideal owner-occupier opportunity; perfect combination of office and warehouse in central Burnside; 50/50 office to warehouse split; building is also for lease
<b>Contact(s)</b>	Connie Amero & Geof Ralph



<b>Address</b>	The Shoppes of Osprey Village
<b>Size</b>	GLA: 46,904 sf; Site Area: 40.1 acres
<b>Price</b>	Unpriced
<b>Details</b>	Situated off Highway 103 at the exit to Bridgewater, this complex is 97.1 leased to a strong and diverse roster of tenants and offers 47,350 sf of density upside
<b>Contact(s)</b>	Todd Bechard



<b>Address</b>	Parkway Drive, Truro Heights
<b>Size</b>	+/- 4.5 acres to 9.0 acres
<b>Price</b>	\$900,000 (\$100,000 per acre)
<b>Details</b>	Commercial / light industrial development land well-situated in Truro Heights Industrial Park; backs onto Highway 102, near exit 13 (Truro Heights Connector Rd)
<b>Contact(s)</b>	Connie Amero



# FOR SALE | ALL CLASSES

*Click the property photos for more information*



<b>Address</b>	255 George Street, Sydney
<b>Size</b>	30,000 sf (on 1.19 acres)
<b>Price</b>	\$2,400,000
<b>Details</b>	Investment opportunity with long-term redevelopment potential; corner property situated just two (2) blocks from downtown Sydney's waterfront
<b>Contact(s)</b>	Connie Amero



<b>Address</b>	Park Street, Kentville
<b>Size</b>	Up to 94.5 acres
<b>Price</b>	\$1,197,000 (\$12,666 per acre)
<b>Details</b>	Large acreage commercial/light industrial development land adjacent to Kentville Business Park; option to purchase entire site, 72.0 acres, or 22.5 acres
<b>Contact(s)</b>	Connie Amero



<b>Address</b>	Lot 2A, 450 Highway 2, Enfield
<b>Size</b>	5.79 acres
<b>Price</b>	By negotiation (contact the listing agent)
<b>Details</b>	Commercial development land located in the growing community of Enfield; Zoned a combination of R2 and MC, allowing for various development options
<b>Contact(s)</b>	Geof Ralph

# CONTACT US

**Brian Toole**, *Principal, Tenant Advisory*

**M** 902.476.6898

brian@partnersglobal.com

**Ian Stanley**, *Principal & Co-Head, Investments & Capital Markets*

**M** 902.229.7100

ian@partnersglobal.com

**Geof Ralph**, *Vice-President*

**M** 902.877.9324

geof@partnersglobal.com

**Connie Amero**, *Broker / Senior Vice President, Sales & Leasing*

**M** 902.802.8480

connie@partnersglobal.com

**Todd Bechard**, *Co-Head, Investments & Capital Markets*

**M** 902.402.3076

todd@partnersglobal.com

**Erin Crosby**, *Senior Advisor, Tenant Advisory*

**M** 902.877.1849

erin@partnersglobal.com

**Jacquelyn Moriarty**, *Associate, Investments & Capital Markets*

**M** 902.440.3937

jacquelyn@partnersglobal.com

**Alison Sowerby**, *Marketing Coordinator*

**M** 902.580.0577

alison@partnersglobal.com

*Partners Global Corporate Real Estate (Partners Global) and its agents and affiliates do not warrant, represent or guarantee the accuracy, completeness or validity of the information provided herein. Parties interested in the property are to conduct their own independent investigations to determine the suitability of the property for their intended use and are strongly urged to discuss the property with their professional advisors. Partners Global expressly disclaims any liability arising out of any errors and omissions in the information. Prospective clients should not confine themselves to the contents but should make their own enquiries to satisfy themselves in all respects. Partners Global will not accept any responsibility should any details prove to be incomplete or incorrect.*

[partnersglobal.com](http://partnersglobal.com)

