

NEW BRUNSWICK LISTING REPORT

JUNE 2021

Partners Global Corporate Real Estate
364 York Street, Suite 205, Fredericton, NB
P (506) 453-7880 | fredericton@partnersglobal.com

partnersglobal.com



FEATURED LISTINGS

Click the property photos for more information

NEW | FOR SALE

231 SAUNDERS STREET, FREDERICTON



Size	2,875 sf
Price	\$459,000
Features	<ul style="list-style-type: none"> • Located just outside the downtown core • Currently utilized as an office plus upstairs apartment • Residential Town Plat (TP-4) Zoning • Well maintained property with tons of charm and character
Contact	Mark LeBlanc

NEW | FOR SALE

GREER STREET, HANWELL



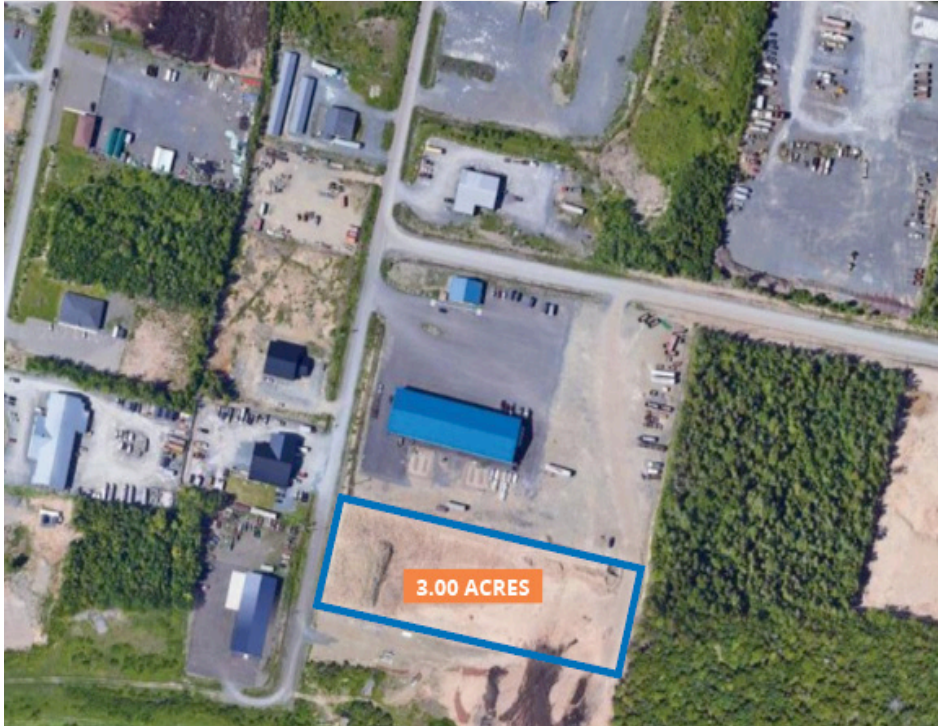
Size	27.80 acres
Price	\$700,000
Features	<ul style="list-style-type: none"> • Exceptional opportunity for land developers • Residential Zone Five (R-5) Zoning • Located just outside Fredericton • Offers quick access to amenities while maintaining a rural feel
Contact	Mark LeBlanc

FEATURED LISTINGS

Click the property photos for more information

NEW | FOR SALE

LOT 14-2, TIMOTHY AVE SOUTH, HANWELL



Size	3.00 acres
Price	\$225,000
Features	<ul style="list-style-type: none"> • Cleared land • Well situated in Greenview Industrial Park • Property offers an abundance of fill to be used on-site or potentially off-site development • Industrial Zoning
Contact	Mark LeBlanc

NEW | FOR SALE

LOT 13-1, TIMOTHY AVE SOUTH, HANWELL



Size	1.00 acre
Price	\$75,000
Features	<ul style="list-style-type: none"> • Cleared land • Well situated in Greenview Industrial Park • Quick access to Trans-Canada Highway and Hanwell Road • Industrial Zoning
Contact	Mark LeBlanc

FOR LEASE | ALL CLASSES

Click the property photos for more information



Address	100 Woodside Lane, Fredericton
Size	+/- 3,000 sf
Price	\$18.00 psf + utilities
Details	Bright commercial space features open work space, two offices and kitchenette; on-site parking, zoned Commercial Corridor Zone Two
Contact	John Bigger



Address	939 Main Street, Moncton
Size	9,000 sf
Price	\$14.50 psf (net)
Details	Modern, move-in ready space in high-growth west end Moncton; paved surface parking available; remaining furniture negotiable; efficient suite layout
Contact	Mark LeBlanc



Address	150 Smythe Street, Fredericton
Size	1,687 sf
Price	\$4,000 per month + utilities
Details	Flexible commercial space for lease in Fredericton's City Centre; high-exposure location at the Victoria Circle roundabout; grade loading; suitable for office or retail
Contact	John Bigger



Address	440 Wilsey Road, Fredericton
Size	1,841 sf
Price	\$14.00 psf (gross)
Details	Second floor corner office space in the Fredericton Industrial Park with lots of natural light and abundant free on-site parking
Contact	Mark LeBlanc



Address	102 Main Street, Fredericton
Size	2,200 sf
Price	\$21.00 psf (gross)
Details	Commercial sublet opportunity in busy Nashwaaksis Plaza, shadow-anchored by Atlantic Superstore; suitable to a variety of uses; ample on-site parking
Contact	John Bigger



Address	2398 Route 102, Lincoln
Size	+/- 8,000 sf
Price	\$14.00 psf (gross)
Details	Well-lit single-storey office leasing opportunity; good street-front visibility; abundant free on-site parking; affordable rent; options to demise
Contact	Mark LeBlanc



Address	855 Bayside Drive, Saint John
Size	14,092 sf
Price	\$6.50 psf (net)
Details	Quality single-user warehouse for sublet in Grandview Industrial Park; majority warehouse space with small office / showroom; grade and dock level loading
Contact	John Bigger



Address	125 Whiting Road, Fredericton
Size	Unit 2A: 2,891 sf
Price	\$12.50 psf (gross)
Details	Move-in ready office / warehouse space in Fredericton Industrial Park available now; high-quality space with Business Industrial (BI) zoning
Contact	Mark LeBlanc

FOR LEASE | ALL CLASSES

Click the property photos for more information



Address	160 Alison Boulevard, Fredericton
Size	3.83 acres
Price	By negotiation (contact the listing agent)
Details	Build-to-suit land development opportunity; available for single- or multiple-tenant occupancy; location offers easy access to highway and downtown
Contact	Mark LeBlanc



Address	385 Wilsey Road, Fredericton
Size	3,750 sf
Price	\$6.50 psf (net)
Details	Flexible space for industrial, office or retail purposes in Fredericton Industrial Park; well-maintained building, with 22' ceiling height and on-site parking
Contact	Mark LeBlanc



Address	214-218 Brunswick Street, Fredericton
Size	Unit 202: 1,794 sf
Price	By negotiation (contact the listing agent)
Details	Highly functional, modern sublease space near downtown in mixed-use building; some on-site parking available; elevator access and ample natural light
Contact	Mark LeBlanc

FOR SALE | ALL CLASSES

Click the property photos for more information



Address	231 Saunders Street, Fredericton
Size	2,875 sf
Price	\$459,000
Details	Located just outside the downtown core; offers ton of charm and character; zoned Residential Town Plat (TP-4); large parking area/driveway
Contact	Mark LeBlanc



Address	21 Fairway Drive, Hanwell
Size	14,281 sf
Price	\$2,100,000
Details	Recently completed, high-quality construction with easy access to Trans-Canada Highway; multi-tenanted building with ample on-site parking
Contact	Mark LeBlanc



Address	Greer Street, Hanwell
Size	27.80 acres
Price	\$700,000
Details	Development land located in one of New Brunswick's fastest growing municipalities; Residential Zone Five (R-5) Zoning
Contact	Mark LeBlanc



Address	490-494 Queen Street, Fredericton
Size	14,357 sf
Price	\$2,100,000
Details	Multi-tenant, mixed-used building centrally located on historic Queen Street; well maintained with recent upgrades; excellent exposure
Contact	Mark LeBlanc



Address	Lot 14-2 Timothy Ave South, Hanwell
Size	3.00 acres
Price	\$225,000
Details	Cleared land located in Greenview Industrial Park; quick access to Trans-Canada Highway and Hanwell Road; Industrial Zoning
Contact	Mark LeBlanc



Address	67 Main Street, Fredericton
Size	5,200 sf
Price	\$777,000
Details	Ideal owner-occupier opportunity in high-profile location with excellent exposure; office / warehouse combination; ample paved parking and a fenced-in compound
Contact	Mark LeBlanc



Address	Lot 13-1 Timothy Ave South, Hanwell
Size	1.00 acre
Price	\$75,000
Details	Cleared land located in Greenview Industrial Park; premium land and excellent location; Industrial Zoning; quick access to Trans-Canada Highway
Contact	Mark LeBlanc



Address	14 East Main Street, Port Elgin
Size	1,616 sf
Price	\$75,000
Details	Commercial property on main corridor in the village of Port Elgin; well-maintained building, formerly utilized as a post office branch; flexible mixed-use zoning
Contact	Mark LeBlanc & Connie Amero

FOR SALE | ALL CLASSES

Click the property photos for more information



Address	Greenview Drive, Hanwell
Size	3.38 acres
Price	\$389,500
Details	High-profile commercial land in Hanwell Industrial Park; well-shaped with great visibility and exposure to the Trans-Canada Highway
Contact	Mark LeBlanc



Address	400 William Street, Dalhousie
Size	5,389 sf
Price	\$149,900
Details	Located in northern New Brunswick on a main commercial corridor; well-maintained building formerly utilized as a financial institution
Contact	Mark LeBlanc & Connie Amero

CONTACT US

Mark LeBlanc, Principal & Broker

D (506) 453-1119

M (506) 260-7203

mark@partnersglobal.com

John Bigger, Senior Advisor

D (506) 453-7880

M (506) 470-5057

john@partnersglobal.com

Mona Cockburn, Office Administrator

D (506) 453-0067

mona@partnersglobal.com

Alison Sowerby, Marketing Coordinator

M (902) 580-0577

alison@partnersglobal.com

Partners Global Corporate Real Estate (Partners Global) and its agents and affiliates do not warrant, represent or guarantee the accuracy, completeness or validity of the information provided herein. Parties interested in the property are to conduct their own independent investigations to determine the suitability of the property for their intended use and are strongly urged to discuss the property with their professional advisors. Partners Global expressly disclaims any liability arising out of any errors and omissions in the information. Prospective clients should not confine themselves to the contents but should make their own enquiries to satisfy themselves in all respects. Partners Global will not accept any responsibility should any details prove to be incomplete or incorrect.

partnersglobal.com

