

SUBLEASE



5TH FLOOR, TOWER 1

2717 JOSEPH HOWE DRIVE, HALIFAX, NS

Furnished Sublease Opportunity Near Armdale Rotary

- Full-floor suite comprising 10,198 sf
- Short- or long-term opportunity
- Available now

This sublease opportunity represents 10,198 sf of modern and quality office space overlooking the Northwest Arm. Situated in the west end of Halifax, near the Armdale Rotary, Tower 1 is part of Manulife's Business Campus and offers quick and direct access to all ends of the Peninsula, to Highway 102, the bridges, public transit, and surrounding amenities.

Property features include some free surface parking for employees and clients, nicely landscaped grounds with outdoor seating, 24-hour security, on-site property management, a fitness centre, full-service cafeteria and daycare.

FOR SUBLEASE

By negotiation

Connie Amero

D 902.431.9967

M 902.802.8480

connie@partnersglobal.com

Geof Ralph

D 902.444.3006

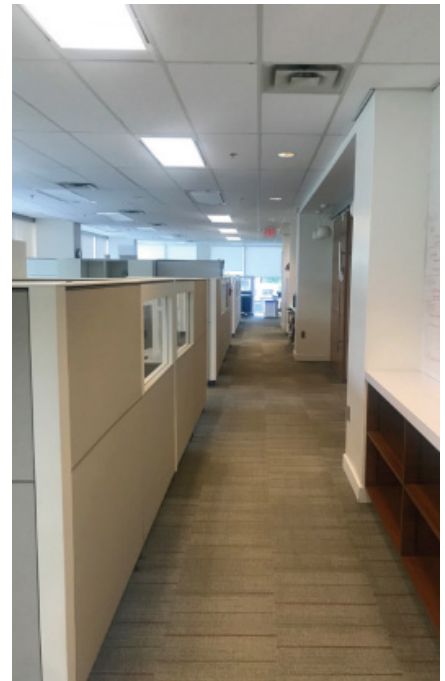
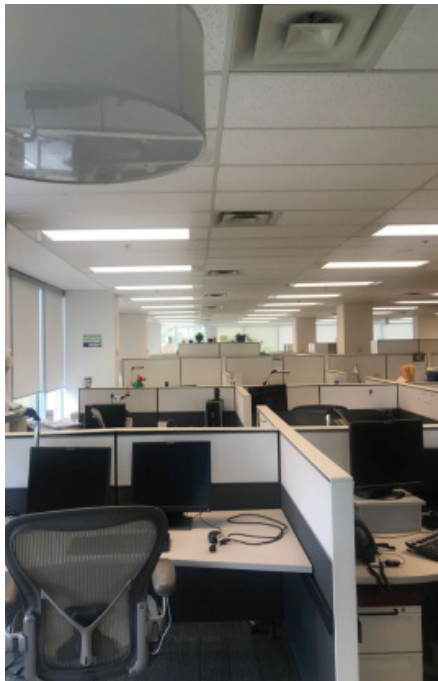
M 902.877.9324

geof@partnersglobal.com

partnersglobal.com



5th Floor, Tower 1 | 2717 Joseph Howe Drive, Halifax, NS

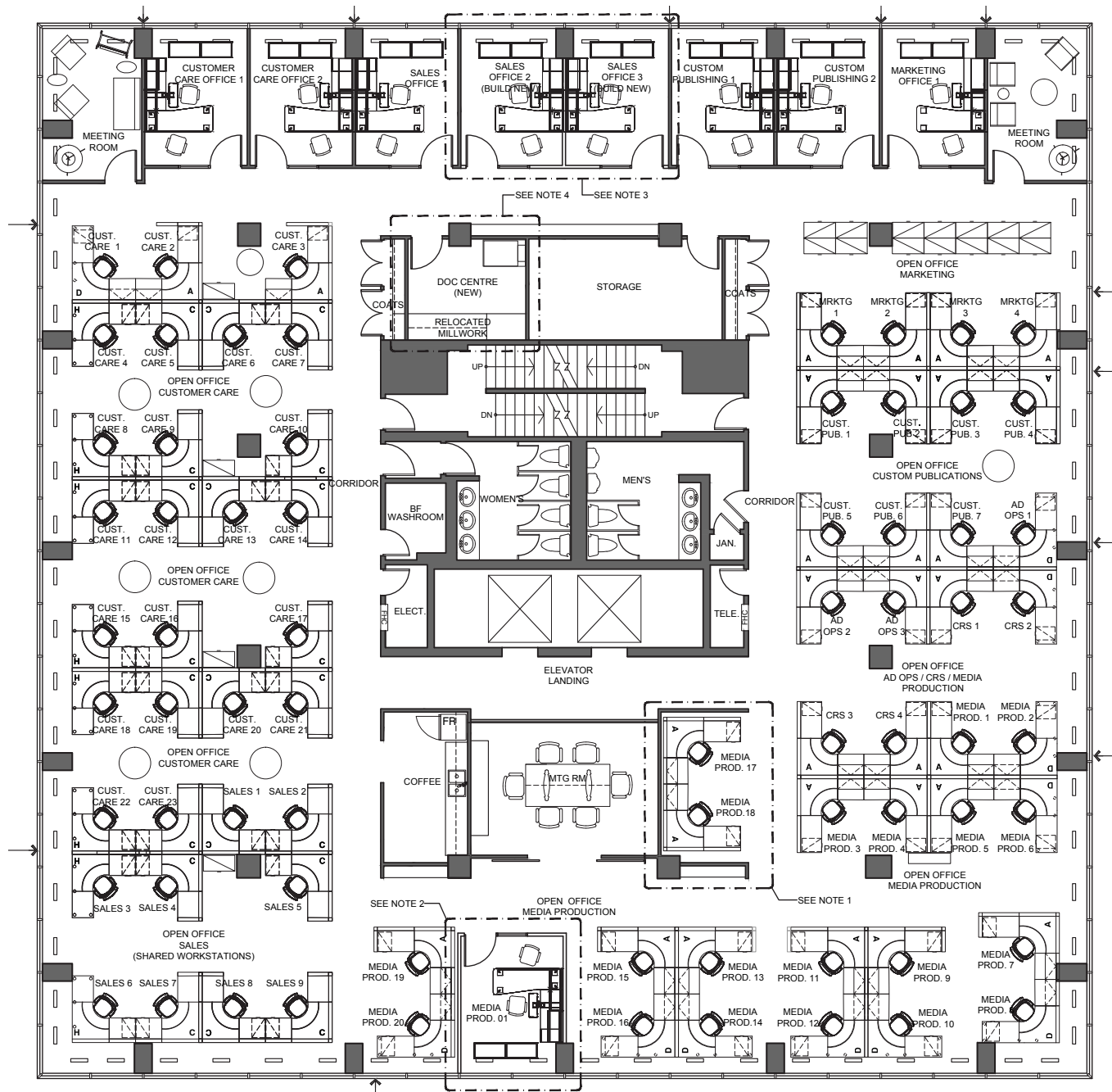


GENERAL

LISTING ID	10227
ADDRESS	2717 Joseph Howe Drive, Halifax, Nova Scotia
LOCATION	West End
BUILDING NAME	Tower 1, Manulife Business Campus
CLASS TYPE	Class A office
BUILDING SIZE	80,092 sf
SIZE AVAILABLE	10,198 sf
FLOOR LOCATION	5 th of 8
AVAILABILITY	Immediately
PARKING	Some on-site surface stalls negotiable
BASE RENT	By negotiation (call for details)
2020 CAM & REALTY TAX	\$14.36 psf (estimate)
NOTES	Option to include all remaining furniture

5th Floor, Tower 1 | 2717 Joseph Howe Drive, Halifax, NS

FLOOR PLAN



Highway 102

Mt Olivet Cemetery

Halifax Shopping Centre

Westmount Elementary School
Halifax Shopping Centre

Walmart Supercentre

Halifax Shopping Centre Annex

to Downtown



Vesale Club

Armview Restaurant & Lounge

Armdale Rotary

Best Western Plus
Chocolate Lake

Northwest Arm

Horseshoe Island Park

Euro Pizza

Chocolate Lake

Chocolate Lake Park & Beach

Connie Amero
D 902.431.9967
M 902.802.8480
connie@partnersglobal.com

Geof Ralph
D 902.444.3006
M 902.877.9324
geof@partnersglobal.com

Partners Global Corporate Real Estate (Partners Global) and its agents and affiliates do not warrant, represent or guarantee the accuracy, completeness or validity of the information provided herein. Parties interested in the property are to conduct their own independent investigations to determine the suitability of the property for their intended use and are strongly urged to discuss the property with their professional advisors. Partners Global expressly disclaims any liability arising out of any errors and omissions in the information. Prospective clients should not confine themselves to the contents but should make their own enquiries to satisfy themselves in all respects. Partners Global will not accept any responsibility should any details prove to be incomplete or incorrect.

partnersglobal.com

