

FOR LEASE

515 KING STREET FREDERICTON, NEW BRUNSWICK

Cornerstone street-level
commercial leasing opportunity
in the iconic NB Power Building



John Bigger

📞 (506) 470-5057

✉️ john@partnersglobal.com

partnersglobal.com



Cornerstone street-level commercial leasing opportunity in the iconic NB Power Building

Centrally located in the heart of the city, surrounded by shopping, dining, culture, business, and more, 515 King Street represents the opportunity to add your organization's name to Downtown Fredericton's historic business legacy.

Boasting 6,856 sf of bright commercial space, complemented by vaulted ceilings and abundant natural light, this space provides a functional and inspiring atmosphere situated in the ideal location. Call the listing agent today to book a tour as this opportunity is sure not to last long.



6,856 sf

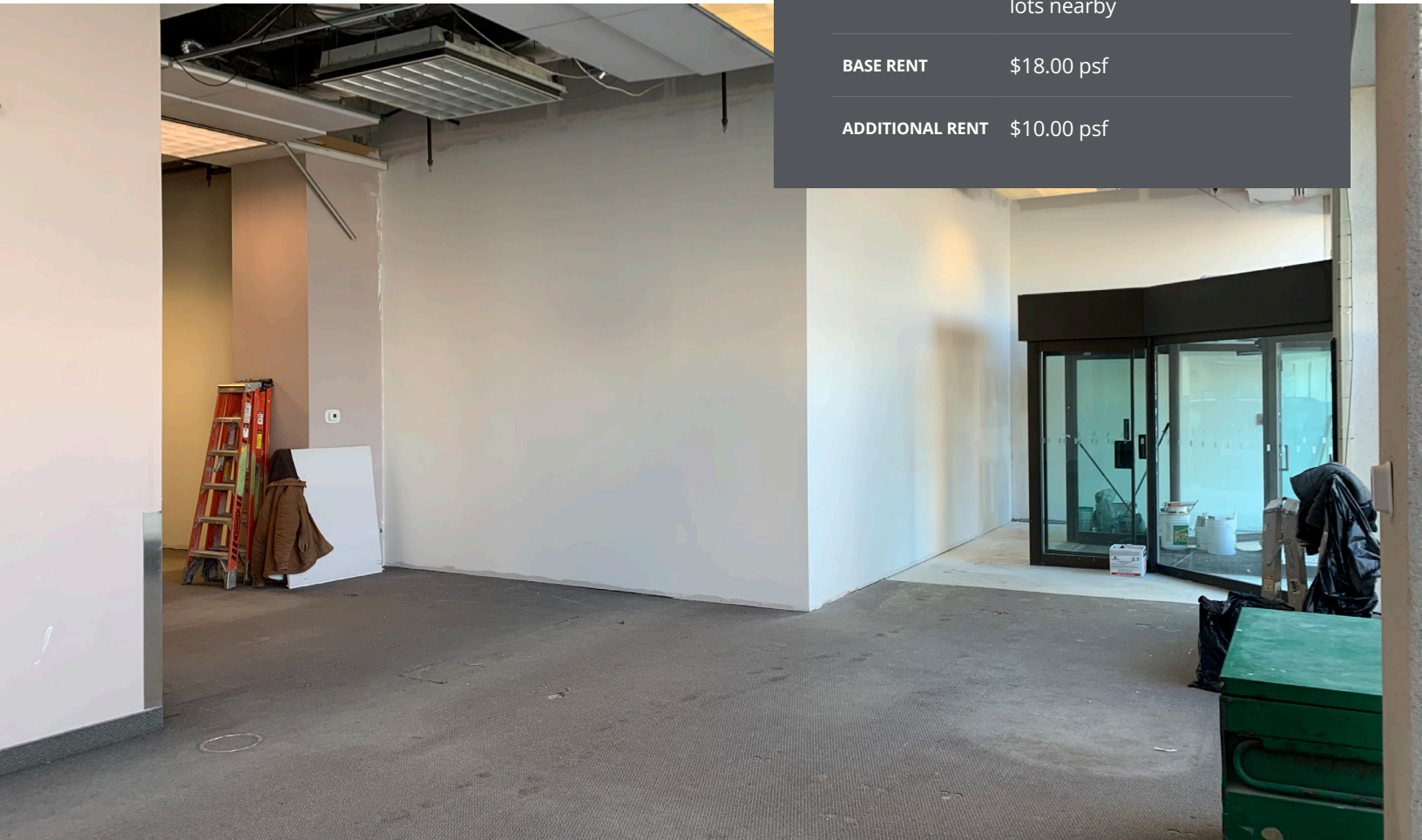


Street-Level,
Open Concept
Design



Central
Downtown
Location

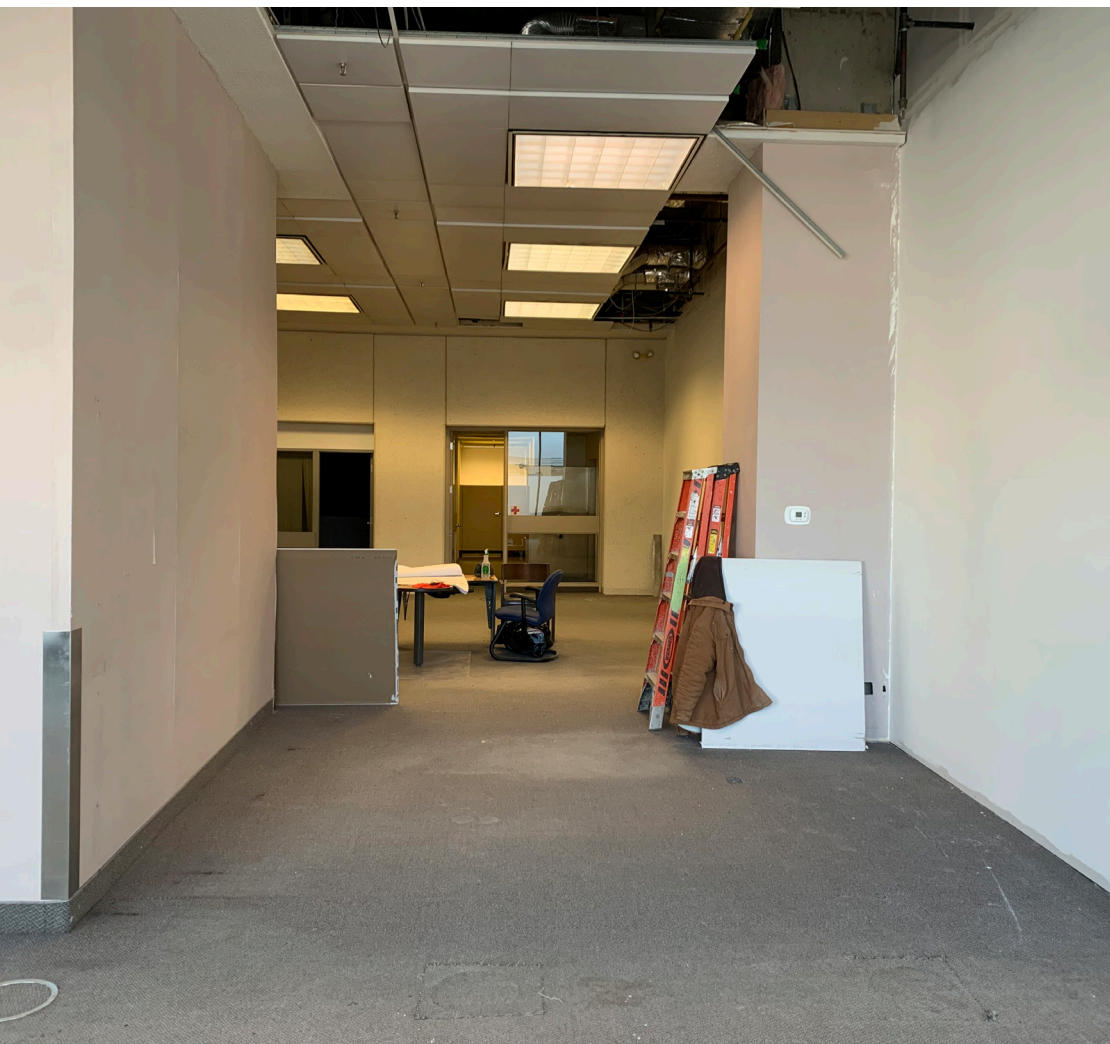
LISTING ID	25183
ADDRESS	515 King Street
LOCATION	Downtown Fredericton
PROPERTY TYPE	Commercial
ZONING	City Centre, which permits many uses including office, fitness centre, medical, legal, professional establishment or many others
SIZE AVAILABLE	6,856 sf
FLOOR LOCATION	Ground floor (street level)
AVAILABILITY	Immediately
PARKING	No parking included with this lease, but it is available in various public and private lots nearby
BASE RENT	\$18.00 psf
ADDITIONAL RENT	\$10.00 psf

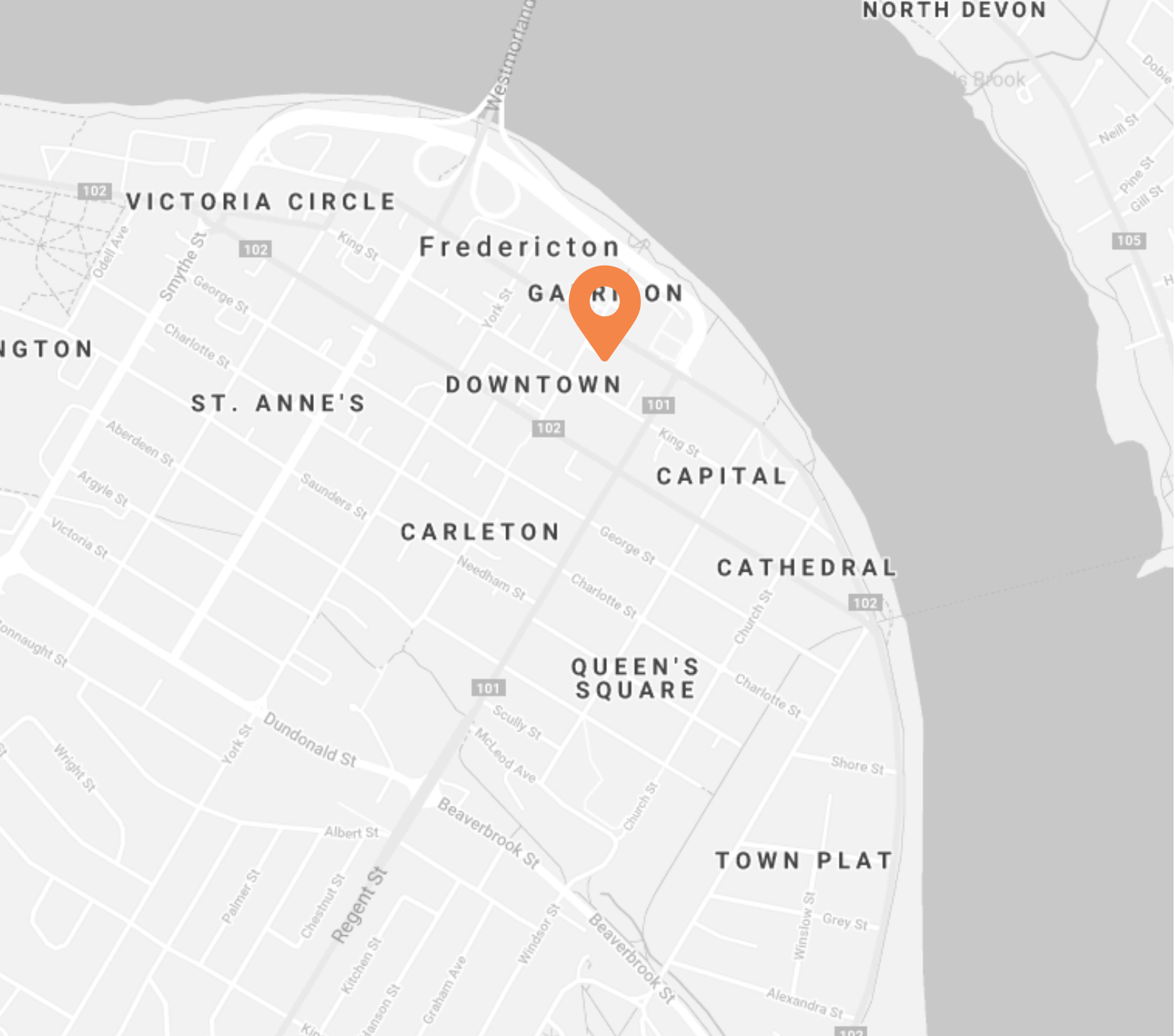


515 KING STREET | FREDERICTON, NEW BRUNSWICK

- ✓ 6,856 sf space available
- ✓ Vaulted ceilings
- ✓ Abundant natural light and open-concept design
- ✓ Surrounded by dining, shopping, business and culture
- ✓ Centrally located in the heart of the city
- ✓ City Centre zoning designation permits many uses
- ✓ Parking available nearby (not included)
- ✓ Excellent visibility and access







Partners Global Corporate Real Estate (Partners Global) and its agents and affiliates do not warrant, represent or guarantee the accuracy, completeness or validity of the information provided herein. Parties interested in the property are to conduct their own independent investigations to determine the suitability of the property for their intended use and are strongly urged to discuss the property with their professional advisors. Partners Global expressly disclaims any liability arising out of any errors and omissions in the information. Prospective clients should not confine themselves to the contents but should make their own enquiries to satisfy themselves in all respects. Partners Global will not accept any responsibility should any details prove to be incomplete or incorrect.

John Bigger

📞 (506) 470-5057
✉️ john@partnersglobal.com

partnersglobal.com

