

FOR LEASE

2854 AGRICOLA STREET NORTH END, HALIFAX

1,809 sf single tenant commercial
building for lease in the heart
of Halifax's North End



Geof Ralph

📞 (902) 444-3006

📠 (902) 877-9324

✉️ geof@partnersglobal.com

partnersglobal.com



2854 AGRICOLA STREET | NORTH END, HALIFAX

1,809 sf single tenant commercial building for lease in the heart of Halifax's North End

Well situated on the corner of Agricola & Bilby Street in Halifax's North End, is this 1,809 sf commercial building. With professional finishes and a flexible layout over two floors, this well maintained property is ideal for a wide variety of office users.

Your staff & clients will enjoy on-site parking for 6-8 cars, as well as 30 minute street parking directly in front of the building. The building is also located near major transit routes and enjoys incredibly close proximity to countless amenities.

Inside, the building boasts tons of natural light and a modern HVAC system. The current configuration includes two private washrooms (one on each floor), three private offices, a boardroom, reception area, kitchenette, and two large, open work areas.

Contact the listing agent to learn more!



1,809 sf Over
Two Floors



Open Concept
Layout

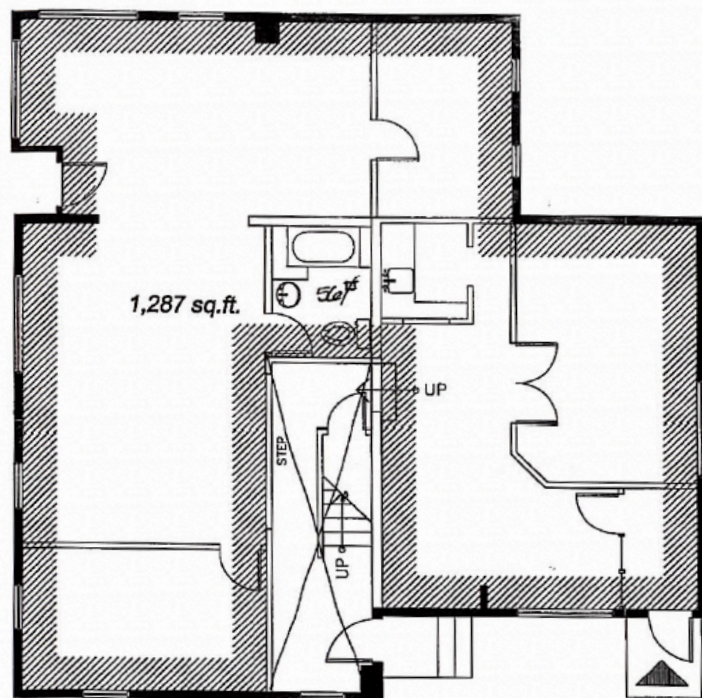


On-site
Parking

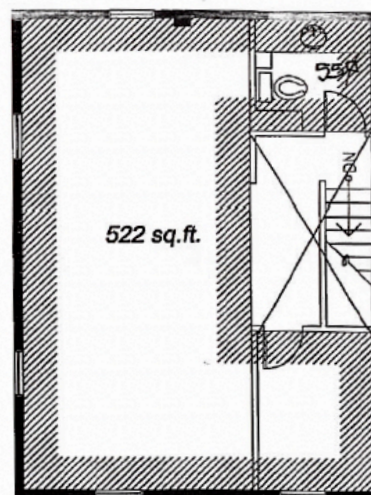
LISTING ID	10340
ADDRESS	2854 Agricola Street
LOCATION	North End
PROPERTY TYPE	Commercial/Office
SIZE AVAILABLE	1,809 sf
AVAILABILITY	February 1, 2023
PARKING	On-site parking for 6-8 cars + 30 minute street parking in front of building
NET RENT	By Negotiation (contact listing agent)
ADDITIONAL RENT	\$15.52 psf + electricity, cleaning & garbage removal



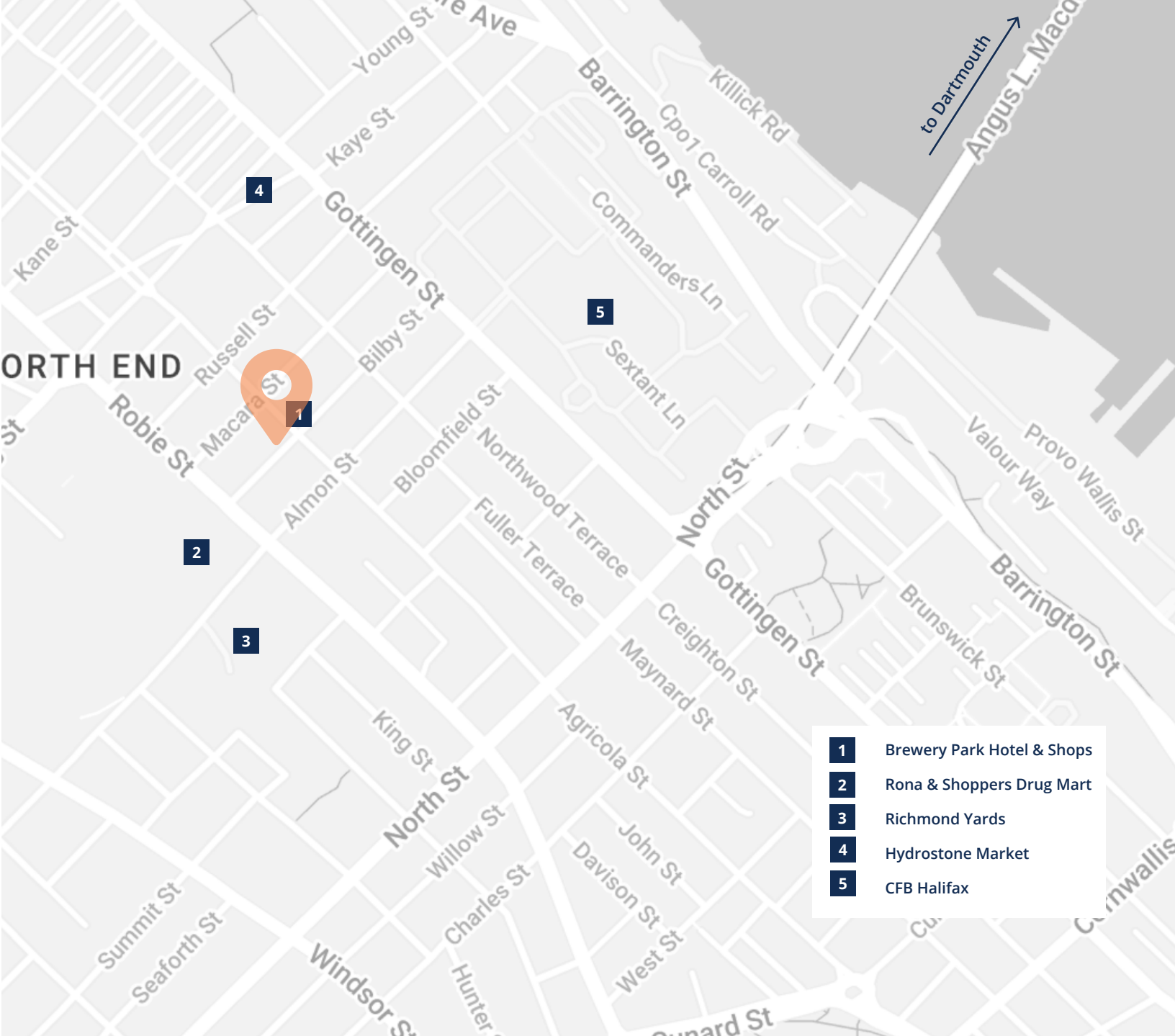
Floor Plan



FIRST FLOOR






SECOND FLOOR



- 1 Brewery Park Hotel & Shops
- 2 Rona & Shoppers Drug Mart
- 3 Richmond Yards
- 4 Hydrostone Market
- 5 CFB Halifax



Geof Ralph

 (902) 444-3006
 (902) 877-9324
 geof@partnersglobal.com

partnersglobal.com

Partners Global Corporate Real Estate (Partners Global) and its agents and affiliates do not warrant, represent or guarantee the accuracy, completeness or validity of the information provided herein. Parties interested in the property are to conduct their own independent investigations to determine the suitability of the property for their intended use and are strongly urged to discuss the property with their professional advisors. Partners Global expressly disclaims any liability arising out of any errors and omissions in the information. Prospective clients should not confine themselves to the contents but should make their own enquiries to satisfy themselves in all respects. Partners Global will not accept any responsibility should any details prove to be incomplete or incorrect.

