

FOR LEASE

MAITLAND TERRACE, 2085 MAITLAND STREET NORTH END, HALIFAX

**Flexible Leasing Opportunities in the
North End's Historic Maitland Terrace**



Geof Ralph

- ☎ (902) 444-3006
- ☎ (902) 877-9324
- ✉ geof@partnersglobal.com

partnersglobal.com



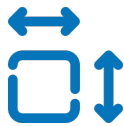
MAITLAND TERRACE, 2085 MAITLAND STREET | NORTH END, HALIFAX

Flexible Leasing Opportunities in the North End's Historic Maitland Terrace

Located in the trendy North End, Maitland Terrace is a 4-story heritage office building with loads of character. Located steps from all shops, services and amenities offered in the North End, this building is also adjacent to downtown Halifax. With well maintained common spaces and ample street parking for clients, Maitland Terrace is the place to be!

The lower level features two bright and character filled office suites, each with two exterior entrances. The first suite is 1,636 sf and features 3 open areas, 3 private offices and a spacious kitchenette. This unit has one assigned parking space and is available immediately. The second suite is 1,445 sf and features a nearly 600 sf open area, as well as 3 private offices, reception area, and a washroom. This unit has one assigned parking space and is also available immediately.

There is an option to combine these two units for a total of 3,081 sf. Contact the listing agent to learn more!



3,081 sf of
Contiguous
Space Available



Close to
Amenities



Lots of Natural
Light

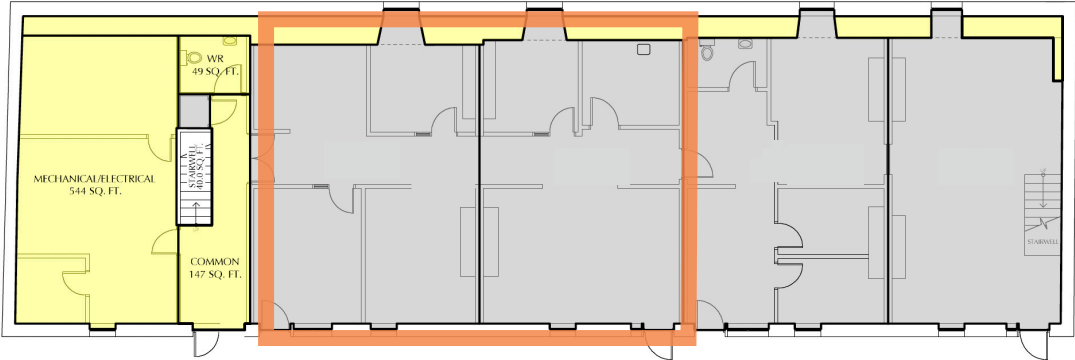
LISTING ID	10319
ADDRESS	2085 Maitland Street
LOCATION	North End
PROPERTY TYPE	Office space
BUILDING NAME	Maitland Terrace
MIN CONTIGUOUS SPACE AVAILABLE	1,445 sf
MAX CONTIGUOUS SPACE AVAILABLE	3,081 sf
FLOOR LOCATION	Lower level
AVAILABILITY	Immediate
PARKING	Up to two assigned parking spaces + street parking
GROSS RENT	\$28.00 psf plus cleaning



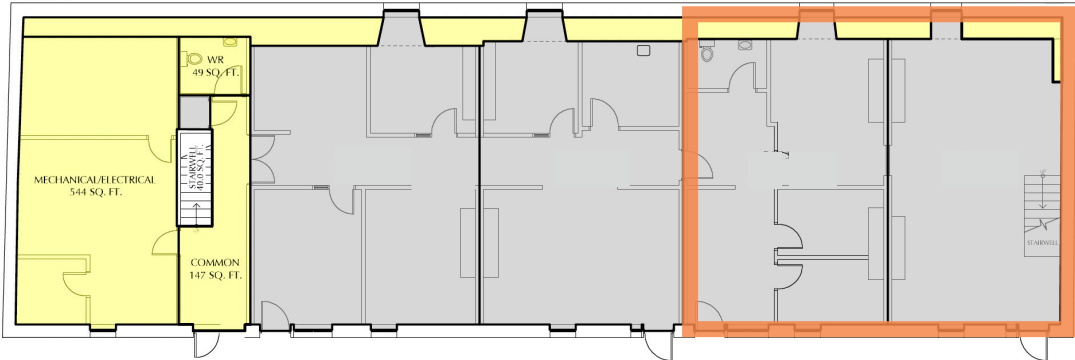
MAITLAND TERRACE, 2085 MAITLAND STREET | NORTH END, HALIFAX

Floor Plan

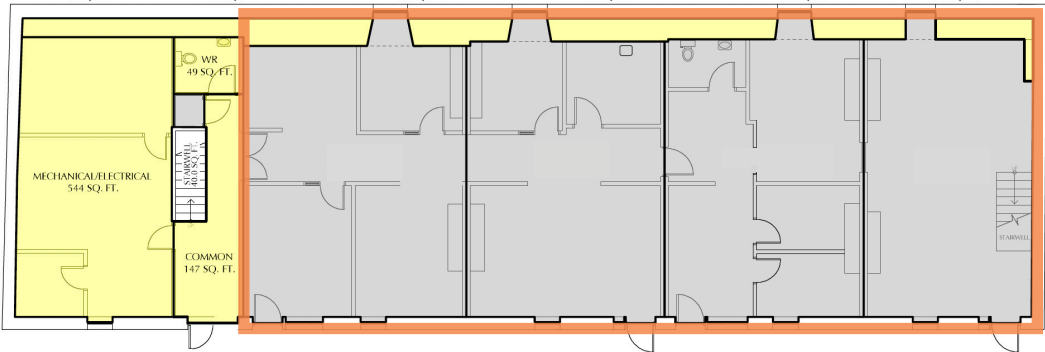
Option 1: 1,636 sf



Option 2: 1,445 sf



Option 3: 3,081 sf -





Two suites available,
1,445 sf & 1,636 sf

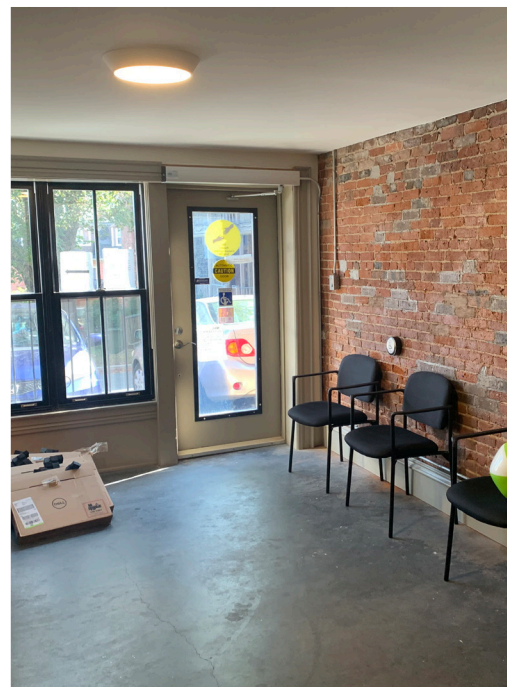
Well Maintained
Common Areas

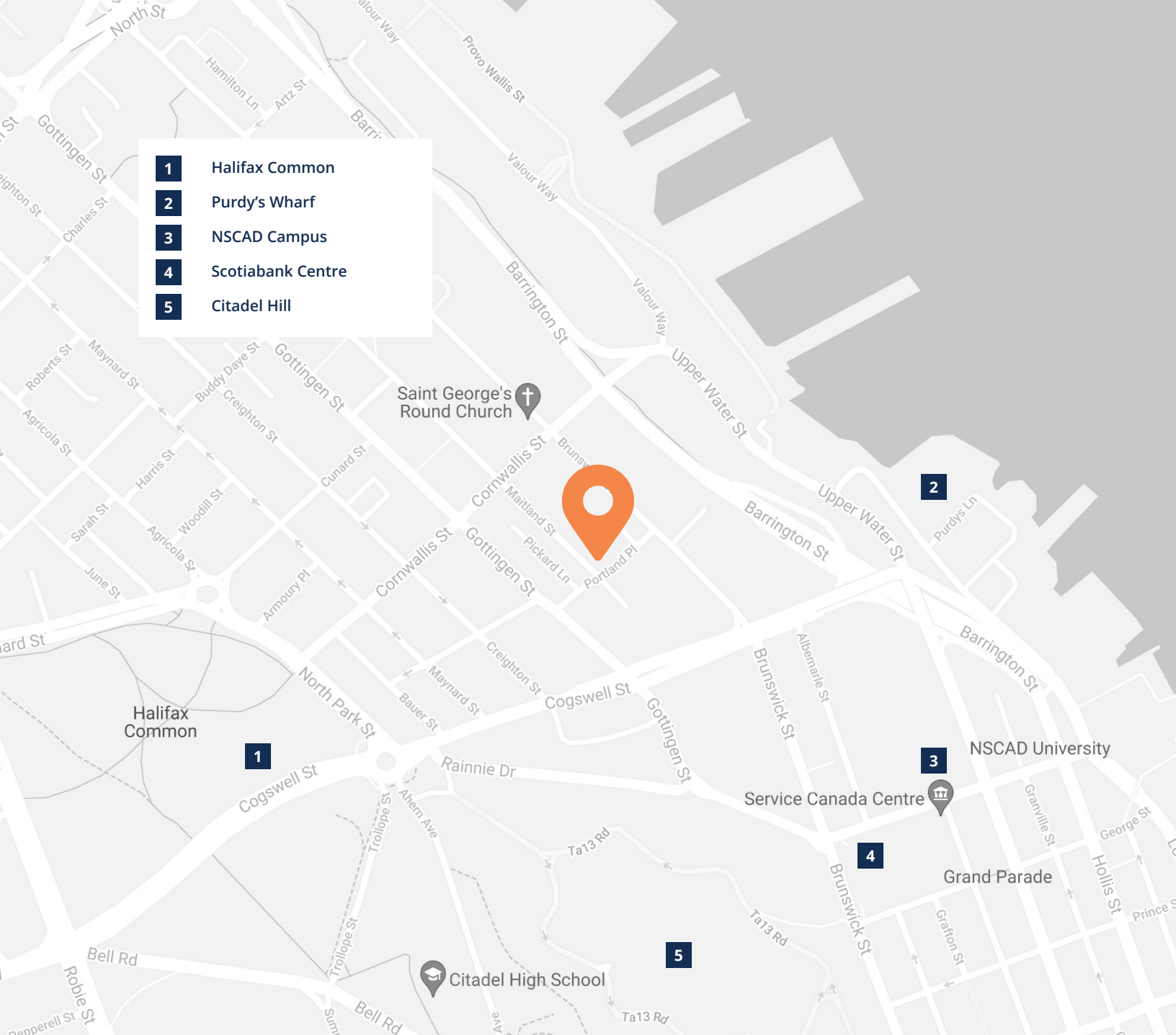
One Assigned Parking
Spot Per Unit + Street
Parking

Character Mouldings

Polished Concrete
Floors

Exposed Brick





- 1** Halifax Common
- 2** Purdy's Wharf
- 3** NSCAD Campus
- 4** Scotiabank Centre
- 5** Citadel Hill



Geof Ralph

☎ (902) 444-3006
 📠 (902) 877-9324
 ✉ geof@partnersglobal.com

partnersglobal.com

Partners Global Corporate Real Estate (Partners Global) and its agents and affiliates do not warrant, represent or guarantee the accuracy, completeness or validity of the information provided herein. Parties interested in the property are to conduct their own independent investigations to determine the suitability of the property for their intended use and are strongly urged to discuss the property with their professional advisors. Partners Global expressly disclaims any liability arising out of any errors and omissions in the information. Prospective clients should not confine themselves to the contents but should make their own enquiries to satisfy themselves in all respects. Partners Global will not accept any responsibility should any details prove to be incomplete or incorrect.

