

**FOR LEASE**

# 130 JOHN SAVAGE DRIVE DARTMOUTH, NOVA SCOTIA

5,941 sf of Industrial Space for  
Lease in Burnside Industrial Park



**Connie Amero**

☎ (902) 431-9967  
📱 (902) 802-8480  
✉ [connie@partnersglobal.com](mailto:connie@partnersglobal.com)

[partnersglobal.com](http://partnersglobal.com)

**Geof Ralph**

☎ (902) 444-3006  
📱 (902) 877-9324  
✉ [geof@partnersglobal.com](mailto:geof@partnersglobal.com)





# 130 JOHN SAVAGE DRIVE, UNIT 5 | DARTMOUTH, NOVA SCOTIA

## 5,941 sf of industrial space for lease in Burnside Industrial Park

This opportunity represents 5,941 sf of industrial space at this functional steel frame and concrete tilt-up building with good curb appeal. 130 John Savage Avenue is LEED Certified, boasting high-efficiency lighting, an ESFR sprinkler system, back up generator, electrical vehicle charging stations and more.

Additional property features include free on-site paved parking, 28' clear heights, and dock level loading. Unit 5 is nicely built out for a retail/industrial user with an open concept reception which is open to the large warehouse area, as well as two enclosed offices, a kitchenette, and two private washrooms.

Contact the listing agents to learn more today!



5,987 SF  
Unit

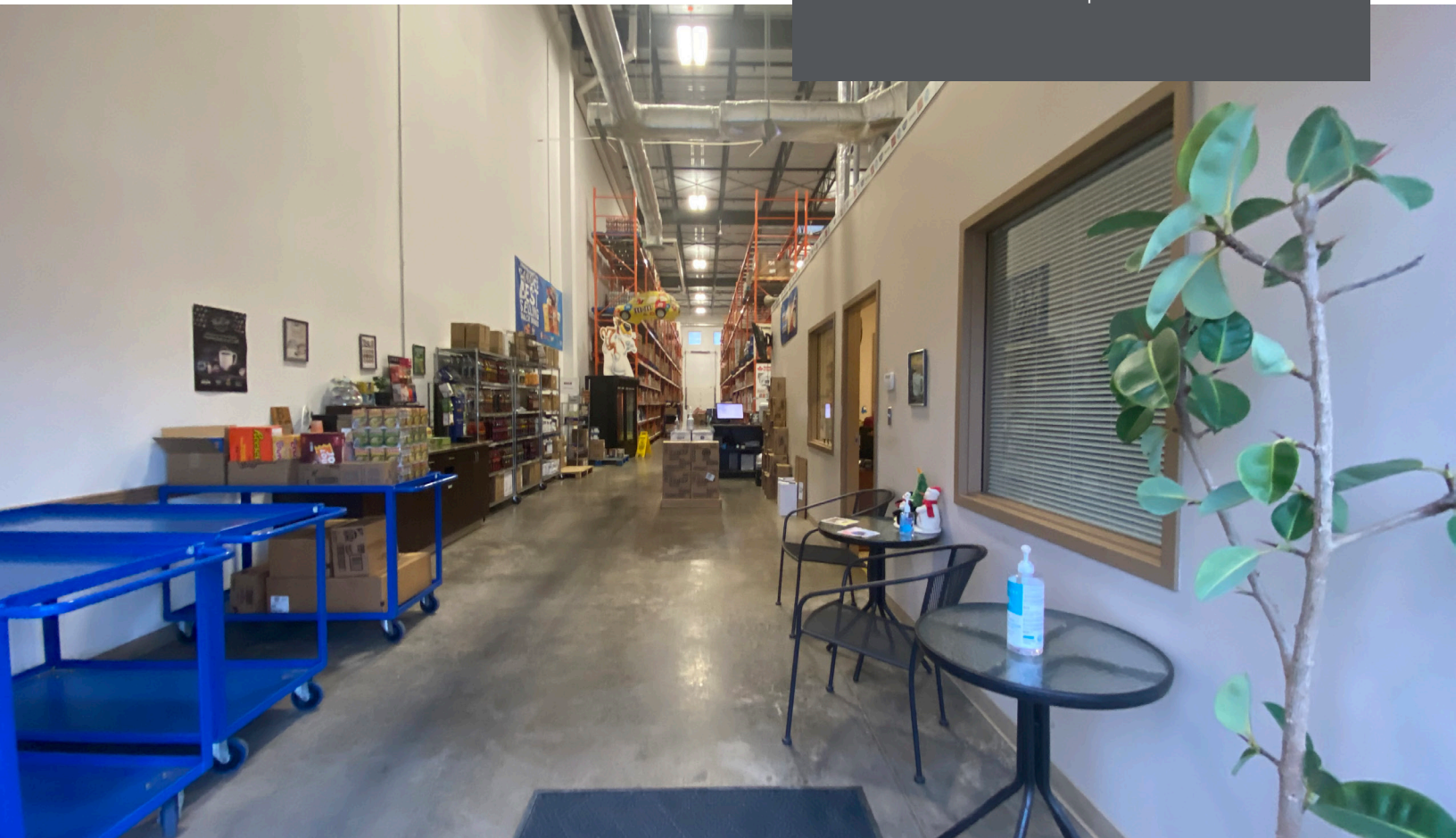


Open Concept  
Space



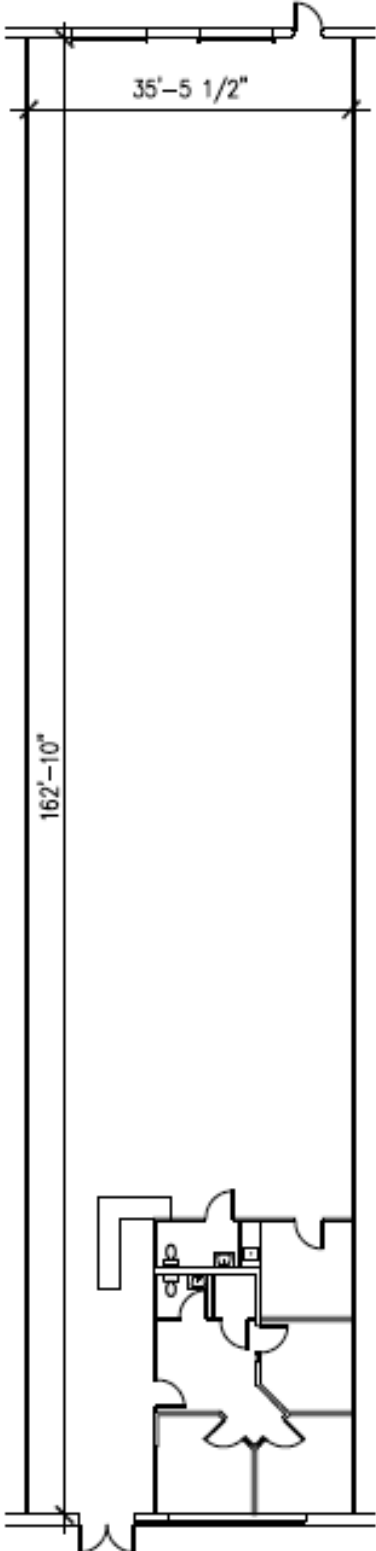
Ample On-site  
Parking

LISTING ID	10338
ADDRESS	130 John Savage Drive
LOCATION	Burnside Industrial Park, Dartmouth
PROPERTY TYPE	Industrial
YEAR BUILT	2011
BUILDING SIZE	91,522 sf
SIZE AVAILABLE	5,941 sf
LOADING	Two (2) dock loading doors
AVAILABILITY	May 1, 2023
PARKING	Ample on-site parking
BASE RENT	Contact listing agent
CAM FEES	\$8.64 psf



130 JOHN SAVAGE DRIVE, UNIT 5 | DARTMOUTH, NOVA SCOTIA

Floor Plan







Two (2) loading 8' x 10'  
dock loading doors

Natural gas heating in  
warehouse area

28' ceiling heights

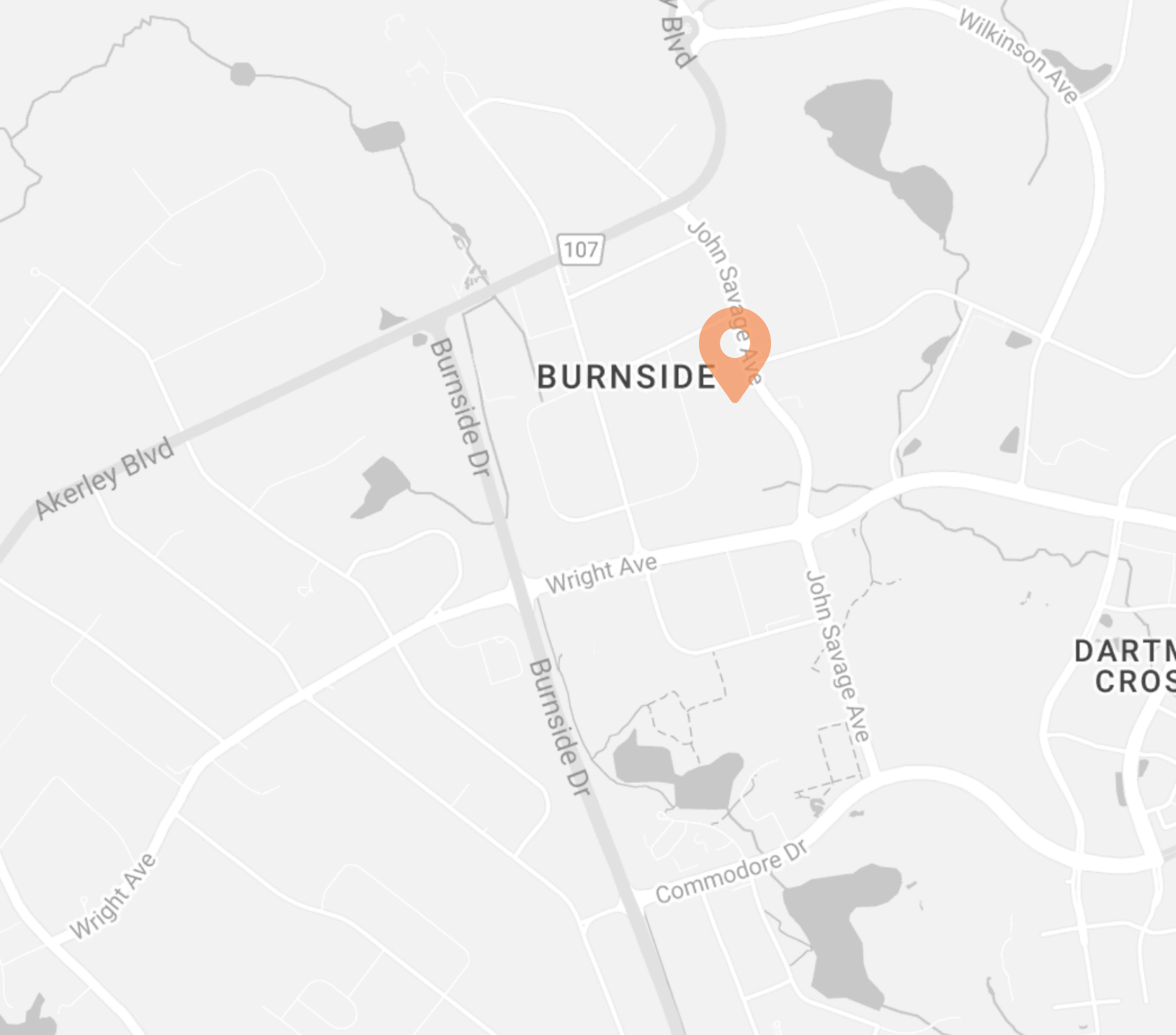
Three (3) private offices

Back up generator

Two (2) private  
washrooms







**Connie Amero**

☎ (902) 431-9967  
📱 (902) 802-8480  
✉ [connie@partnersglobal.com](mailto:connie@partnersglobal.com)



**Geof Ralph**

☎ (902) 444-3006  
📱 (902) 877-9324  
✉ [geof@partnersglobal.com](mailto:geof@partnersglobal.com)

Partners Global Corporate Real Estate (Partners Global) and its agents and affiliates do not warrant, represent or guarantee the accuracy, completeness or validity of the information provided herein. Parties interested in the property are to conduct their own independent investigations to determine the suitability of the property for their intended use and are strongly urged to discuss the property with their professional advisors. Partners Global expressly disclaims any liability arising out of any errors and omissions in the information. Prospective clients should not confine themselves to the contents but should make their own enquiries to satisfy themselves in all respects. Partners Global will not accept any responsibility should any details prove to be incomplete or incorrect.

[partnersglobal.com](http://partnersglobal.com)

