

NOVA SCOTIA LISTING REPORT

April 2023

Partners Global Corporate Real Estate Inc.

1801 Hollis Street, Suite 1420, NS B3J 3N4

☎ (902) 444-4004

✉ halifax@partnersglobal.com



FEATURED LISTINGS



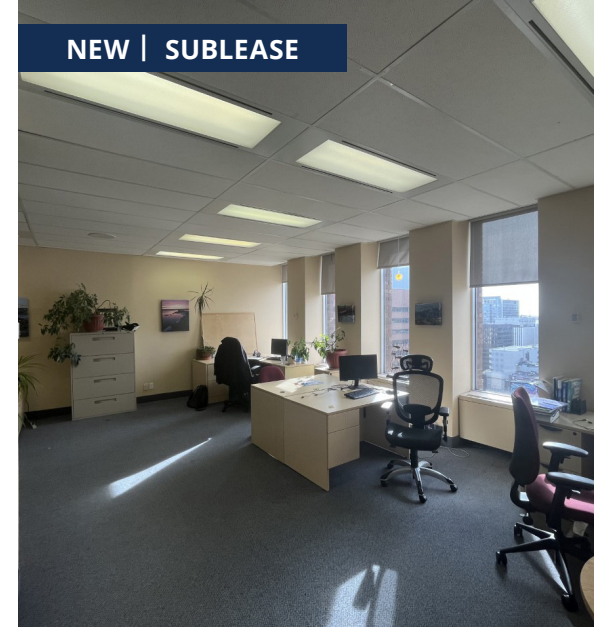
1558 BARRINGTON STREET, HALIFAX, NS

Size	17,976 sf building, 5,408 sf lot
Price	Contact Listing Agent
Features	<ul style="list-style-type: none"> • Three buildings on one property in the heart of downtown Halifax • Mixed use opportunity with four (4) retail/restaurant spaces, one (1) office space and eight (8) apartments • +/- 220 ft of frontage on three streets
Contact	Geof Ralph



1135 HIGHWAY 2, LANTZ, NS

Size	Up to 9,000 sf
Price	Contact Listing Agent
Features	<ul style="list-style-type: none"> • Up to 9,000 sf for pre-lease in new construction commercial building • High visibility location on Highway 2, with close proximity to Highway 102 • Ample Parking • Entire building can be leased, or smaller units demised
Contact	Connie Amero



5251 DUKE STREET, HALIFAX, NS

Size	1,392 sf
Price	Contact Listing Agent
Features	<ul style="list-style-type: none"> • Bright & modern downtown office space for sublease • Open reception/work area, two (2) meeting rooms and one (1) private office • Excellent city views • Head lease expires January 31st, 2026 • Available with 30 days notice
Contact	Geof Ralph

FOR LEASE | OFFICE



NEW | SUBLEASE

5251 Duke Street, Halifax

1,392 sf

Price by negotiation (contact listing agent)

1,392 sf sublet in Duke Tower; available until January 31, 2026; excellent layout with open concept reception/work area; two (2) meeting rooms and one (1) office; available within 30 days

Contact Geof Ralph



SUBLEASE

15 Dartmouth Road, Bedford

1,618 sf

\$23.25 psf (gross)

Fully furnished office space for sublease in Wardour Centre; open work area, four private offices & boardroom; head-lease expires April 30, 2025

Contact Geof Ralph



2854 Agricola Street, Halifax

1,809 sf

Price by negotiation (contact listing agent)

Entire boutique office building for lease in Halifax's North End; on-site parking for 6-8 cars; flexible layout; professional finishes throughout

Contact Geof Ralph



7020 Mumford Road, Halifax

2,650 sf - 7,950 sf

Price by negotiation (contact listing agent)

Three floors available, each 2,650 sf; quality finishes & mix of private offices and open space; floors can be rented together or separately; building serviced by elevator

Contact Geof Ralph



INCENTIVES

1801 Hollis Street, Halifax

1,397 sf - 10,350 sf

Price by negotiation (contact listing agent)

Move-in ready, furnished model suites, fully built-out space, or build to suit options at this Class A office tower downtown; **broker incentive program!**

Contact Geof Ralph



2085 Maitland Street, Halifax

1,445 sf

\$28.00 psf (gross)

Available space on lower level, comprising 1,445 sf; character features throughout; lots of natural light; one parking space available

Contact Geof Ralph



250 Brownlow Ave, Dartmouth

Suite 2, 19,034 sf

Price by negotiation (contact listing agent)

19,034 sf office space in City of Lakes Business Park; access to shared loading area; currently configured as a mix of private offices, meeting rooms & large open area; high visibility location

Contact Geof Ralph & Connie Amero



SUBLEASE

33 Alderney Drive, Dartmouth

8th floor, 5,849 sf

Price by negotiation (contact listing agent)

Sublease opportunity in the heart of downtown Dartmouth; stunning harbour views; flexible layout with mix of private offices, meeting rooms and open work area

Contact Geof Ralph

FOR LEASE | OFFICE



6080 Young Street, Halifax

1,739 sf - 3,900 sf

Price by negotiation (contact listing agent)

Two prime office suites for sublease in Halifax's North End; well laid-out spaces with some furniture available; professionally managed building with free parking and easy access

Contact Geof Ralph



33 Alderney Drive, Dartmouth

7th Floor, 3,772 sf

Price by negotiation (contact listing agent)

Sublease opportunity in downtown Dartmouth's Belmont House; option to demise suite into two smaller units; bright and airy space with fantastic views

Contact Geof Ralph



49 Cornwallis Street, Kentville

2,700 sf

Price by negotiation (contact listing agent)

Office space for lease in downtown Kentville; attractive building with great access and profile; 14' ceiling height

Contact Connie Amero



2717 Joseph Howe Drive, Halifax

5th Floor: 10,198 sf

Price by negotiation (contact listing agent)

Short- or long-term modern and quality office space overlooking the Northwest Arm; option to include remaining furniture; on-site property management; full-service cafeteria and daycare

Contact Geof Ralph & Connie Amero

FOR LEASE | INDUSTRIAL



130 John Savage Drive, Dartmouth

5,941 sf

Price by negotiation (contact listing agent)

5,941 sf open concept industrial space in Burnside industrial park; 28' clear heights; two (2) dock loading doors; two private offices, two washrooms & kitchenette

Contact Connie Amero & Geof Ralph

FOR LEASE | COMMERCIAL



1135 Highway 2, Lantz

Up to 9,000 sf

Price by negotiation (contact listing agent)

Up to 9,000 sf of commercial space for pre-lease; new construction building with excellent visibility; close to Highway 102; entire building can be leased or smaller spaces demised

Contact Connie Amero



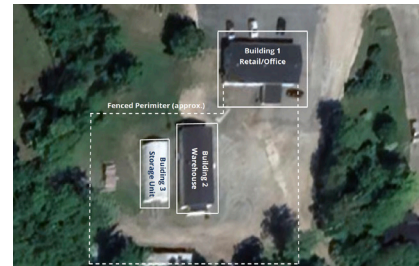
867 Randolph Road, Waterville

3,000 sf - 27,100 sf

Price by negotiation (contact listing agent)

Six (6) storage structures connected by centre corridor; spaces have heat & power; individual structures can be rented separately, or entire site can be rented to one tenant; secure premises

Contact Connie Amero



1143 Highway 325, Maitland

5,250 sf

Price by negotiation (contact listing agent)

Mixed-use opportunity 10 minutes from Bridgewater; 3 buildings for lease on property, totaling 5,650 sf; retail/office building, warehouse building & additional storage building; fenced yard

Contact Connie Amero



380 Pleasant Street, Dartmouth

1,233 sf

\$29.48 psf (gross)

Commercial leasing opportunity in Dartmouth's Woodside neighbourhood; flexible layout with two private offices and large open area; lots of natural light; ample onsite parking

Contact Connie Amero



8944 Commercial Street, New Minas

1,020 sf

Price by negotiation (contact listing agent)

Retail leasing opportunity in New Minas Plaza; unit features flexible layout & lots of natural light; ample on-site parking and great signage opportunities

Contact Connie Amero



8990 Highway 7, Head of Jeddore

2,500 sf

Price by negotiation (contact listing agent)

Retail lease opportunity in Forest Hill Shopping Centre; end unit with ample parking; high visibility location with signage opportunities; lots of natural light and freshly painted interior

Contact Geof Ralph



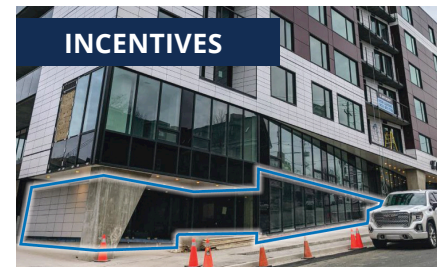
448 Main Street, Kentville

4,000 sf

Price by negotiation (contact listing agent)

Situated in Kentville's charming downtown; garage and storage space available for lease; ample on-site parking; supported by General Commercial (C-1) Zoning

Contact Geof Ralph



5426 Portland Place, Halifax

+/- 2,600 sf

Price by negotiation (contact listing agent)

North End commercial space at The Anthony; suitable for a variety of uses; several large front windows; available immediately for tenant construction, **leasing incentives available!**

Contact Geof Ralph

FOR SALE | ALL CLASSES



1240 Bedford Highway, Bedford

1,968 sf building on 5,600 sf lot

\$675,000

1,968 sf commercial building on Bedford Highway; formally commercial/residential mix with potential to convert back; parking for 8-10 cars; +/- 100 feet of street frontage; excellent visibility

Contact Ian Stanley



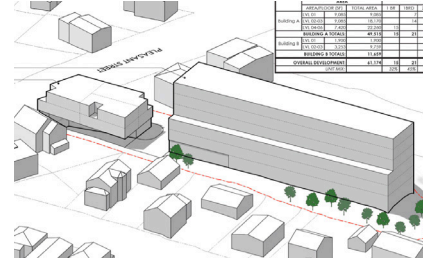
6265 Quinpool Road, Halifax

7,958 sf building on 5,848 sf lot

\$2,200,000

Professionally managed 3 storey walk-up office building on busy Quinpool Rd; fully leased; property has eight (8) parking spots and frontage on Yale St to the rear

Contact Ian Stanley



233 Pleasant Street, Dartmouth

27,000 sf redevelopment site

\$2,500,000

Well positioned 27,000 sf redevelopment site located in Dartmouth's Woodside neighborhood; preliminary plans for a 61,174 sf mixed used development with 47 residential

Contact Geof Ralph



137 Chain Lake Drive, Halifax

23,782 sf building on 3.34 acres

Contact listing agent

Well-maintained single storey, multi-tenanted office building within Bayers Lake Business Park; ideally suited to partial owner-occupier; ample surface parking

Contact Ian Stanley



3866/3874 Hwy 3, Barrington Passage

2 office/industrial buildings on 13.2 acres

\$1,895,000

Two buildings leased to government tenants; building one - 2,137 sf paramedic base; building two - 9,900 sf government office/industrial building with fenced yard; large paved parking

Contact Connie Amero



129/131 King Street, Shelburne

2 office/industrial buildings on 1.5 acres

\$450,000

Two buildings leased to government tenants; building one - 2,641 sf paramedic base; building two - 1,420 government office building; corner lot in high traffic location

Contact Connie Amero



22 St Vincent Street, Stellarton

12 unit building on 20,000 sf lot

\$975,000

Well located walk-up apartment building featuring twelve (12), two (2) bedroom units; some recent renovations; paved parking

Contact Ian Stanley



Highway 244, Auld's Cove

646 acres

\$1,200,000

646 acres of land for sale in Auld's Cove, overlooking the Canso Causeway; variable zoning advantages; woods road through most of property; water views

Contact Connie Amero

FOR SALE | ALL CLASSES



Dutch Village Rd, Halifax

Two parcels totalling 14,760 sf

Contact listing agent for details

High traffic location; approved as-of-right for a 40 unit residential development; preliminary plans available; site currently consists of two occupied multi unit buildings

Contact Geof Ralph



9154 Commercial Street, New Minas

4,038 sf building on 41,125 sf lot

\$1,100,000

Industrial building on one of Annapolis Valley's busiest thoroughfares; 5 garage bays; ample on-site parking; currently leased to excellent tenant

Contact Geof Ralph



Park St Development Land, Kentville

137 Acres

\$3,100,000

4 PIDs totalling 137 acres; located between Kentville Business Park & residential subdivision; currently zoned Industrial; included master plan for residential/commercial community

Contact Connie Amero



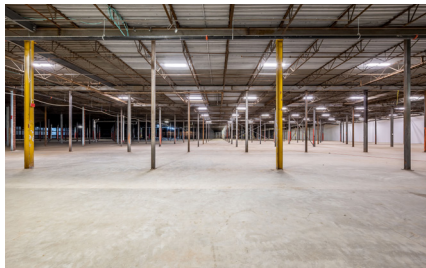
Lot 2A, 450 Highway 2, Enfield

5.79 acres

Price by negotiation (contact listing agent)

Commercial development land located in the growing community of Enfield; Zoned a combination of R2 and MC, allowing for various development options

Contact Geof Ralph



114 Acadia Ave, Stellarton

255,000 sf prime industrial

\$8,500,000

Cutting-edge industrial space on over 12.5 acres of land; built in 1965 and completely renovated in 2017

Contact Connie Amero & Geof Ralph

Click the property photos for more information

CONTACT US

Brian Toole

Principal, Tenant Advisory

- ☎ (902) 476-6898
- ✉ brian@partnersglobal.com

Ian Stanley

Broker / Principal, Investments & Capital Markets

- ☎ (902) 229-7100
- ✉ ian@partnersglobal.com

Geof Ralph

Executive Vice President

- ☎ (902) 877-9324
- ✉ geof@partnersglobal.com

Connie Amero

Associate Broker / Senior Vice President, Sales & Leasing

- ☎ (902) 802-8480
- ✉ connie@partnersglobal.com

Jacquelyn Moriarty

Investments & Capital Markets

- ☎ (902) 440-3937
- ✉ jacquelyn@partnersglobal.com

Erin Crosby

Senior Advisor, Tenant Advisory

- ☎ (902) 877-1849
- ✉ erin@partnersglobal.com

Joan MacKinnon

Executive Administrator

- ☎ (902) 444-4004
- ✉ joan@partnersglobal.com

Matt Ross

Sales & Marketing Coordinator

- ☎ (902) 324-1101
- ✉ matt@partnersglobal.com

Partners Global Corporate Real Estate (Partners Global) and its agents and affiliates do not warrant, represent or guarantee the accuracy, completeness or validity of the information provided herein. Parties interested in the property are to conduct their own independent investigations to determine the suitability of the property for their intended use and are strongly urged to discuss the property with their professional advisors. Partners Global expressly disclaims any liability arising out of any errors and omissions in the information. Prospective clients should not confine themselves to the contents but should make their own enquiries to satisfy themselves in all respects. Partners Global will not accept any responsibility should any details prove to be incomplete or incorrect.