

NEW BRUNSWICK LISTING REPORT

April 2023

Partners Global Corporate Real Estate

380 Alison Blvd, Suite 2, Fredericton, NB

☎ (506) 453-7880

✉ fredericton@partnersglobal.com



FEATURED LISTINGS

FOR LEASE | OFFICE



2398 ROUTE 102, LINCOLN

Size	2,373 sf - 6,373 sf
Price	\$19.95 psf (gross, utilities included)
Features	<ul style="list-style-type: none"> • Two main floor office spaces for lease, 2,373 sf and 4,000 sf • Units can be combined for 4,000 sf • Recently renovated; quality finishes • 12 mins to downtown Fredericton

Contact John Bigger

FOR SALE | LAND



642 UNION STREET, FREDERICTON

Size	Two lots totaling 16,297 sf
Price	\$199,500
Features	<ul style="list-style-type: none"> • Two lots on opposite corners • Development agreement in place for 2 storey mixed use building on one lot and parking on adjacent lot

Contacts Mark LeBlanc

FOR LEASE | OFFICE



214 BRUNSWICK STREET, FREDERICTON

Size	1,664 sf - 3,468 sf
Price	By negotiation (contact listing agent)
Features	<ul style="list-style-type: none"> • Two second floor office spaces for lease, 1,664 and 1,794 sf • Suites can be combined for +/- 3,500 sf • Vacant and ready for tenant improvement • Up to 4 parking spaces available

Contact John Bigger

FOR LEASE | ALL CLASSES



2398 Route 102, Lincoln

Up to 6,373 sf

\$19.95 psf (gross, utilities included)

Office/Medical Clinic Property

Two office units available; 2,373 sf & 4,000 sf; 12 mins from downtown Fredericton; quality finishes

Contact John Bigger



214 Brunswick Street, Fredericton

Up to +/-3,500 sf

Price by negotiation (contact listing agent)

Office Property

Two office suites available; each approx 1,700 sf; can be combined for 3,500 sf; space ready for tenant improvement

Contact John Bigger



364 Argyle Street, Fredericton

6,500 sf

\$29.00 psf (gross)

Office Property

Architecturally renovated office space for sublet; fully furnished; large open work spaces & collaborative areas

Contact Mark LeBlanc



385 Wilsey Road, Fredericton

1,290 sf

\$11.76 psf (gross)

Industrial Property

Warehouse space with small enclosed office; grade level loading door; 12' ceilings; ample parking & loading area

Contact John Bigger



385 Wilsey Road, Fredericton

1,500 sf

\$11.76 psf (gross)

Industrial Property

Warehouse space with two offices; grade level loading door; 12' ceilings; ample parking & loading area

Contact John Bigger



245 Hilton Road, Fredericton

3,892 sf

\$12.92 psf (gross)

Industrial Property

Recently renovated commercial space; one (1) grade level loading door; ample parking & loading area

Contact John Bigger



140 Alison Boulevard, Fredericton

3,450 sf

\$14.09 psf plus utilities

Retail/Industrial Property

Retail/warehouse space; grade level loading; 18' ceilings; ample parking & loading area

Contact John Bigger



515 King Street, Fredericton

6,856 sf

\$18.00 psf (net)

Office Property

Downtown, wheelchair accessible, great visibility and high ceilings; City Centre Zoning

Contact John Bigger

Click the property photos for more information

FOR LEASE | ALL CLASSES



Cyber Centre, Fredericton

5,000 - 31,570 sf

Price by negotiation (contact listing agent)

Office Property

Class A office facility; resilient building design and infrastructure; build-to-suit space; tenant inducements available

Contact Mark LeBlanc & John Bigger



160 Alison Boulevard, Fredericton

3.83 acres

Price by negotiation (contact listing agent)

Build-to-suit

Build-to-suit land development; available for single or multiple tenant occupancy; convenient location

Contact Mark LeBlanc

FOR SALE | ALL CLASSES



SOLD

668 Rue Principale, Neguac

~1,000 sf

\$25,000

Former Canada Post office

Located on Highway 11, a major provincial artery; flexible zoning; rock-solid construction; close to amenities

Contact Mark LeBlanc & Connie Amero



UNDER OFFER

Rainsford Gardens, Fredericton

13.4 acres

\$2,800,000

Land

Development site with approval for 296 units; located in quality residential neighbourhood; master-plan available

Contact Mark LeBlanc



SOLD

464 Golf Club Road, Fredericton

+/- 37 acres

\$7,500,000

Land

Rare development opportunity in Fredericton; approx. 37 cleared acres in residential area minutes to downtown

Contact Mark LeBlanc



SOLD

25 Alison Boulevard

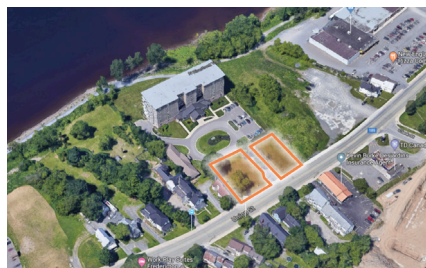
12,000 sf (building), 0.68 acres (lot)

\$2,195,000

Office Building

Two storey office building in Fredericton Business Park; built in 2010; 40+ surface parking stalls

Contact Mark LeBlanc



642 Union Street, Fredericton

Two lots totaling 16,297 sf

\$199,500

Land

Two lots on opposite corners; development agreement for mixed use building on one lot & parking on other

Contact Mark LeBlanc



160 Alison Boulevard, Fredericton

3.83 acres

\$975,000

Land

Prime development land with easy access to downtown Fredericton and the highway; flexible zoning

Contact Mark LeBlanc



Lot 18-7 Divot Drive, Hanwell

4.00 acres

\$895,000

Land

Fully cleared, pad ready lot in Greenview Business Park; plans available for 20,000 sf industrial building

Contact Mark LeBlanc



UNDER OFFER

95 Galloway Street, Moncton

5,334 sf building, 7.00 acre lot

\$1,495,000

Industrial

Industrial building with additional land for future development; nearly 2 acres of paved parking

Contact Mark LeBlanc

FOR SALE | ALL CLASSES



140 Blizzard Street, Fredericton

2.83 acres

\$211,500

Land

Partially cleared lot in Vanier Industrial Park; flexible General Industrial zoning; 280 ft of road frontage

Contact John Bigger



Greer Street, Hanwell

27.80 acres

\$700,000

Land

Development land located in one of New Brunswick's fastest growing areas; Residential Zone Five zoning

Contact Mark LeBlanc



Lot 14-2 Timothy Ave South, Hanwell

3.00 acres

\$225,000

Land

Cleared land located in Greenview Industrial Park; quick access to Trans-Canada Hwy, Industrial Zoning

Contact Mark LeBlanc



Greenview Drive, Hanwell

3.44 acres

\$389,500

Land

Excellent opportunity in Hanwell Industrial Park, easy access to Trans Canada Highway; fantastic visibility

Contact Mark LeBlanc

CONTACT US

Mark LeBlanc

Principal & Broker

📞 (506) 260-7203

✉️ mark@partnersglobal.com

John Bigger

Senior Advisor

📞 (506) 470-5057

✉️ john@partnersglobal.com

Matt Ross

Sales & Marketing Coordinator

📞 (902) 324-1101

✉️ matt@partnersglobal.com

Mona Cockburn

Office Administrator

📞 (506) 453-0067

✉️ mona@partnersglobal.com

Andrew LeBlanc

Executive Coordinator

📞 (506) 478-0011

✉️ andrew@partnersglobal.com

Partners Global Corporate Real Estate (Partners Global) and its agents and affiliates do not warrant, represent or guarantee the accuracy, completeness or validity of the information provided herein. Parties interested in the property are to conduct their own independent investigations to determine the suitability of the property for their intended use and are strongly urged to discuss the property with their professional advisors. Partners Global expressly disclaims any liability arising out of any errors and omissions in the information. Prospective clients should not confine themselves to the contents but should make their own enquiries to satisfy themselves in all respects. Partners Global will not accept any responsibility should any details prove to be incomplete or incorrect.

