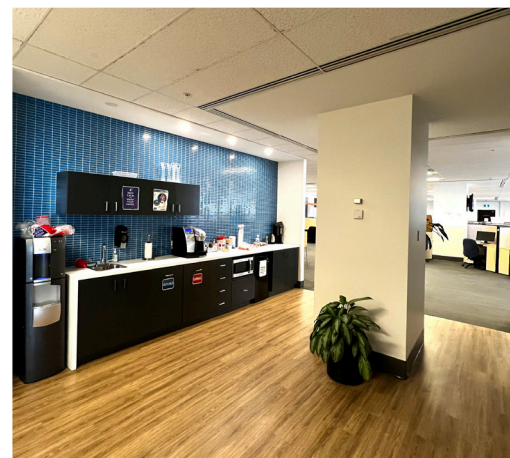
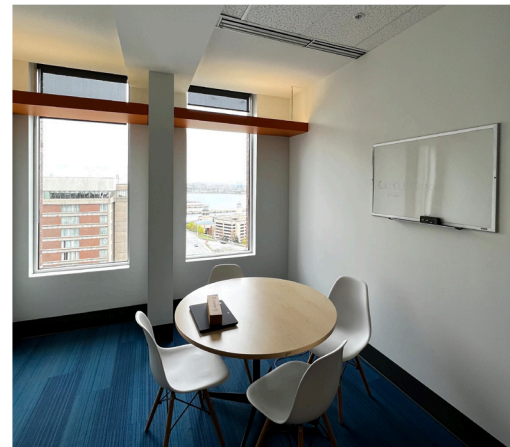
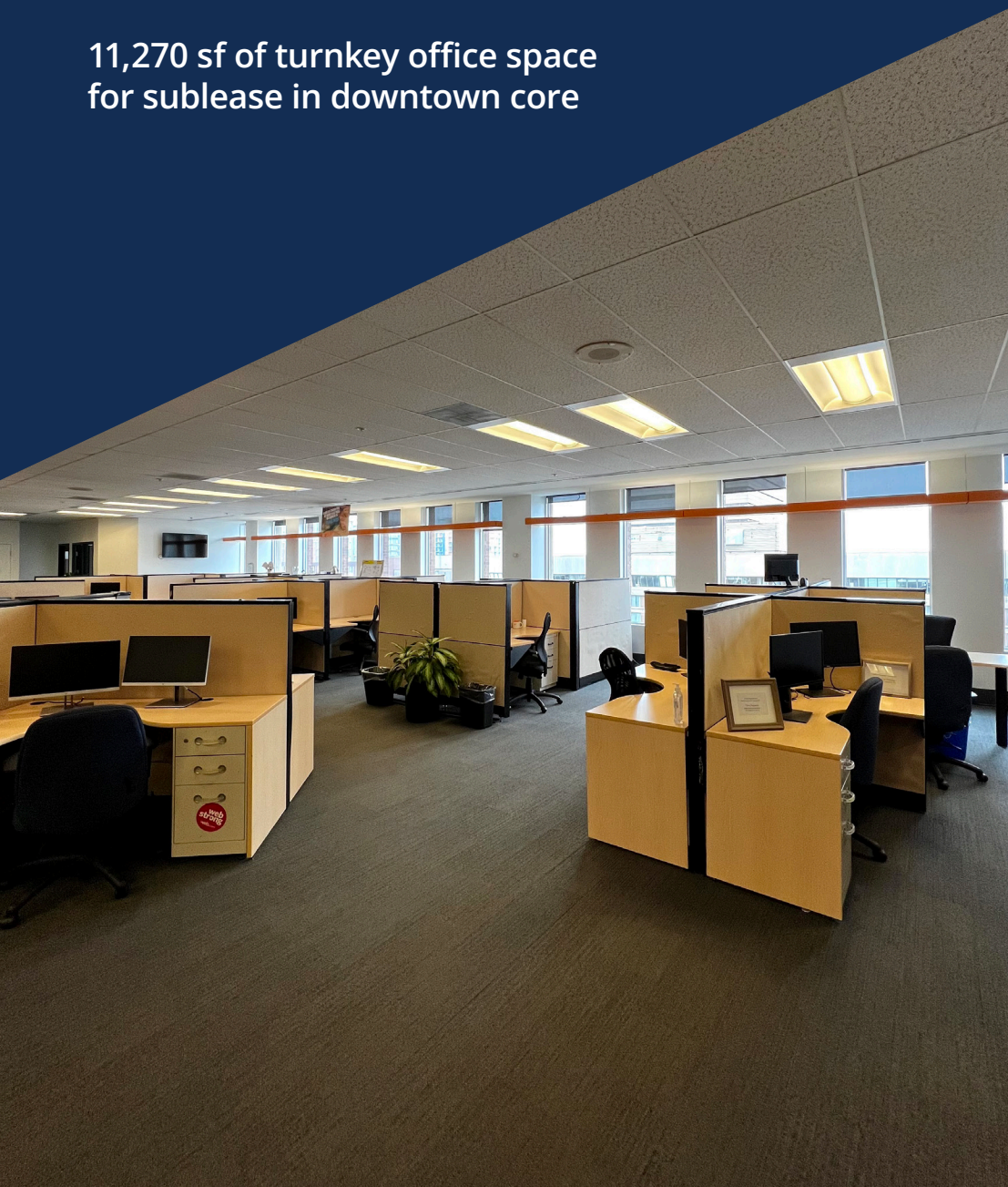


FOR SUBLEASE

# BARRINGTON TOWER, 1894 BARRINGTON ST DOWNTOWN HALIFAX

11,270 sf of turnkey office space  
for sublease in downtown core



**Geof Ralph**

- ☎ (902) 444-3006
- ☎ (902) 877-9324
- ✉ [geof@partnersglobal.com](mailto:geof@partnersglobal.com)

[partnersglobal.com](http://partnersglobal.com)





# BARRINGTON TOWER, 1894 BARRINGTON ST | DOWNTOWN HALIFAX

## 11,270 sf of turnkey office space for sublease in downtown core

Surrounded by a vibrant business community and a vast array of amenities, Barrington Tower offers unparalleled convenience. Located within the Scotia Square complex, shops, services, and food establishments are an elevator ride away. In addition, the office tower features excellent connectivity through an extensive pedway network connecting the tower to Halifax's downtown core.

Expanding over the entire eleventh floor, the office space is meticulously designed, featuring generous windows that overlook Halifax in three directions. The comfortable and functional space features an excellent combination of bright open work space, training rooms, private offices, a large modern lunchroom, and a contemporary coffee station. Contact the listing agent to learn more!



11,270 SF of Turnkey Space

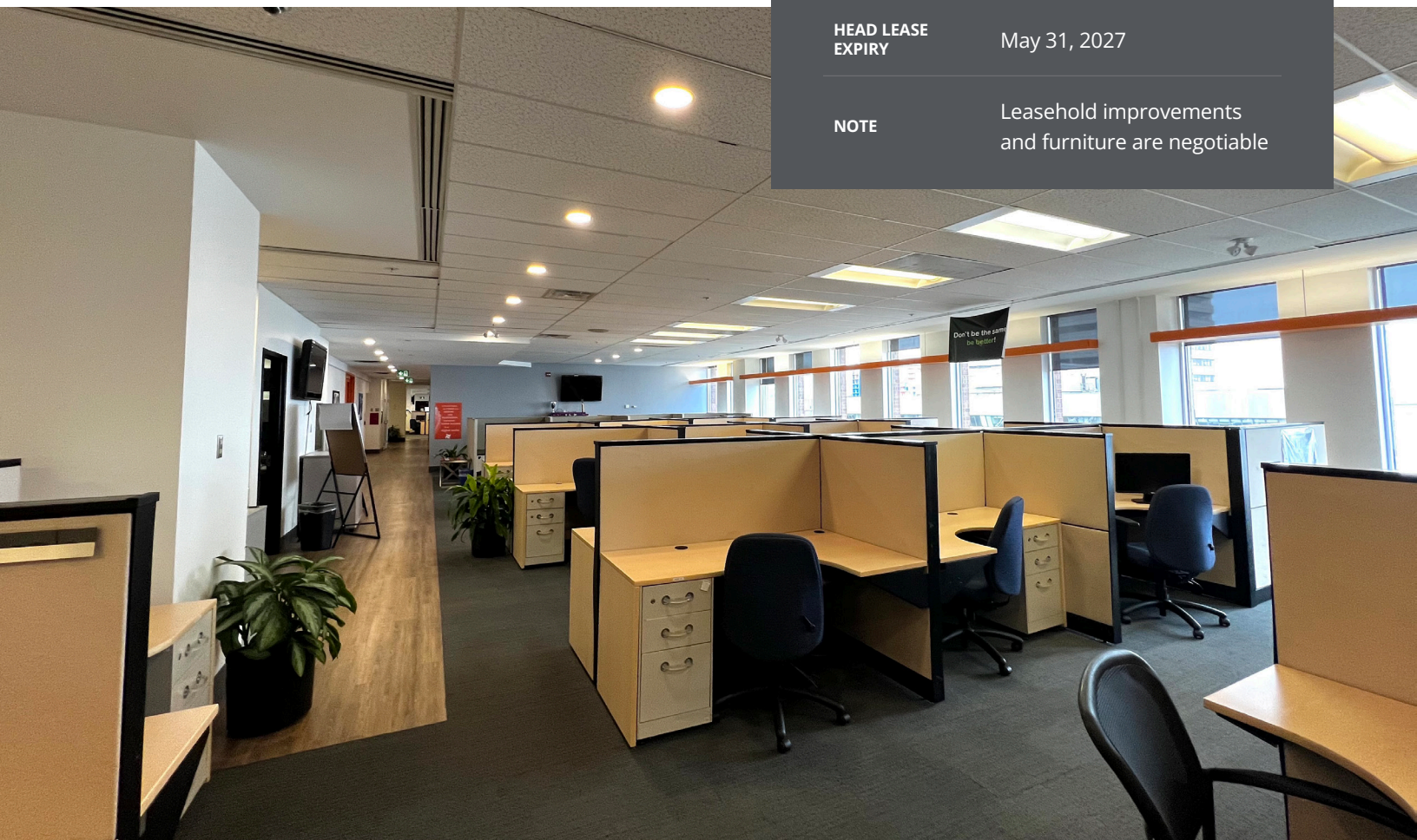


Water and City Views



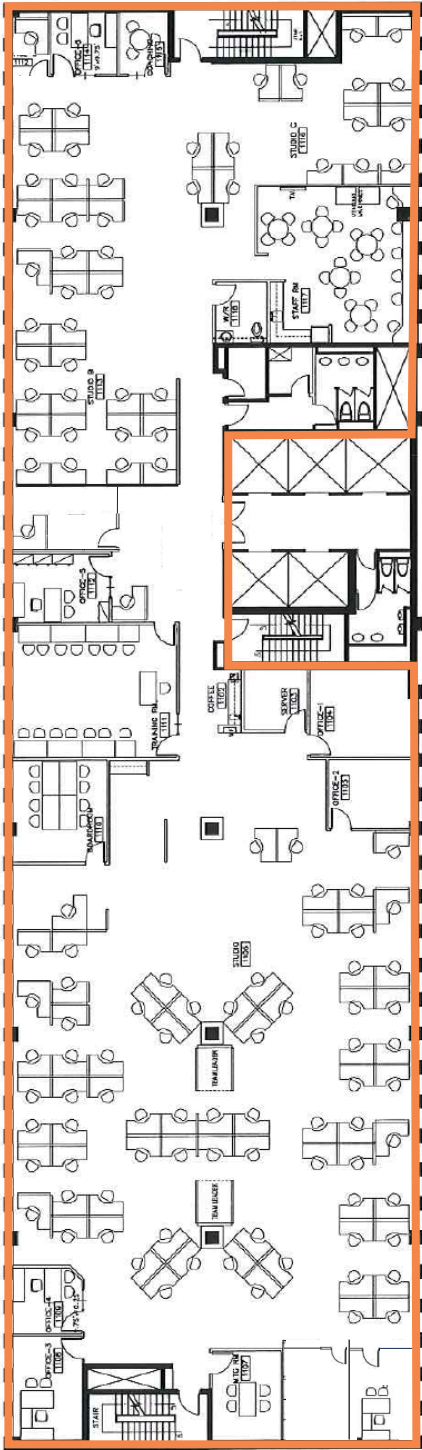
Parking Included

LISTING ID	10363
ADDRESS	1894 Barrington Street Suite 1100
LOCATION	Downtown Halifax
PROPERTY TYPE	Office
BUILDING NAME	Barrington Tower
BUILDING SIZE	187,426 sf
SIZE AVAILABLE	11,270 sf
FLOOR LOCATION	11 of 16
AVAILABILITY	Immediately
PARKING	40 free parking spaces
GROSS RENT	By negotiation (call a listing agent for details)
HEAD LEASE EXPIRY	May 31, 2027
NOTE	Leasehold improvements and furniture are negotiable



# BARRINGTON TOWER, 1894 BARRINGTON ST | DOWNTOWN HALIFAX

## Floor Plan - 11,270 sf



*\*Approximate floor plan; minor changes not represented*





Complete HVAC system

Direct access to 1,700 vehicle parkade

Access to shower facilities and lockers

24-hour security patrols

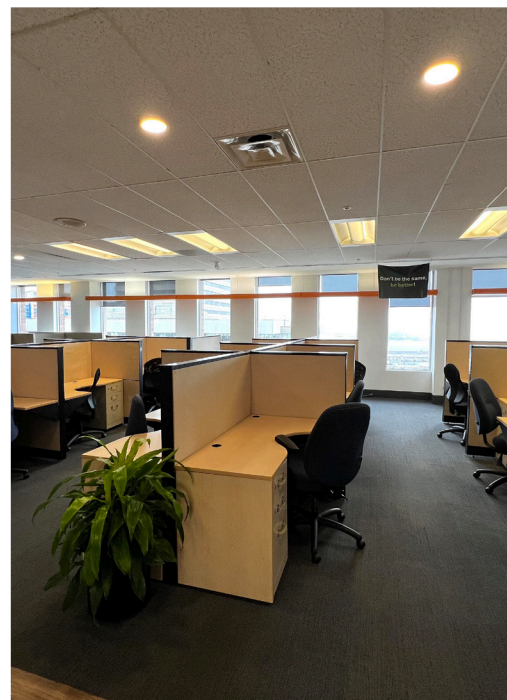
Option to lease fully furnished

Climate controlled bike room and repair station

Five elevators with 411 elevonic controls

Fully sprinklered

Contemporary coffee bar and lunch room





- 1** Halifax Citadel
- 2** Scotiabank Centre
- 3** Queens Marquee
- 4** Halifax Ferry Terminal
- 5** Halifax Convention Centre



**Geof Ralph**

(902) 444-3006

📞 (902) 877-9324

✉️ [geof@partnersglobal.com](mailto:geof@partnersglobal.com)

[partnersglobal.com](http://partnersglobal.com)

Partners Global Corporate Real Estate (Partners Global) and its agents and affiliates do not warrant, represent or guarantee the accuracy, completeness or validity of the information provided herein. Parties interested in the property are to conduct their own independent investigations to determine the suitability of the property for their intended use and are strongly urged to discuss the property with their professional advisors. Partners Global expressly disclaims any liability arising out of any errors and omissions in the information. Prospective clients should not confine themselves to the contents but should make their own enquiries to satisfy themselves in all respects. Partners Global will not accept any responsibility should any details prove to be incomplete or incorrect.

