

FOR LEASE

1521-1531 GRAFTON STREET DOWNTOWN HALIFAX

Charming retail and office spaces
available in downtown Halifax



Geof Ralph

☎ (902) 444-3006
📠 (902) 877-9324
✉ geof@partnersglobal.com

partnersglobal.com

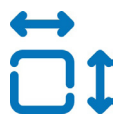


1521-1531 GRAFTON STREET | DOWNTOWN HALIFAX

Charming retail and office spaces available in downtown Halifax

Combining historical charm and contemporary functionality, 1521-1531 Grafton Street is a vibrant commercial building nestled in the heart of downtown Halifax. Boasting an ideal location, this building provides convenient access to an array of amenities, public transportation networks, and the entire downtown core.

The unique workplace features a delightful ambiance with exposed brick walls, abundant natural lighting, and an inviting atmosphere. The building offers a range of flexible floor plans, including turnkey space, as well as raw spaces ready for customization, catering to diverse business needs and desires.



Multiple Floor
Plans Available

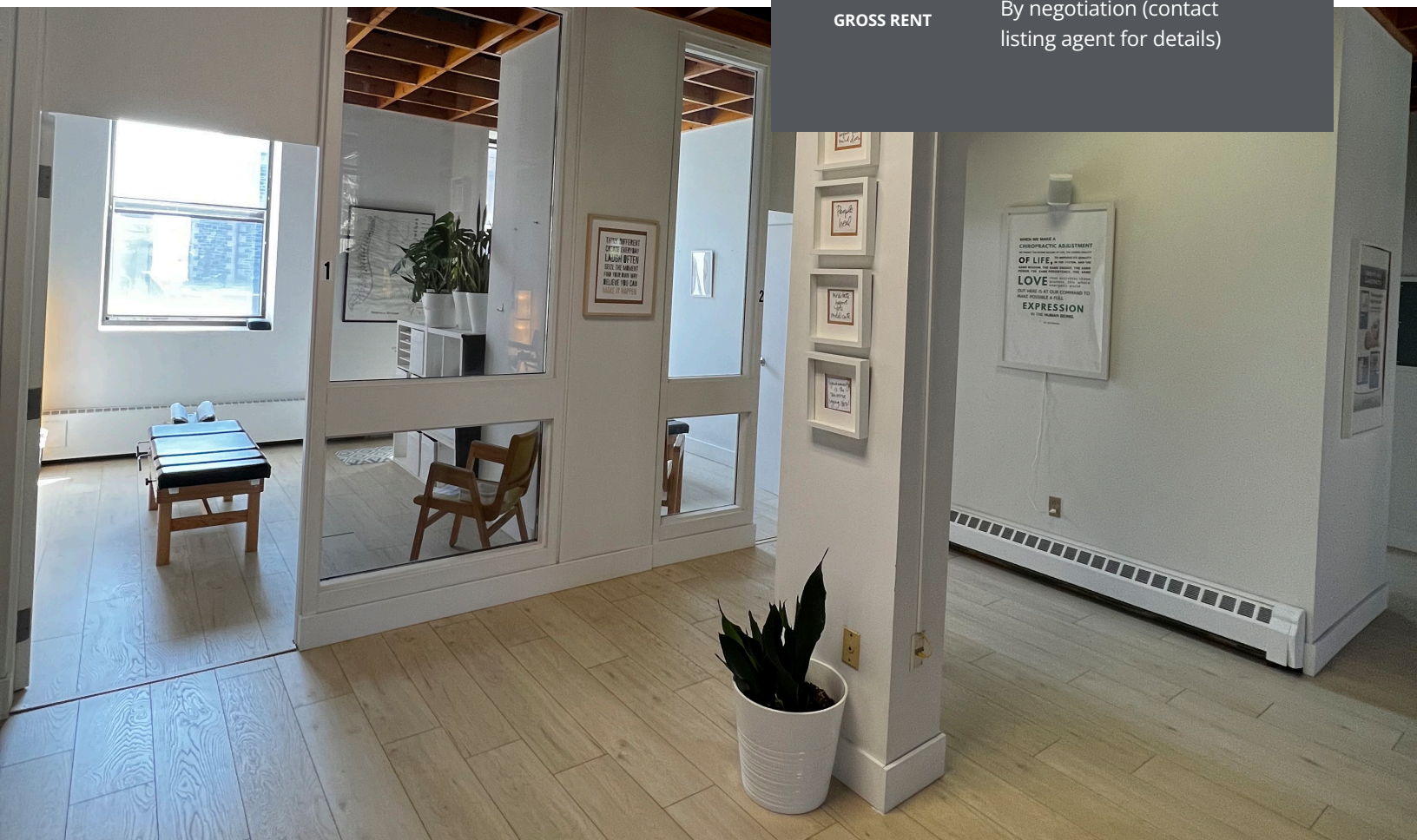


High Traffic
Area



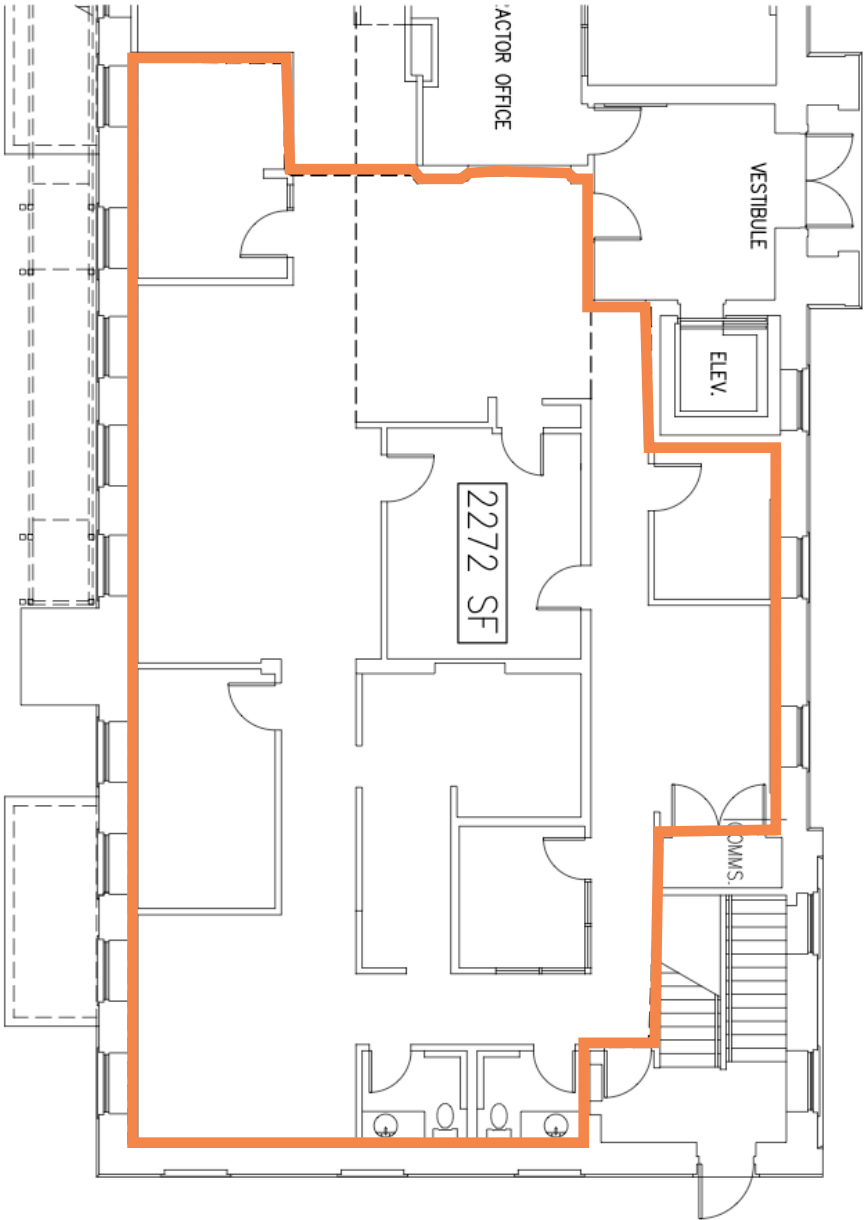
On-site Parking
Available

LISTING ID	10355
ADDRESS	1521-1531 Grafton Street
LOCATION	Downtown Halifax
PROPERTY TYPE	Office and/or retail
SIZE AVAILABLE	1st Floor: 2,272 sf 1st Floor: 2,650 sf 2nd Floor: 450 sf 2nd Floor: 6,330 sf 3rd Floor: 2,525 sf 3rd Floor: 1,640 sf
AVAILABILITY	Various availability (contact listing agent for details)
ZONING	Downtown Halifax (DH)
PARKING	On-site
GROSS RENT	By negotiation (contact listing agent for details)

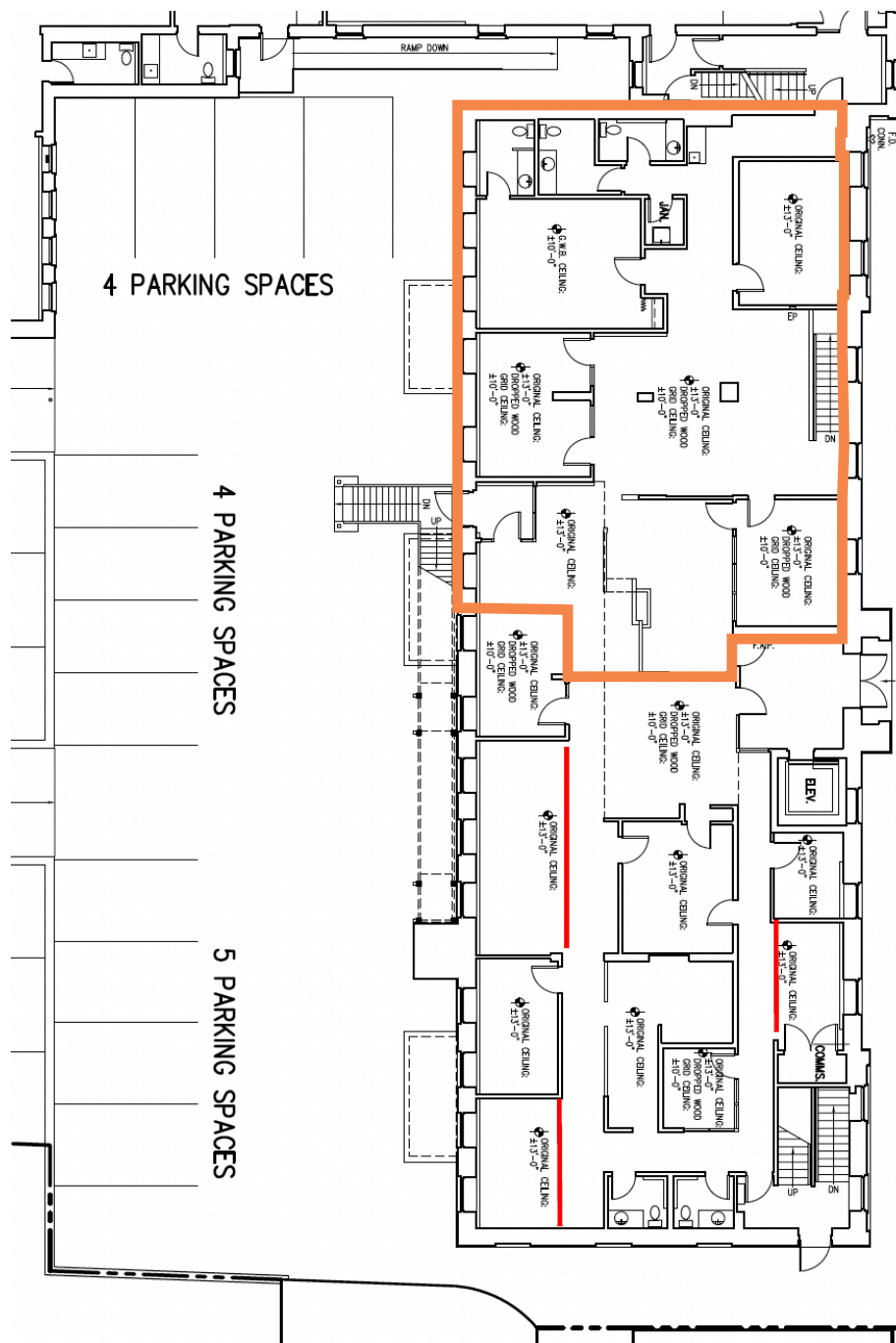


1521-1531 GRAFTON STREET | DOWNTOWN HALIFAX

First Floor - 2,272 sf



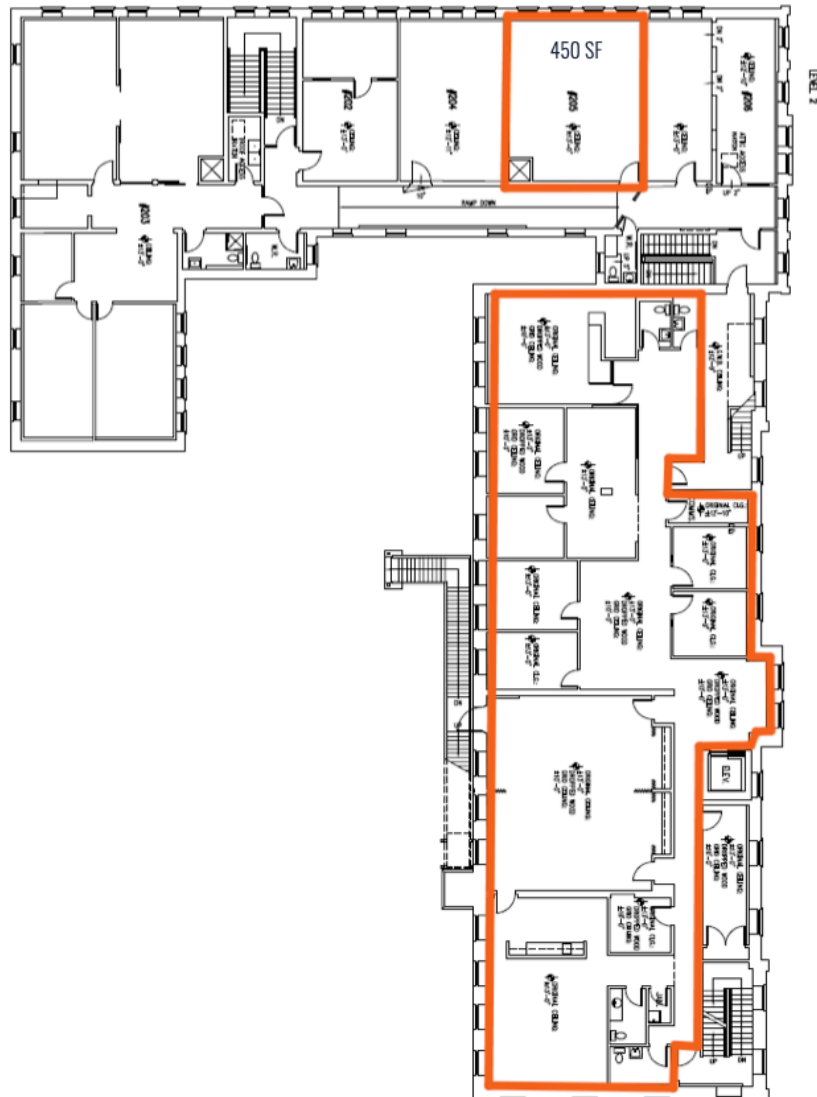
© 2011 Pearson Education, Inc.



1521-1531 GRAFTON STREET | DOWNTOWN HALIFAX

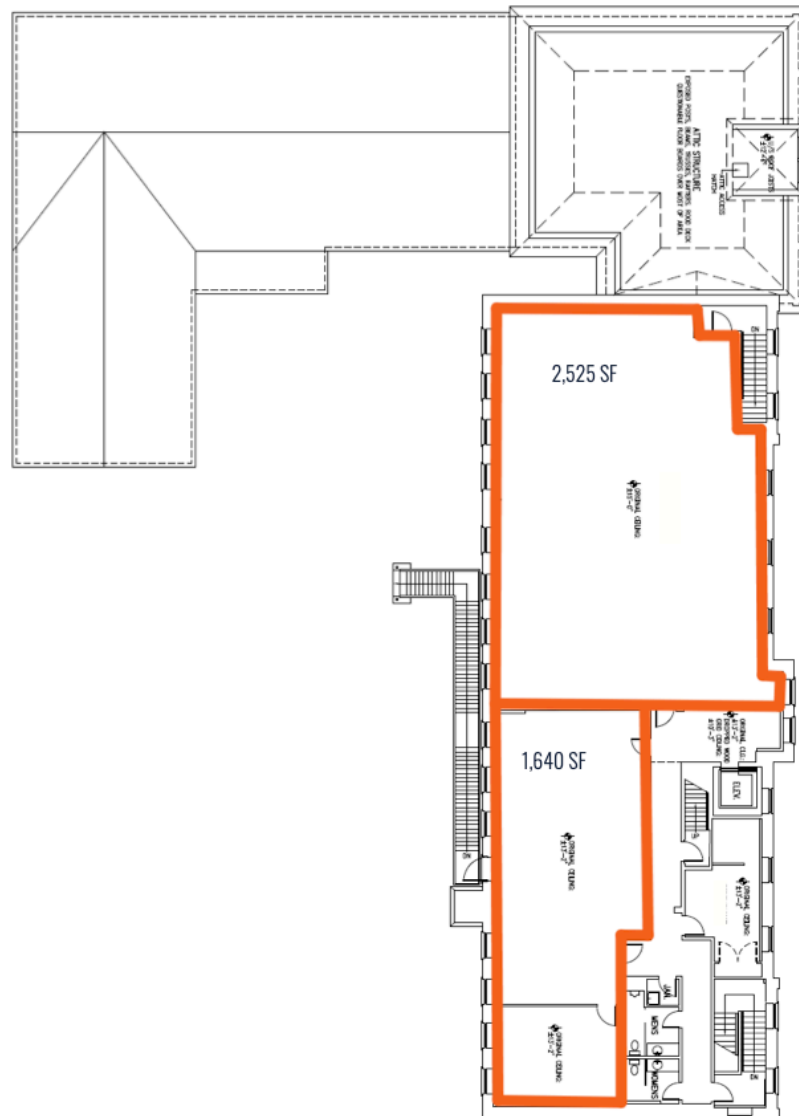
Second Floor - 450 sf

Second Floor - 6,330 sf (with opportunity to demise)



Page 10 of 10

Third Floor - 1,640 sf





Opportunities to
demise

Raw spaces ready for
customization

Rich with charm and
heritage

Professionally
managed property

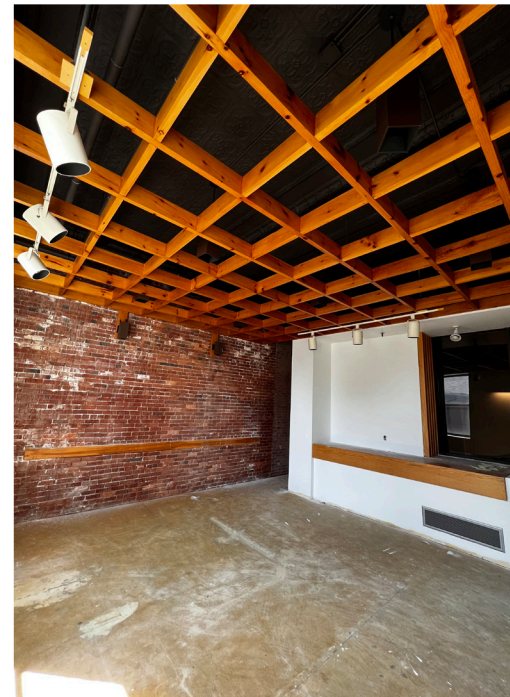
Water views from
second and third floors

Elevator access

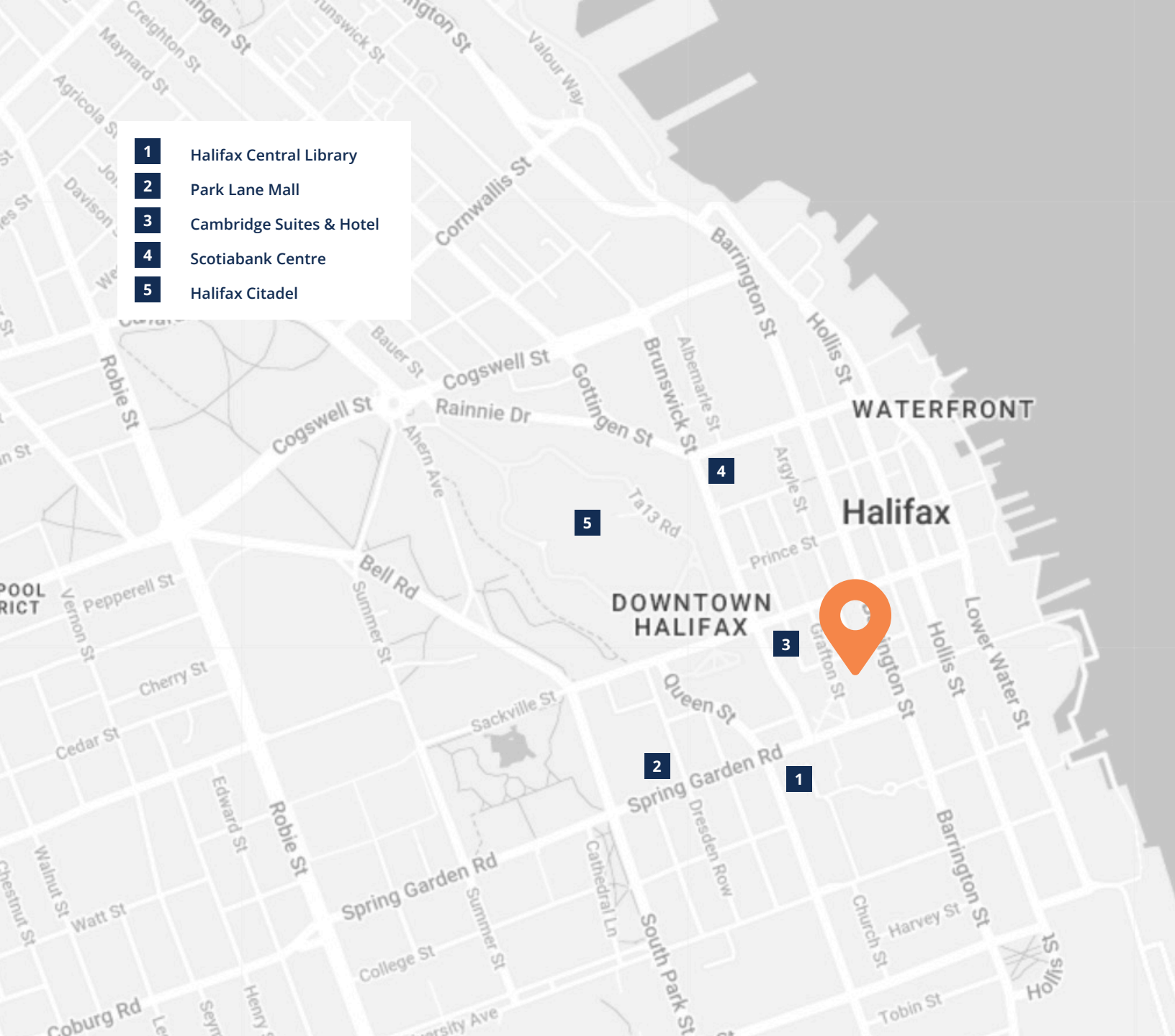
On-site parking
available

16' ceiling on third floor




Close to a vast array of
amenities



- 1 Halifax Central Library
- 2 Park Lane Mall
- 3 Cambridge Suites & Hotel
- 4 Scotiabank Centre
- 5 Halifax Citadel



Geof Ralph

 (902) 444-3006
 (902) 877-9324
 geof@partnersglobal.com

partnersglobal.com

Partners Global Corporate Real Estate (Partners Global) and its agents and affiliates do not warrant, represent or guarantee the accuracy, completeness or validity of the information provided herein. Parties interested in the property are to conduct their own independent investigations to determine the suitability of the property for their intended use and are strongly urged to discuss the property with their professional advisors. Partners Global expressly disclaims any liability arising out of any errors and omissions in the information. Prospective clients should not confine themselves to the contents but should make their own enquiries to satisfy themselves in all respects. Partners Global will not accept any responsibility should any details prove to be incomplete or incorrect.



PARTNERS GLOBAL
CORPORATE REAL ESTATE