

FOR LEASE

6265 QUINPOOL ROAD HALIFAX, NOVA SCOTIA

Flexible leasing opportunities
on Quinpool Road



Geof Ralph

📞 (902) 877-9324

✉️ geof@partnersglobal.com

partnersglobal.com



Flexible office leasing opportunities on Quinpool Road

Well-located in the center of Halifax's peninsula, and with excellent frontage on one of the city's main corridors, 6265 Quinpool Road enjoys proximity to it all – amenities, restaurants, transit, and access to other areas of the urban core and beyond.

Currently, there are various leasing opportunities on the top floor of this three level walk-up. Availability ranges from 1,608 sf of nicely finished space with modern paint colours and newer flooring, to a full floor build-out opportunity, which would total approximately 2,900 sf (see following page for details). The building features ample natural light, and there are several off-street parking spots available, depending on the square footage leased.

Contact the listing agent to learn more!



Up to 2,900 sf
On Top Floor



Build to Suit
Options

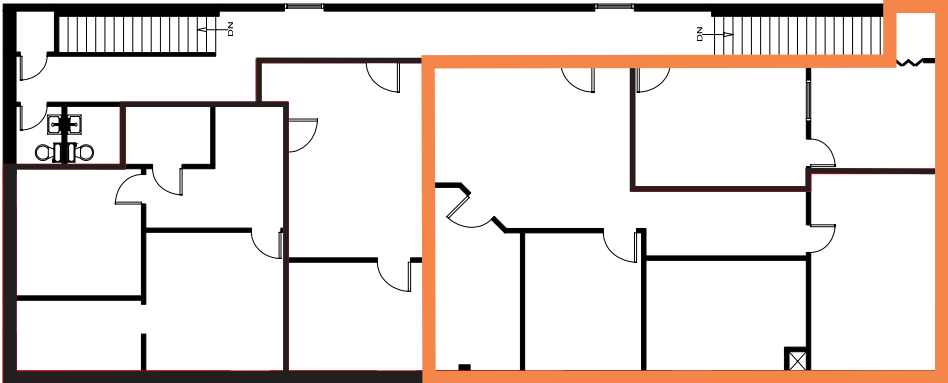


Some Parking
Available

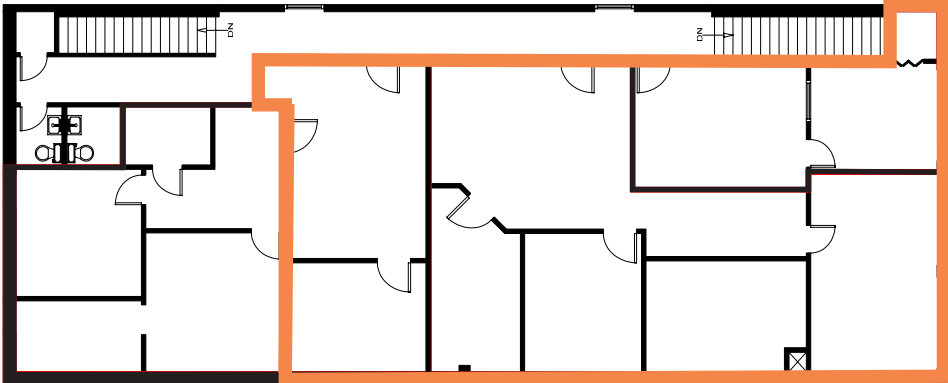
LISTING ID	10354
ADDRESS	6265 Quinpool Road
LOCATION	Halifax, NS
PROPERTY TYPE	Office
BUILDING SIZE	+/- 8,000 sf
FLOOR LOCATION	3 rd (top level)
MIN CONTIGUOUS SIZE AVAILABLE	1,608 sf
MAX CONTIGUOUS SIZE AVAILABLE	2,900 sf
AVAILABILITY	May 1 2023
PARKING	Some off street parking available behind building
RENT	By negotiation (contact the listing agent)



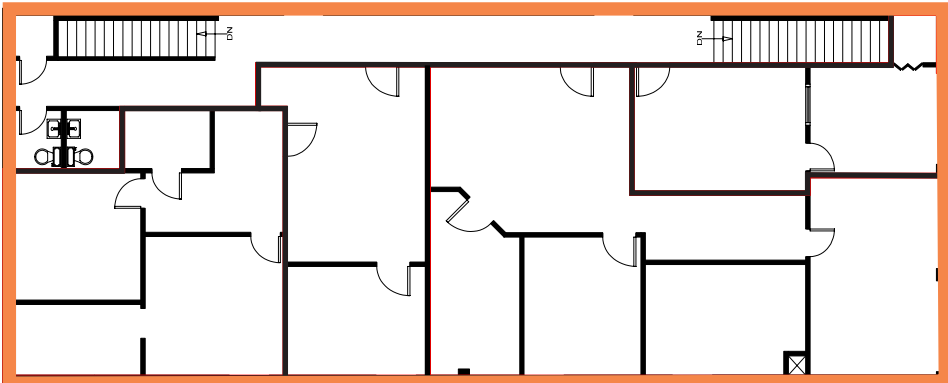
Option One - 1,608 sf

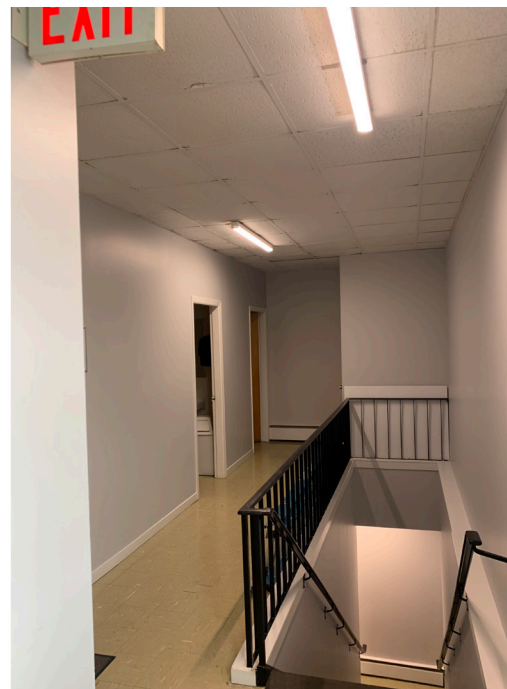


Option Two - 2,061 sf

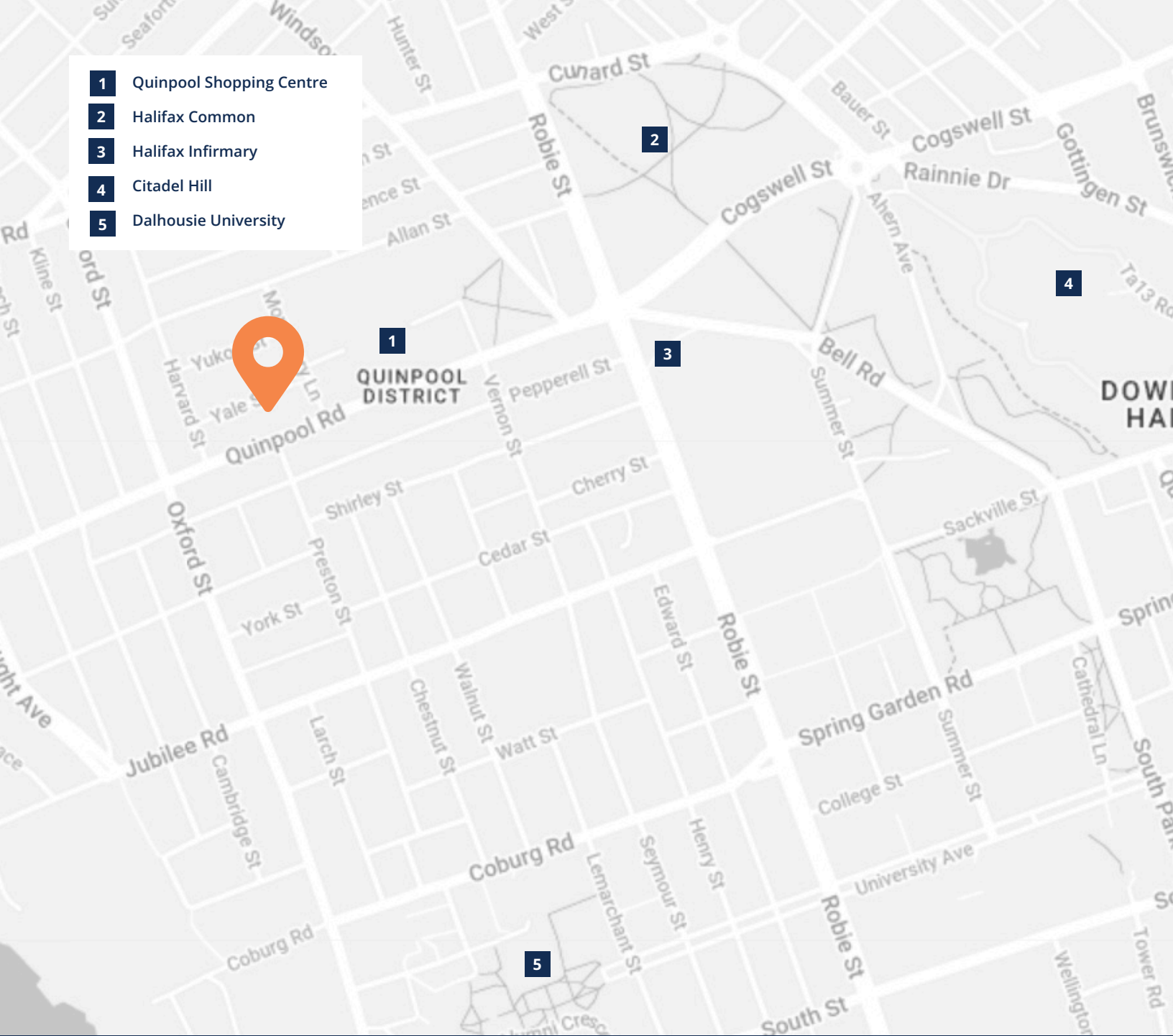


Option Three - +/- 2,900 sf (full floor)





- 1 Quinpool Shopping Centre
- 2 Halifax Common
- 3 Halifax Infirmiry
- 4 Citadel Hill
- 5 Dalhousie University



Geof Ralph

☎ (902) 877-9324
 ✉ geof@partnersglobal.com

partnersglobal.com

Partners Global Corporate Real Estate (Partners Global) and its agents and affiliates do not warrant, represent or guarantee the accuracy, completeness or validity of the information provided herein. Parties interested in the property are to conduct their own independent investigations to determine the suitability of the property for their intended use and are strongly urged to discuss the property with their professional advisors. Partners Global expressly disclaims any liability arising out of any errors and omissions in the information. Prospective clients should not confine themselves to the contents but should make their own enquiries to satisfy themselves in all respects. Partners Global will not accept any responsibility should any details prove to be incomplete or incorrect.

