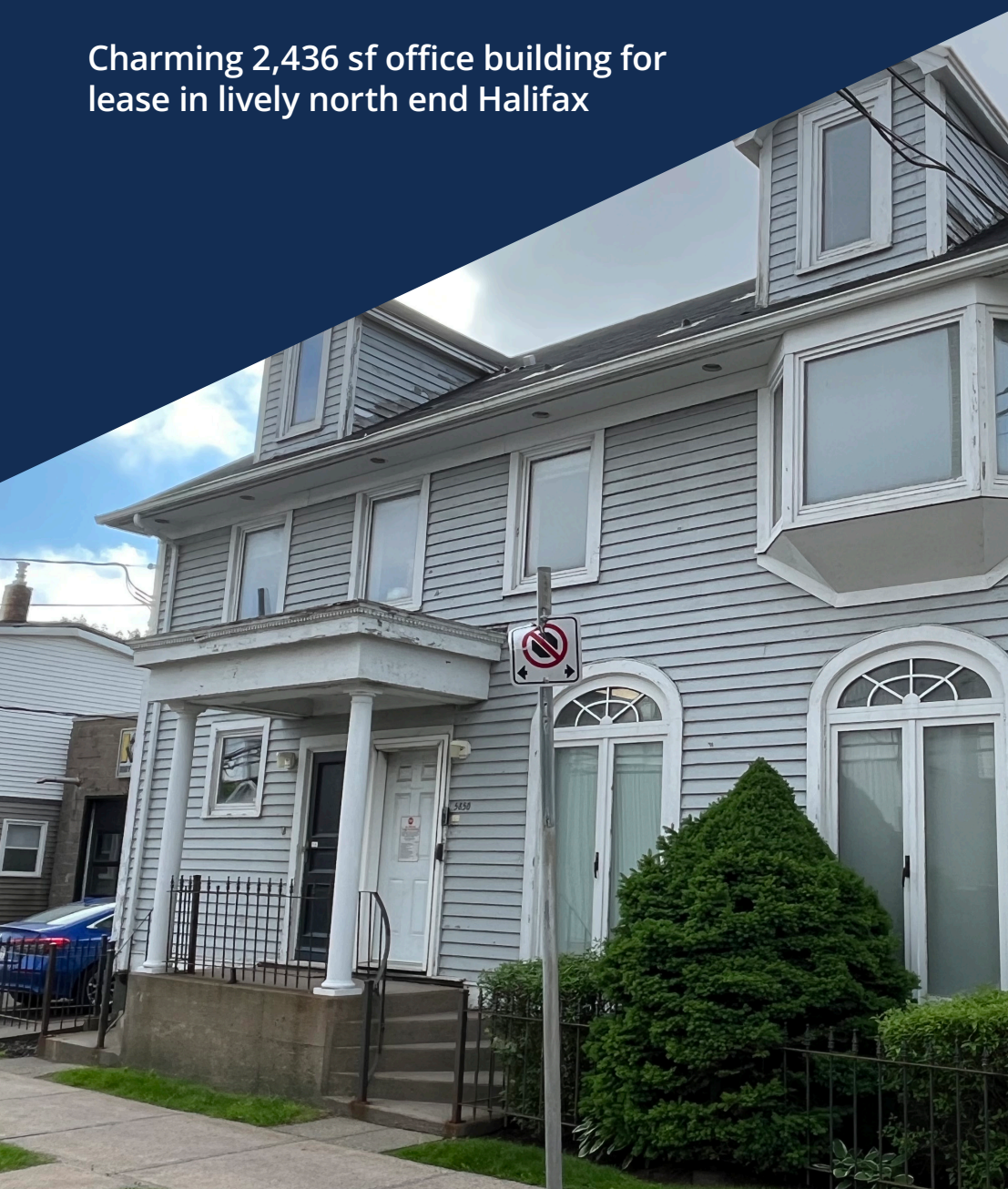


FOR LEASE

# 5850 BILBY STREET NORTH END, HALIFAX

Charming 2,436 sf office building for  
lease in lively north end Halifax



**Geof Ralph**

- 📞 (902) 444-3006
- 📠 (902) 877-9324
- ✉️ geof@partnersglobal.com

[partnersglobal.com](http://partnersglobal.com)

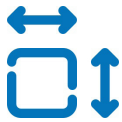


# 5850 BILBY STREET | NORTH END, HALIFAX

## Charming 2,436 sf office building for lease in lively north end Halifax

Combining convenience, accessibility, and functionality, 5850 Bilby Street is a 2,436 sf standalone commercial building, situated in Halifax's flourishing north end. Offering good quality, reusable leaseholds, the main level of the building consists of large, open workspace. The second and third levels boasts a mix of private offices and meeting spaces, creating a comfortable and productive atmosphere.

Within close proximity to downtown Halifax, two harbour bridges, public transit routes, and a wide array of amenities, 5850 Bilby Street is perfectly situated in rapidly growing area with thriving local businesses and a vibrant atmosphere.



2,436 sf,  
Three Levels

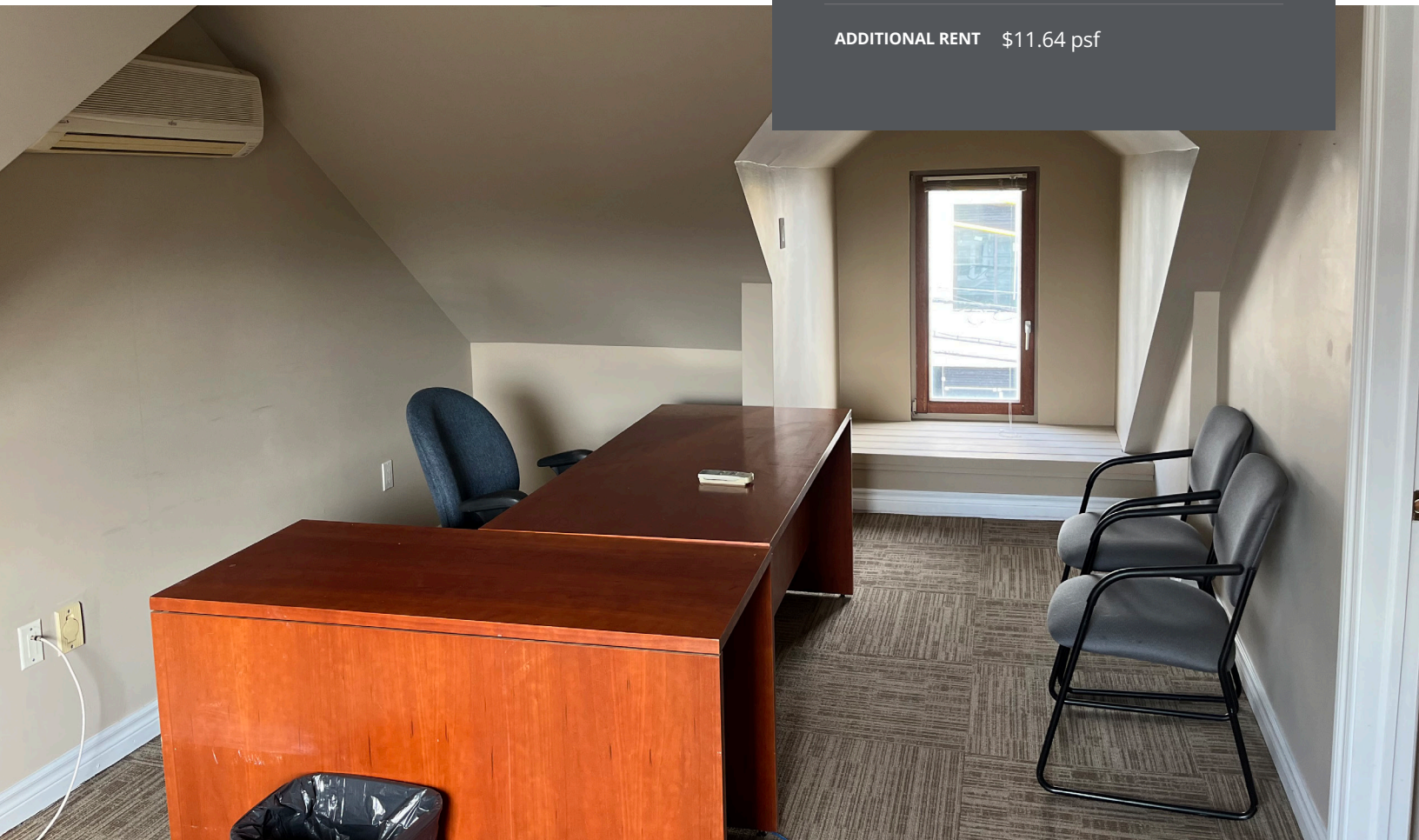


Central  
Location



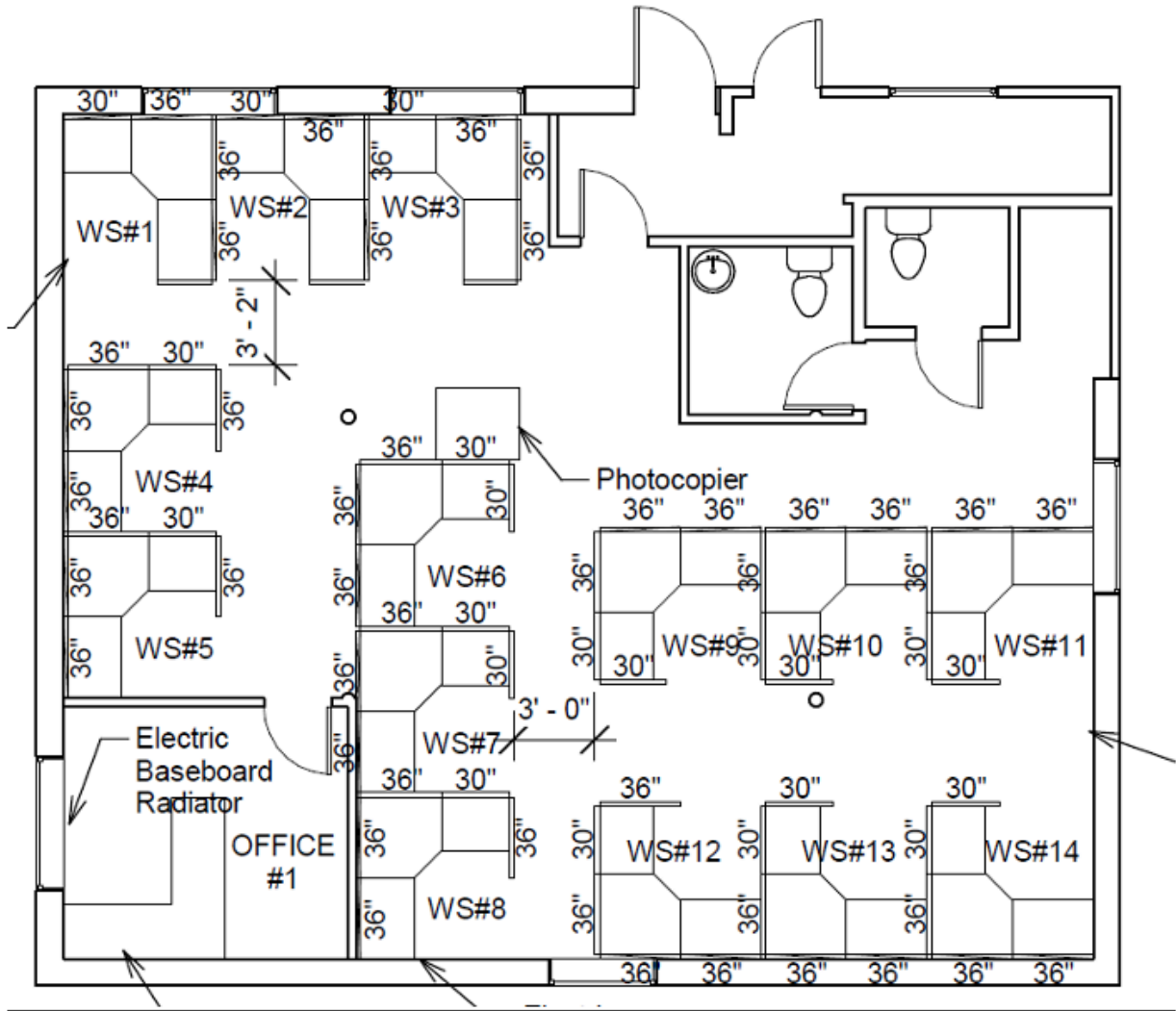
Parking  
Available

LISTING ID	10367
ADDRESS	5850 Bilby Street
LOCATION	North End
PROPERTY TYPE	Office / Commercial
LOT SIZE	3,700 sf
SIZE AVAILABLE	2,436 sf
FLOOR LOCATION	First, second, and third floor
AVAILABILITY	Immediately
PARKING	Some parking available within close proximity of the building
BASE RENT	By negotiation (call a listing agent for details)
ADDITIONAL RENT	\$11.64 psf



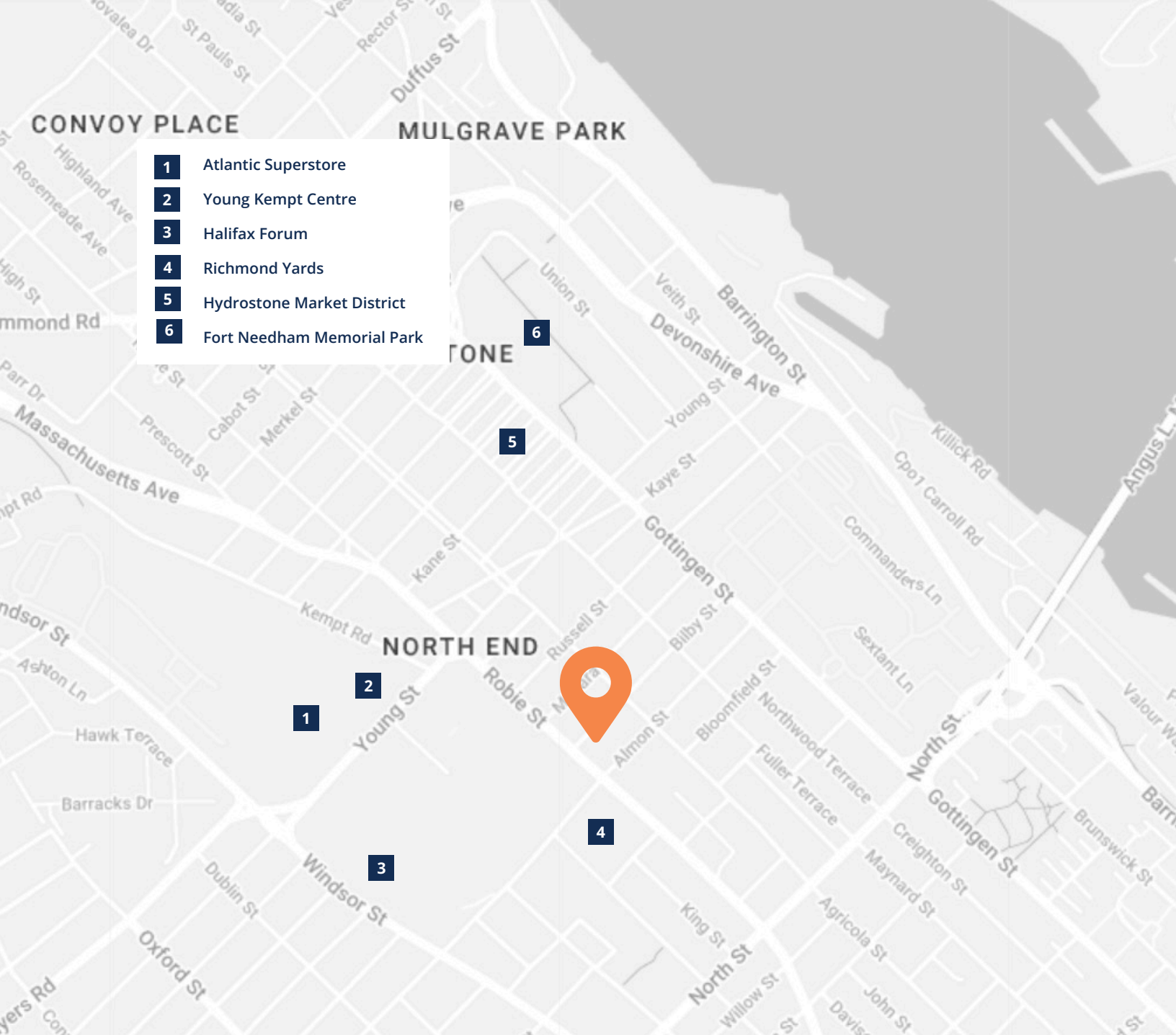
# 5850 BILBY STREET | NORTH END, HALIFAX

## Floor Plan - First Level



Floor Plan - Second and Third Level





- 1 Atlantic Superstore
- 2 Young Kempt Centre
- 3 Halifax Forum
- 4 Richmond Yards
- 5 Hydrostone Market District
- 6 Fort Needham Memorial Park



**Geof Ralph**

☎ (902) 444-3006  
📠 (902) 877-9324  
✉ geof@partnersglobal.com

[partnersglobal.com](http://partnersglobal.com)

Partners Global Corporate Real Estate (Partners Global) and its agents and affiliates do not warrant, represent or guarantee the accuracy, completeness or validity of the information provided herein. Parties interested in the property are to conduct their own independent investigations to determine the suitability of the property for their intended use and are strongly urged to discuss the property with their professional advisors. Partners Global expressly disclaims any liability arising out of any errors and omissions in the information. Prospective clients should not confine themselves to the contents but should make their own enquiries to satisfy themselves in all respects. Partners Global will not accept any responsibility should any details prove to be incomplete or incorrect.

