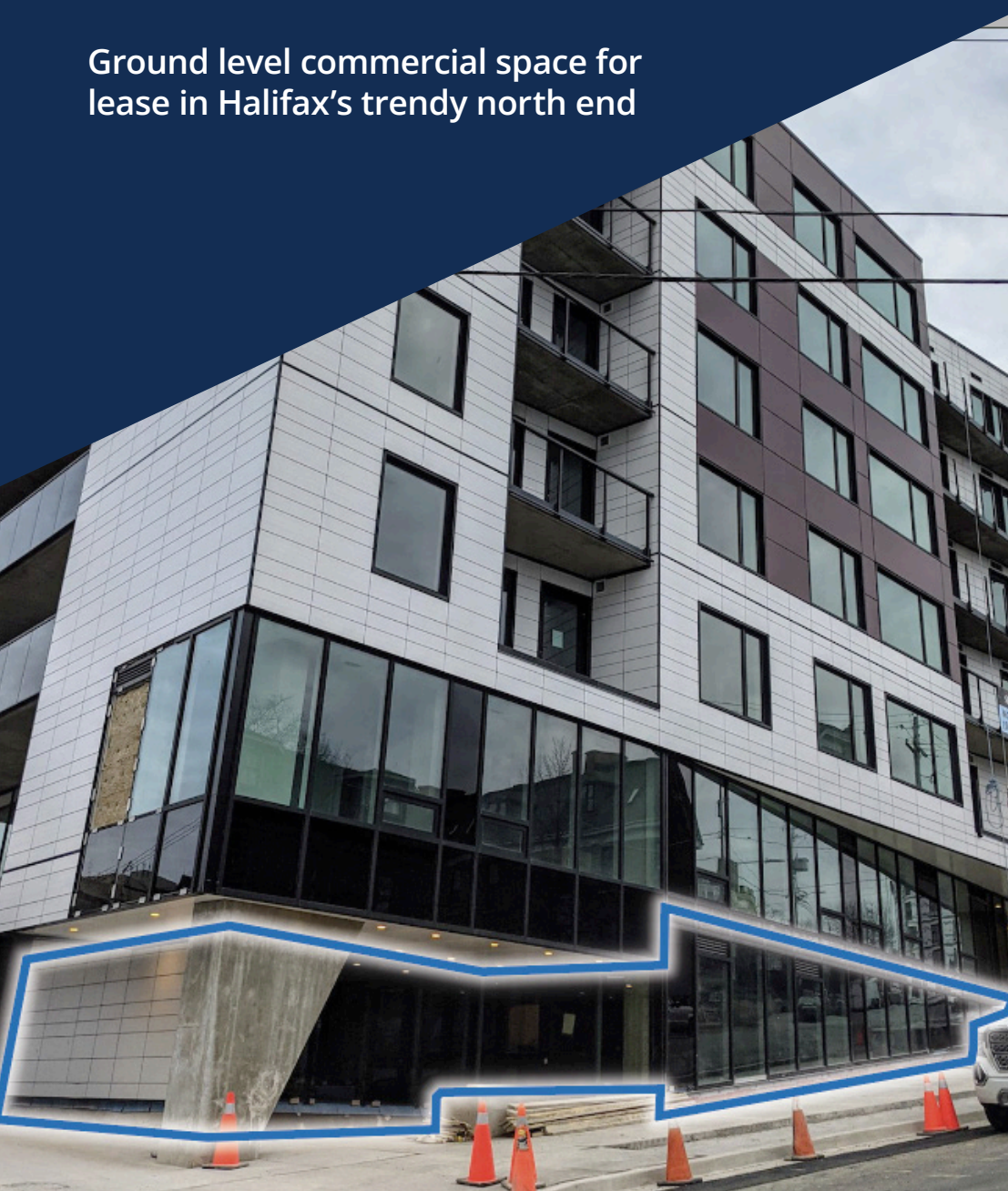


**FOR LEASE**

# THE ANTHONY, 5426 PORTLAND PLACE NORTH END, HALIFAX

Ground level commercial space for  
lease in Halifax's trendy north end



**Geof Ralph**

📞 (902) 444-3006  
📱 (902) 877-9324  
✉️ [geof@partnersglobal.com](mailto:geof@partnersglobal.com)

[partnersglobal.com](http://partnersglobal.com)

 **PARTNERS GLOBAL**  
CORPORATE REAL ESTATE



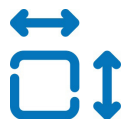
# THE ANTHONY, 5426 PORTLAND PLACE | NORTH END, HALIFAX

## Ground level commercial space for lease in Halifax's trendy north end

Welcome to The Anthony - a high-end mixed-use development nestled between Gottingen Street and Brunswick Street in the city's trend and rapidly revitalizing North End.

This +/- 2,600 sf space enjoys its own private entrance and several large storefront windows on the ground floor, with 125 luxury residential units above. Possible uses are plentiful, including restaurant, health and wellness, or boutique office for a professional service form.

Join the many new and established boutique retailers, eateries, and beverage venues in the North End Halifax! Contact the listing agent for more details and to schedule a tour!



2,600 sf of Main Level Space

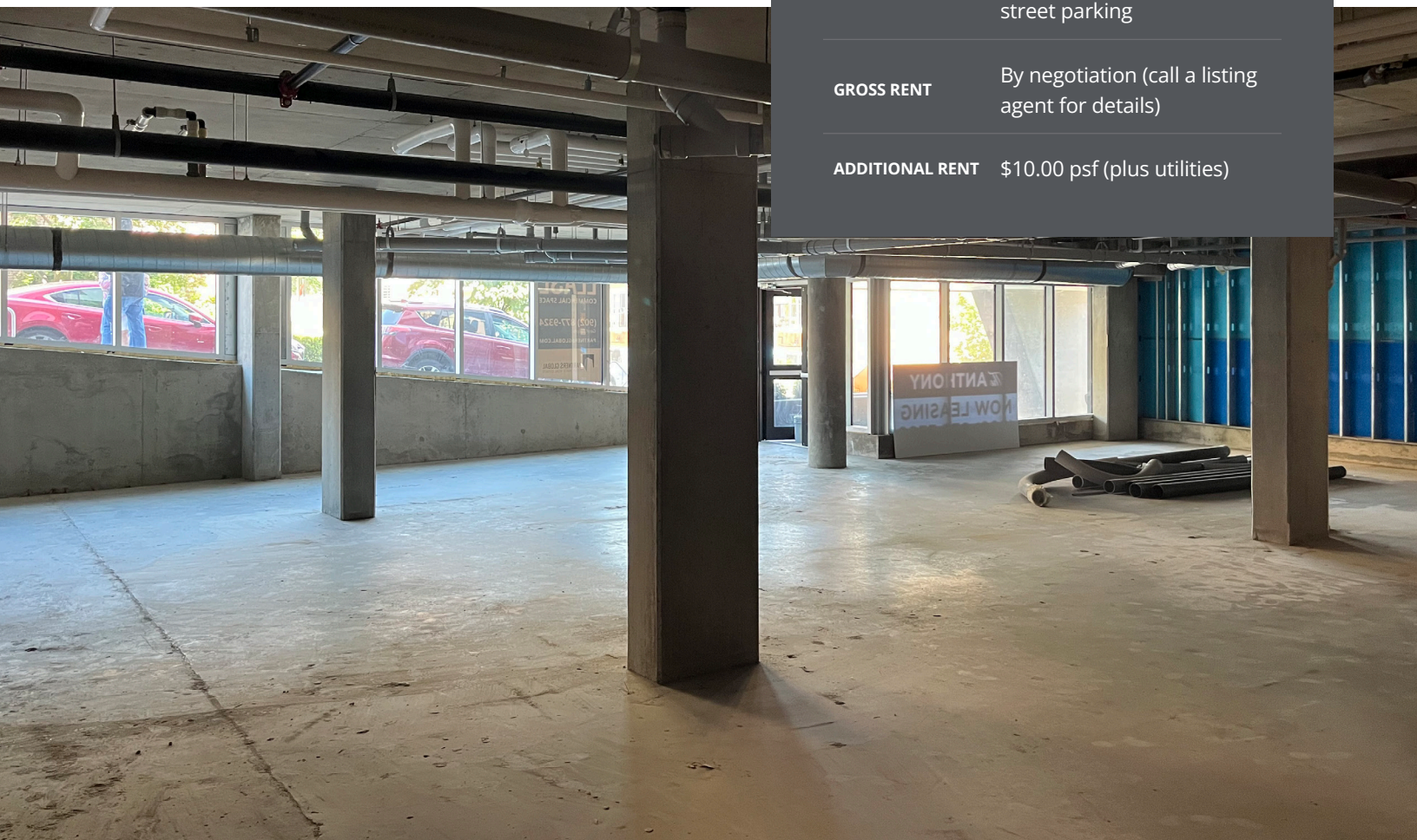


Trendy, Central Location



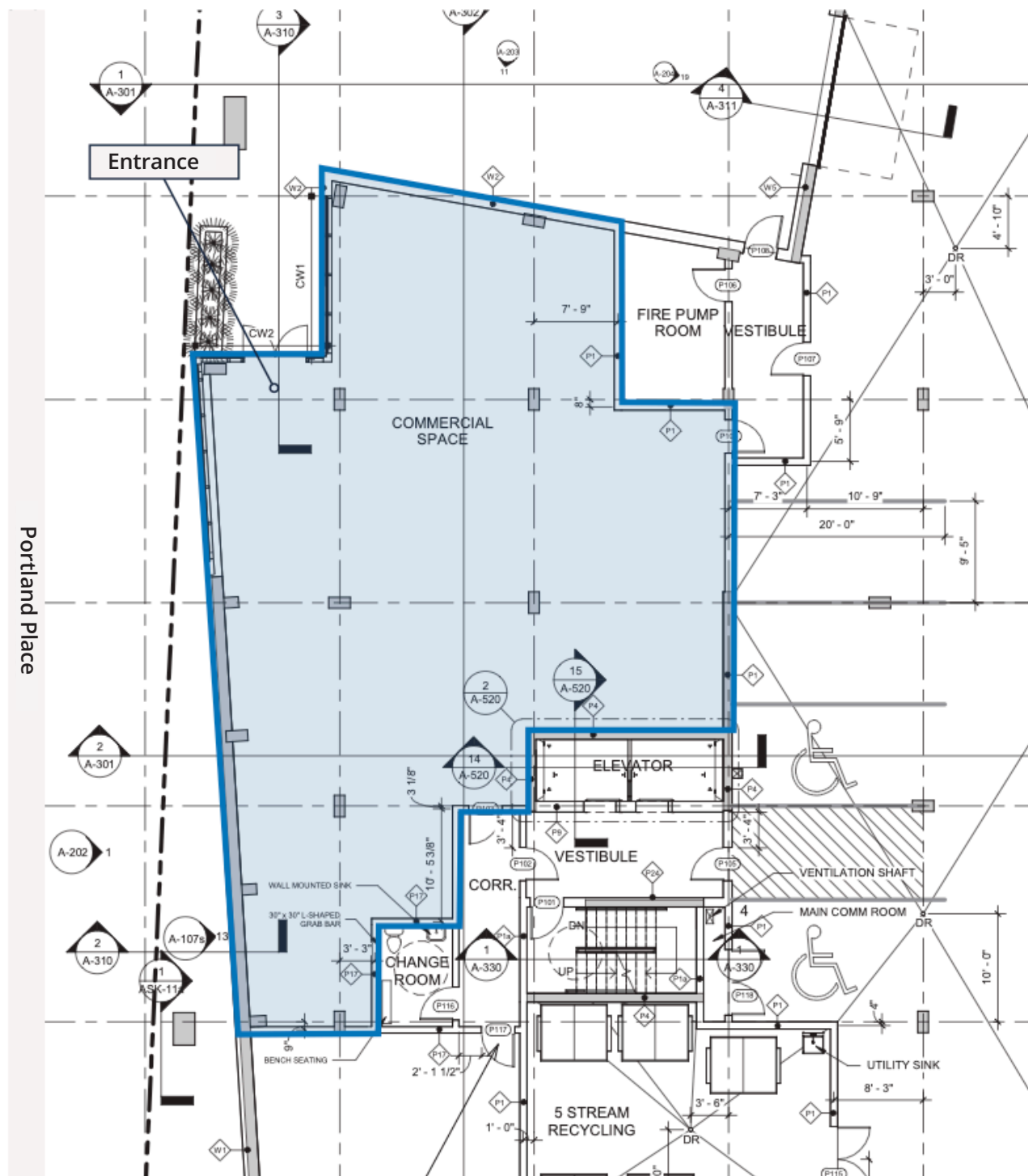
Paid Parking Available

LISTING ID	10195
ADDRESS	5429 Portland Place
LOCATION	North End
PROPERTY TYPE	Multi-storey mixed-use building with street level commercial and 125 residential units above
BUILDING NAME	The Anthony
SIZE AVAILABLE	+/- 2,600 sf
FLOOR LOCATION	Lobby level
AVAILABILITY	Immediately for tenant construction
PARKING	Underground tenant parking available (paid) and surrounding municipal street parking
GROSS RENT	By negotiation (call a listing agent for details)
ADDITIONAL RENT	\$10.00 psf (plus utilities)



# THE ANTHONY, 5426 PORTLAND PLACE | NORTH END, HALIFAX

## Floor Plan





# THE ANTHONY, 5426 PORTLAND PLACE | NORTH END, HALIFAX

---

- ✓ Class A mixed-use commercial property
- ✓ Neighbouring numerous popular amenities
- ✓ Raw space ready for tenant customization, catering to diverse business needs and desires
- ✓ Underground, on-site parking available
- ✓ Exterior signage opportunities
- ✓ Ample natural lighting
- ✓ Professionally managed property
- ✓ Location offers proximity to vibrant downtown Halifax







**Geof Ralph**

☎ (902) 444-3006  
📠 (902) 877-9324  
✉ [geof@partnersglobal.com](mailto:geof@partnersglobal.com)

[partnersglobal.com](https://partnersglobal.com)

Partners Global Corporate Real Estate (Partners Global) and its agents and affiliates do not warrant, represent or guarantee the accuracy, completeness or validity of the information provided herein. Parties interested in the property are to conduct their own independent investigations to determine the suitability of the property for their intended use and are strongly urged to discuss the property with their professional advisors. Partners Global expressly disclaims any liability arising out of any errors and omissions in the information. Prospective clients should not confine themselves to the contents but should make their own enquiries to satisfy themselves in all respects. Partners Global will not accept any responsibility should any details prove to be incomplete or incorrect.

