

NOVA SCOTIA LISTING REPORT

February 2024

Partners Global Corporate Real Estate Inc.
2085 Maitland Street, Suite 300, Halifax, NS B3K 2Z8
☎ (902) 444-4004
✉ halifax@partnersglobal.com

FEATURED LISTINGS



250 BROWNLOW AVENUE, DARTMOUTH

Size	Up to 20,556 sq. ft.
Price	Contact the listing agent
Features	<ul style="list-style-type: none"> • Flexible floor plan, potential to demise to cater to tenant's specific requirements • Ample, on-site parking • High-profile signage opportunities • Excellent visibility and surrounded by amenities • Shared loading area with two dock doors

Contacts Geof Ralph



133 BAKER DRIVE, DARTMOUTH

Size	3,610 sq. ft.
Price	\$33.10 psf (gross)
Features	<ul style="list-style-type: none"> • Office / medical space in Baker Drive Health & Wellness Centre, a single-storey meticulously designed Class-A facility • Located in rapidly growing area • Ample, on-site parking • Mix of private offices / treatment rooms and open space with reception area and a boardroom

Contact Matt Ross



2085 MAITLAND STREET, SUITE 200, HALIFAX

Size	3,036 sq. ft.
Price	Contact the listing agent
Features	<ul style="list-style-type: none"> • Office space located in a four-storey heritage building in trendy North End Halifax • Rich with character and charm • High ceilings, hardwood floors, and exposed brick • Mix of private offices, boardroom, open workspace, and kitchen • On-site parking available

Contact Geof Ralph

FOR LEASE | OFFICE



NEW LISTING

250 Brownlow Avenue, Dartmouth

Up to 20,556 sq. ft.

Price by negotiation (contact listing agent)

Flexible floor plans, potential to demise to cater to tenant's specific needs; exterior signage opportunities; on-site parking; excellent accessibility & visibility

Contact Geof Ralph



NEW LISTING

133 Baker Drive, Dartmouth

3,610 sq. ft.

\$33.10 psf (gross)

Located in Baker Drive Health and Wellness Centre; versatile medical / office space; situated in a rapidly growing area; ample, on-site parking

Contact Matt Ross



NEW LISTING

2085 Maitland Street, Halifax

3,036 sq. ft.

Price by negotiation (contact listing agent)

Located in four-storey heritage office building; filled with charm and character; situated in trendy North End Halifax; exposed brick and high ceilings

Contact Geof Ralph



267 Cobequid Road, Lower Sackville

Up to 5,000 sq. ft.

Price by negotiation (contact listing agent)

Single-storey professional office building; on-site parking; flexible floor plan, potential to demise, exterior signage opportunities

Contact Geof Ralph



LEASED

5548 Kaye Street, Halifax

1,591 sq. ft.

Price by negotiation (contact listing agent)

Turnkey space in Hydrostone Market District; expansive front windows; on-site parking available; additional 300 sq. ft. of storage space

Contact Geof Ralph



190 Victoria Road, Dartmouth

3,500 sq. ft.

Price by negotiation (contact listing agent)

Two suites available: ground floor spans 3,500 sq. ft., second floor totals 1,815 sq. ft.; high vehicular area; free on-site parking; exterior signage opportunities

Contact Geof Ralph



1657 Bedford Row, Halifax

3,038 - 6,514 sq. ft.

Price by negotiation (contact listing agent)

Perfectly situated in downtown Halifax; thoughtfully designed suites with perimeter offices and meeting rooms; four parking spots available

Contact Geof Ralph



SUBLEASE

5251 Duke Street, Halifax

1,196 sq. ft.

Price by negotiation (contact listing agent)

Located in downtown Halifax; modern, turnkey office space located on the fourth floor of Duke Tower; on-site paid parking; option to lease fully furnished

Contact Geof Ralph

FOR LEASE | OFFICE



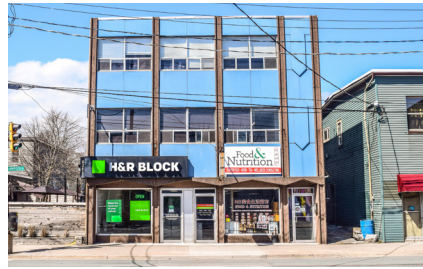
1496 Bedford Highway, Bedford

1,770 sq. ft.

Price by negotiation (contact listing agent)

Bright office space located on the sixth floor of Bedford Tower; ample, on-site parking; option to lease fully furnished; head lease expires January 31, 2025

Contact Geof Ralph



6265 Quinpool Road, Halifax

Options ranging 1,608 to 2,900 sq. ft.

Price by negotiation (contact listing agent)

Leasing opportunity with excellent frontage; various leasing opportunities; ample nature lighting; off-street parking; available immediately

Contact Geof Ralph



5251 Duke Street, Halifax

1,392 sq. ft.

Price by negotiation (contact listing agent)

Sublet in Duke Tower; available until January 31, 2026; excellent layout with open concept reception/work area; available within 30 days

Contact Geof Ralph



2854 Agricola Street, Halifax

1,809 sq. ft.

Price by negotiation (contact listing agent)

Entire boutique office building for lease in Halifax's North End; on-site parking for 6-8 cars; flexible layout; professional finishes throughout

Contact Geof Ralph



7020 Mumford Road, Halifax

2,650 - 7,950 sq. ft.

Price by negotiation (contact listing agent)

Three floors available, each 2,650 sf; quality finishes; mix of private offices and open space; building serviced by elevator

Contact Geof Ralph



1801 Hollis Street, Halifax

1,769 - 10,717 sq. ft.

Price by negotiation (contact listing agent)

Move-in ready; furnished model suites; fully built-out space, or build to suit options; Class A office tower downtown; **broker incentive program**

Contact Geof Ralph



2717 Joseph Howe Drive, Halifax

5th floor: 10,198 sq. ft.

Price by negotiation (contact listing agent)

Modern and quality office space overlooking the Northwest Arm; option to include remaining furniture; full-service cafeteria and daycare on-site

Contact Geof Ralph

FOR LEASE | COMMERCIAL

NEW LISTING



133 Baker Drive, Dartmouth

3,610 sq. ft.

\$33.10 psf (gross)

Located in Baker Drive Health & Wellness Centre; versatile medical / office space; situated in a rapidly growing area; ample, on-site parking

Contact Matt Ross

LEASED



5548 Kaye Street, Halifax

1,591 sq. ft.

Price by negotiation (contact listing agent)

Turnkey space in Hydrostone Market District; expansive front windows; on-site parking available; additional 300 sq. ft. of storage space

Contact Geof Ralph

SUBLEASE



362 Lacewood Drive, Halifax

5,198 sq. ft.

Price by negotiation (contact listing agent)

Sublease opportunity in Lacewood Square; retail space with +/- 400 sq. ft. warehouse with double door loading; ample natural light; free on-site parking

Contact Geof Ralph

SUBLEASE



114 Woodlawn Road, Dartmouth

6,756 sq. ft.

Price by negotiation (contact listing agent)

Sublease opportunity in Woodlawn Plaza; well-designed retail and office space with warehouse component; grade level loading; free, on-site parking

Contact Geof Ralph

SUBLEASE



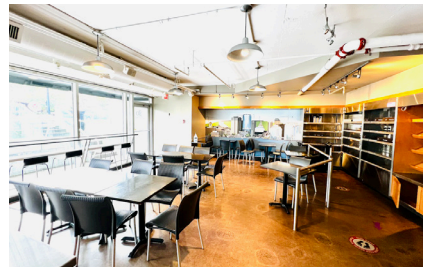
1452 Brenton Street, Halifax

1,635 sq. ft.

Price by negotiation (contact listing agent)

Turnkey ground-level retail space; high pedestrian traffic area; high ceilings with expansive storefront windows and top-tier vinyl flooring; fully accessible

Contact Geof Ralph



1801 Hollis Street, Retail Space, Halifax

2,232 sq. ft.

Price by negotiation (contact listing agent)

Turnkey restaurant and catering space; located in 1801 Hollis Street office tower in downtown Halifax; option to lease fully furnished; available immediately

Contact Geof Ralph



5850 Bilby Street, Halifax

2,436 sq. ft.

Price by negotiation (contact listing agent)

Convenience and functional space in Halifax's thriving north end; standalone property; mix of private offices and open work space

Contact Geof Ralph



3208 Isleville Street, Halifax

+/-1,750 sq. ft.

Price by negotiation (contact listing agent)

Bright, ground floor space; located in desired Hydrostone Market District; on-site parking; supported by Corridor (COR) zoning; ideal for small business

Contact Geof Ralph

FOR LEASE | COMMERCIAL



1521-1531 Grafton Street, Halifax

Options ranging 1,640 sf to 5,250 sq. ft.

Price by negotiation (contact listing agent)

Office and retail space in downtown Halifax; versatile layout to accommodate tenant's needs; close proximity to amenities; immediately available

Contact Geof Ralph



Willbrooke Avenue Land, Westville

Lot size: 98,010 sq. ft.

Price by negotiation (contact listing agent)

Approx. 2.3 acres of commercially zoned land for build-to-suit; located immediately off Exit 21; supported by Highway Commercial (C3) zoning

Contact Matt Ross



8990 Highway 7, Head of Jeddore

2,500 sq. ft.

Price by negotiation (contact listing agent)

Retail lease opportunity in Forest Hill Shopping Centre; end unit with ample parking; high visibility with signage opportunities; freshly painted interior

Contact Geof Ralph



5426 Portland Place, Halifax

+/- 2,600 sq. ft.

Price by negotiation (contact listing agent)

North-end commercial space at The Anthony; suitable for a variety of uses; large front windows; **leasing incentives available**

Contact Geof Ralph



448 Main Street, Kentville

4,000 sq. ft.

Price by negotiation (contact listing agent)

Situated in Kentville's charming downtown; garage and storage space available; on-site parking; supported by General Commercial (C-1) Zoning

Contact Geof Ralph

Click the property photos for more information

FOR SALE | ALL CLASSES



450 Highway No. 2, Enfield

1.12 acres; approved 42-unit building

\$1,300,000

Development opportunity; approved plan for 42-unit residential building; plans in place for two additional 42-unit building on adjacent site

Contact Geof Ralph



Lot 2A, 450 Highway 2, Enfield

Lot: 5.79 acres

\$3,300,000

Commercial development land located in the growing community of Enfield; combination zoning of R2 and MC; allows for various development

Contact Geof Ralph



114 Acadia Avenue, Stellarton

Building: 255,000 sq. ft.

\$8,500,000

Cutting-edge industrial space on over 12.5 acres of land; built in 1965; completely renovated in 2017

Contact Geof Ralph

CONTACT US

Brian Toole

Principal, Tenant Advisory

☎ (902) 476-6898
✉ brian@partnersglobal.com

Ian Stanley

Broker / Principal, Investments & Capital Markets

☎ (902) 229-7100
✉ ian@partnersglobal.com

Geof Ralph

Executive Vice President

☎ (902) 877-9324
✉ geof@partnersglobal.com

Jacquelyn Moriarty

Investments & Capital Markets

☎ (902) 440-3937
✉ jacquelyn@partnersglobal.com

Erin Crosby

Senior Advisor, Tenant Advisory

☎ (902) 877-1849
✉ erin@partnersglobal.com

Rod Winters

Senior Advisor

☎ (902) 223-5781
✉ rod@partnersglobal.com

Matt Ross

Associate Advisor

☎ (902) 324-1101
✉ matt@partnersglobal.com

Alison Sowerby

Sales & Marketing Coordinator

☎ (902) 580-0577
✉ alison@partnersglobal.com

Rileigh Pugh-Toole

Property & Office Coordinator

☎ (902) 444-4004
✉ rileigh@partnersglobal.com

Partners Global Corporate Real Estate (Partners Global) and its agents and affiliates do not warrant, represent or guarantee the accuracy, completeness or validity of the information provided herein. Parties interested in the property are to conduct their own independent investigations to determine the suitability of the property for their intended use and are strongly urged to discuss the property with their professional advisors. Partners Global expressly disclaims any liability arising out of any errors and omissions in the information. Prospective clients should not confine themselves to the contents but should make their own enquiries to satisfy themselves in all respects. Partners Global will not accept any responsibility should any details prove to be incomplete or incorrect.

partnersglobal.com

