

NOVA SCOTIA LISTING REPORT

June 2024

Partners Global Corporate Real Estate Inc.

2085 Maitland Street, Suite 300, Halifax, NS B3K 2Z8

☎ (902) 444-4004

✉ halifax@partnersglobal.com

FEATURED LISTINGS



NEW | FOR SALE

31 MOUNT HOPE AVE, DARTMOUTH

Size	Building: 15,100 sq. ft. / Lot: 59,500 sq. ft.
Price	\$4,500,000
Features	<ul style="list-style-type: none"> • Excellent investment opportunity • Fully leased light industrial building well-located in Woodside • Two levels of quality office space totalling approx. 3,000 sq. ft. • Offers large fenced yard and ample paved parking • Features include three phase power and two 10 tonne cranes

Contacts Ian Stanley & Matt Ross



NEW | FOR SUBLEASE

237 BROWNLOW AVE, SUITE 215, DARTMOUTH

Size	3,240 sq. ft.
Price	Contact the listing agent
Features	<ul style="list-style-type: none"> • Stylish and bright office space in City of Lakes Business Park • Includes reception area, kitchenette, open and enclosed meeting spaces, boardroom, workstation space, and storage • Ample, on-site parking • Option to include all existing furniture

Contact Geof Ralph



NEW | FOR LEASE

114 WOODLAWN RD, UNIT 117B, DARTMOUTH

Size	1,638 sq. ft.
Price	\$29.42 psf (gross)
Features	<ul style="list-style-type: none"> • Retail space situated in bustling Woodlawn Plaza • Well-designed space with expansive storefront windows, high ceilings, and barrier-free washroom • Remarkable exposure, ample on-site parking, and easy access to various public transit routes

Contact Matt Ross & Rod Winters

FOR LEASE | OFFICE



NEW LISTING

237 Brownlow Avenue, Dartmouth

3,240 sq. ft.

Price by negotiation (contact listing agent)

Bright office space for sublease in Park Place III; available fully furnished; tenant access to fitness centre and meeting spaces; ample on-site parking;

Contact Geof Ralph



99 Wyse Road, Dartmouth

743 - 8,591 sq. ft.

Price by negotiation (contact listing agent)

Prestigious Class A office tower; various layouts available including turnkey solutions and raw space; amenity rich building and surrounding area

Contact Geof Ralph



SUBLEASE

15 Dartmouth Road, Bedford

1,618 sq. ft.

Price by negotiation (contact listing agent)

Fully furnished space for sublease in Wardour Centre; office includes open concept work space, boardroom, and four private offices; on-site parking

Contact Geof Ralph



1877 Hollis Street, Halifax

+/- 6,700 sq. ft.

Price by negotiation (contact listing agent)

Beautiful loft-style office space; situated at the doorstep of downtown Halifax; space features exposed brick and wooden beams; available immediately

Contact Geof Ralph



250 Brownlow Avenue, Dartmouth

Up to 15,300 sq. ft.

Price by negotiation (contact listing agent)

Flexible floor plans, potential to demise to cater to tenant's specific needs; exterior signage opportunities; on-site parking; excellent accessibility & visibility

Contact Geof Ralph



267 Cobequid Road, Lower Sackville

Up to 4,500 sq. ft.

Price by negotiation (contact listing agent)

Single-storey professional office building; on-site parking; flexible floor plan, potential to demise, exterior signage opportunities

Contact Geof Ralph



190 Victoria Road, Dartmouth

3,500 sq. ft.

Price by negotiation (contact listing agent)

Two suites available: ground floor spans 3,500 sq. ft., second floor totals 1,815 sq. ft.; high vehicular area; free on-site parking; exterior signage opportunities

Contact Geof Ralph



1657 Bedford Row, Halifax

3,038 - 6,514 sq. ft.

Price by negotiation (contact listing agent)

Perfectly situated in downtown Halifax; thoughtfully designed suites with perimeter offices and meeting rooms; four parking spots available

Contact Geof Ralph

FOR LEASE | OFFICE



1496 Bedford Highway, Bedford

1,770 sq. ft.

Price by negotiation (contact listing agent)

Bright office space located on the sixth floor of Bedford Tower; ample, on-site parking; option to lease fully furnished; head lease expires January 31, 2025

Contact Geof Ralph



6265 Quinpool Road, Halifax

Options ranging 1,608 to 2,900 sq. ft.

Price by negotiation (contact listing agent)

Leasing opportunity with excellent frontage; various leasing opportunities; ample nature lighting; off-street parking; available immediately

Contact Geof Ralph



2854 Agricola Street, Halifax

1,809 sq. ft.

Price by negotiation (contact listing agent)

Entire boutique office building for lease in Halifax's North End; on-site parking for 6-8 cars; flexible layout; professional finishes throughout

Contact Geof Ralph



7020 Mumford Road, Halifax

2,650 sq. ft.

Price by negotiation (contact listing agent)

Mix of private offices and open space; building serviced by elevator; on-site parking available; well-located, close to amenities and public transportation

Contact Geof Ralph



1801 Hollis Street, Halifax

1,769 - 10,717 sq. ft.

Price by negotiation (contact listing agent)

Move-in ready; furnished model suites; fully built-out space, or build to suit options; Class A office tower downtown; **broker incentive program**

Contact Geof Ralph



SUBLEASE

2717 Joseph Howe Drive, Halifax

5th floor: 10,198 sq. ft.

Price by negotiation (contact listing agent)

Modern and quality office space overlooking the Northwest Arm; option to include remaining furniture; full-service cafeteria and daycare on-site

Contact Geof Ralph



1801 Hollis Street, Halifax

Ground floor: 6,658 sq. ft.

Price by negotiation (contact listing agent)

Unique office space available on main level of iconic office tower; excellent exposure; prestigious address; expansive windows throughout

Contact Geof Ralph

FOR LEASE | INDUSTRIAL



3200 Kempt Road, Halifax

4,000 sq. ft.

Price by negotiation (contact listing agent)

Sublease opportunity in multi-tenant plaza nestled in North End Halifax; two grade loading doors; exterior signage opportunities; on-site parking

Contact Geof Ralph



18 Higney Avenue, Dartmouth

3,200 sq. ft.

Price by negotiation (contact listing agent)

Industrial space with two grade level doors; 21' ceilings; signage opportunities; excellent visibility; ample, on-site parking; outside storage area

Contact Matt Ross



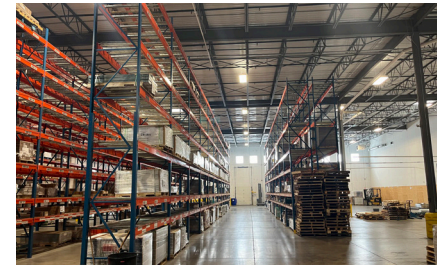
500 Windmill Road, Dartmouth

Up to 36,000 sq. ft. (demisable)

\$10.00 psf

Competitive net rent and low operating costs; dock and grade loading; adjacent rail spur; mix of 28,000 sq. ft. warehouse / 800 sq. ft. office

Contact Geof Ralph



130 John Savage Avenue, Dartmouth

20,595 sq. ft.

\$10.00 psf

Industrial space for sublease in Burnside Industrial Park; dock and grade loading; back-up generator; ample-on site parking; head lease expires March 2032

Contact Geof Ralph



192 Joseph Zatzman Drive, Dartmouth

1,931 sq. ft. / 3,872 sq. ft.

Price by negotiation (contact listing agent)

Well-located within Burnside Industrial Park; grade and load loading available; 18' clear heights; ample, on-site parking; ideal for service-oriented users

Contact Geof Ralph



196 Joseph Zatzman Drive, Dartmouth

6,054 sq. ft.

Price by negotiation (contact listing agent)

Light industrial space in Burnside Industrial Park; side double door loading and three dock doors; available immediately subject to thirty days notice

Contact Geof Ralph

FOR LEASE | COMMERCIAL



NEW LISTING

114 Woodlawn Road, Dartmouth

1,638 sq. ft.

\$29.42 psf (gross)

Retail space situated in bustling Woodlawn Plaza; well-designed space; expansive store front windows; excellent signage opportunities; on-site parking

Contact Matt Ross & Rod Winters



NEW LISTING

3200 Kempt Road, Halifax

4,000 sq. ft.

Price by negotiation (contact listing agent)

Sublease opportunity in multi-tenant plaza nestled in North End Halifax; two grade loading doors; exterior signage opportunities; on-site parking

Contact Geof Ralph



SUBLEASE

362 Lacewood Drive, Halifax

5,198 sq. ft.

Price by negotiation (contact listing agent)

Sublease opportunity in Lacewood Square; retail space with +/- 400 sq. ft. warehouse with double door loading; ample natural light; free on-site parking

Contact Geof Ralph



SUBLEASE

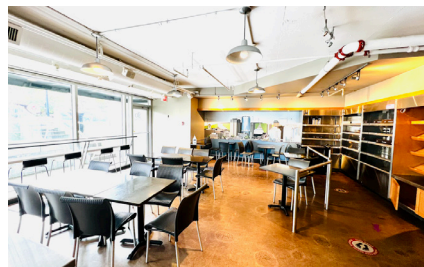
114 Woodlawn Road, Dartmouth

6,756 sq. ft.

Price by negotiation (contact listing agent)

Sublease opportunity in Woodlawn Plaza; well-designed retail and office space with warehouse component; grade level loading; free, on-site parking

Contact Geof Ralph



1801 Hollis Street, Retail Space, Halifax

2,232 sq. ft.

Price by negotiation (contact listing agent)

Turnkey restaurant and catering space; located in 1801 Hollis Street office tower in downtown Halifax; option to lease fully furnished; available immediately

Contact Geof Ralph



SUBLEASE

1452 Brenton Street, Halifax

1,635 sq. ft.

Price by negotiation (contact listing agent)

Turnkey ground-level retail space; high pedestrian traffic area; high ceilings with expansive storefront windows and top-tier vinyl flooring; fully accessible

Contact Geof Ralph



5850 Bilby Street, Halifax

2,436 sq. ft.

Price by negotiation (contact listing agent)

Convenience and functional space in Halifax's thriving north end; standalone property; mix of private offices and open work space

Contact Geof Ralph



3208 Isleville Street, Halifax

+/-1,750 sq. ft.

Price by negotiation (contact listing agent)

Bright, ground floor space; located in desired Hydrostone Market District; on-site parking; supported by Corridor (COR) zoning; ideal for small business

Contact Geof Ralph

FOR LEASE | COMMERCIAL



1521-1531 Grafton Street, Halifax

2,500 sq. ft. - 5,250 sq. ft.

Price by negotiation (contact listing agent)

Office and retail space in downtown Halifax; versatile layout to accommodate tenant's needs; close proximity to amenities; immediately available

Contact Geof Ralph



Willbrooke Avenue Land, Westville

Lot size: 98,010 sq. ft.

Price by negotiation (contact listing agent)

Approx. 2.3 acres of commercially zoned land for build-to-suit; located immediately off Exit 21; supported by Highway Commercial (C3) zoning

Contact Matt Ross



8990 Highway 7, Head of Jeddore

2,500 sq. ft.

Price by negotiation (contact listing agent)

Retail lease opportunity in Forest Hill Shopping Centre; end unit with ample parking; high visibility with signage opportunities; freshly painted interior

Contact Geof Ralph



5426 Portland Place, Halifax

+/- 2,600 sq. ft.

Price by negotiation (contact listing agent)

North-end commercial space at The Anthony; suitable for a variety of uses; large front windows; **leasing incentives available**

Contact Geof Ralph



448 Main Street, Kentville

4,000 sq. ft.

Price by negotiation (contact listing agent)

Situated in Kentville's charming downtown; garage and storage space available; on-site parking; supported by General Commercial (C-1) Zoning

Contact Geof Ralph

FOR SALE | ALL CLASSES



31 Mount Hope Avenue, Dartmouth

Building: 15,100 sq. ft. / Lot: 59,500 sq. ft.
\$4,500,000

Great investment opportunity; fully occupied with long-term tenant; large lot with fenced yard; three phase power and two 10 tonne cranes

Contact Ian Stanley & Matt Ross



Commercial Land, Fall River

Six parcels of land totalling 15 acres
\$2,699,000

Commercial land with direct access to two major highways; 800' of highway frontage; land is supported by two distinct zoning categories

Contact Geof Ralph



Commercial Land, Amherst

Two parcels of land totalling 12.6 acres
\$199,000

Commercial development opportunity; exceptional highway exposure; supported by Highway Commercial Zone (CHwy)

Contact Geof Ralph

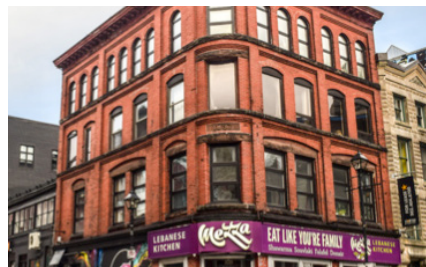


Downtown Dartmouth

Six parcels of land totalling 1.63-acres
Price by negotiation (contact listing agent)

Redevelopment opportunity in downtown Dartmouth; six parcels of land; prime location with exceptionally low residential vacancy rates

Contact Geof Ralph



Blowers & Argyle Street, Halifax

Building: 17,976 sq. ft. / Lot: 5,408 sq. ft.
Price by negotiation (contact listing agent)

Expanding from Barrington Street up Blowers Street to Argyle; three buildings totalling 18,000 sq. ft. of rentable area; excellent investment opportunity

Contact Geof Ralph



450 Highway No. 2, Enfield

1.12 acres; approved 42-unit building
\$1,300,000

Development opportunity; approved plan for 42-unit residential building; plans in place for two additional 42-unit building on adjacent site

Contact Geof Ralph



Lot 2A, 450 Highway 2, Enfield

Lot: 5.79 acres
\$3,500,000

Commercial development land located in the growing community of Enfield; combination zoning of R2 and MC; allows for various development

Contact Geof Ralph



114 Acadia Avenue, Stellarton

Building: 255,000 sq. ft.
\$8,500,000

Cutting-edge industrial space on over 12.5 acres of land; built in 1965; completely renovated in 2017

Contact Geof Ralph

CONTACT US

Brian Toole

Principal, Tenant Advisory

☎ (902) 476-6898

✉ brian@partnersglobal.com

Ian Stanley

Broker / Principal, Investments & Capital Markets

☎ (902) 229-7100

✉ ian@partnersglobal.com

Geof Ralph

Executive Vice President

☎ (902) 877-9324

✉ geof@partnersglobal.com

Jacquelyn Moriarty

Investments & Capital Markets

☎ (902) 440-3937

✉ jacquelyn@partnersglobal.com

Erin Crosby

Senior Advisor, Tenant Advisory

☎ (902) 877-1849

✉ erin@partnersglobal.com

Rod Winters

Senior Advisor

☎ (902) 223-5781

✉ rod@partnersglobal.com

Matt Ross

Associate Advisor

☎ (902) 324-1101

✉ matt@partnersglobal.com

Alison Sowerby

Sales & Marketing Coordinator

☎ (902) 580-0577

✉ alison@partnersglobal.com

Rileigh Pugh-Toole

Property & Office Coordinator

☎ (902) 444-4004

✉ rileigh@partnersglobal.com

Partners Global Corporate Real Estate (Partners Global) and its agents and affiliates do not warrant, represent or guarantee the accuracy, completeness or validity of the information provided herein. Parties interested in the property are to conduct their own independent investigations to determine the suitability of the property for their intended use and are strongly urged to discuss the property with their professional advisors. Partners Global expressly disclaims any liability arising out of any errors and omissions in the information. Prospective clients should not confine themselves to the contents but should make their own enquiries to satisfy themselves in all respects. Partners Global will not accept any responsibility should any details prove to be incomplete or incorrect.

partnersglobal.com

