

FOR SALE

# 21 FAIRWAY DRIVE GREENVIEW BUSINESS PARK, HANWELL, NB

Commercial investment opportunity  
in high-growth business park



**Mark LeBlanc**

☎ (506) 260-7203  
✉ [mark@partnersglobal.com](mailto:mark@partnersglobal.com)

**Andrew LeBlanc**

☎ (506) 478-0011  
✉ [andrew@partnersglobal.com](mailto:andrew@partnersglobal.com)

[partnersglobal.com](http://partnersglobal.com)



## Commercial investment opportunity in high-growth business park

Looking to own or invest a high quality industrial and office combination property in the Fredericton area? Look no further! This premium-quality building, completed in 2021, is strategically located just outside city limits in the rapidly growing Greenview Business Park. The park provides seamless access to the Trans-Canada Highway and the Fredericton municipality via the Hanwell Road arterial.

Situated on one-acre, this 15,462 sq. ft., multi-tenanted building offers exceptional curb appeal and a well-thought-out design. The building maximizes space efficiency by offering upper-level offices for units facing Fairway Drive. Currently, the property is fully leased, presenting an ideal opportunity for owner-occupiers or new long-term tenants. Additional features of this contemporary property include grade-level loading, 14-ft ceiling heights in warehouse areas, and ample on-site parking.



Fully-Leased,  
Owner Occupier  
Potential



Recently Built  
in 2021



Grade Loading

LISTING ID	25237
ADDRESS	21 Fairway Drive, Hanwell
LOCATION	Greenview Business Park
PID	75538702
PROPERTY TYPE	Office / Light industrial
LOT SIZE	43,799 sq. ft. (1.00-acre)
BUILDING SIZE	15,462 sq. ft.
NO. OF FLOORS	Combination of one and two-stores
YEAR BUILT	2021
LOADING	Grade loading
PARKING	Ample, free on-site parking
OFFERING PRICE	\$2,495,000 plus HST





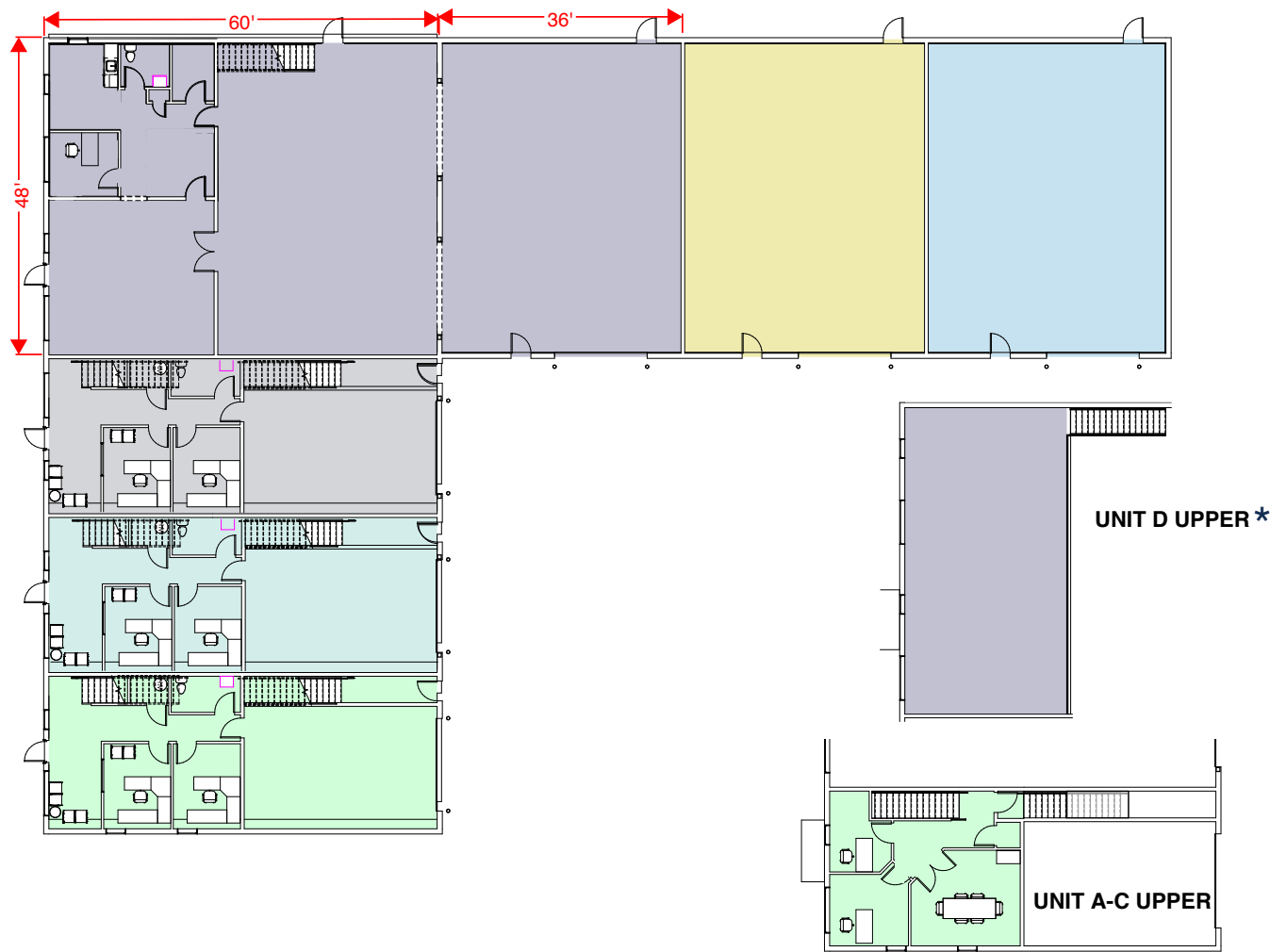
# Property Highlights

- Quality office and light industrial building constructed in 2021
- Currently fully leased with owner occupier potential
- Wood frame structure on concrete slab foundation
- Vertical metal siding
- HVAC: Mini-split units in office units; ceiling-mounted space heaters to warehouse units
- 14' ceiling heights in warehouse areas
- High quality and contemporary finishes throughout office space
- Six grade level loading doors located at the rear of the property
- LED lighting throughout
- Ample on-site parking to front and rear of the building (gravel)
- Convenient and quick access to Trans-Canada Highway and the Fredericton municipality via the Hanwell Road arterial



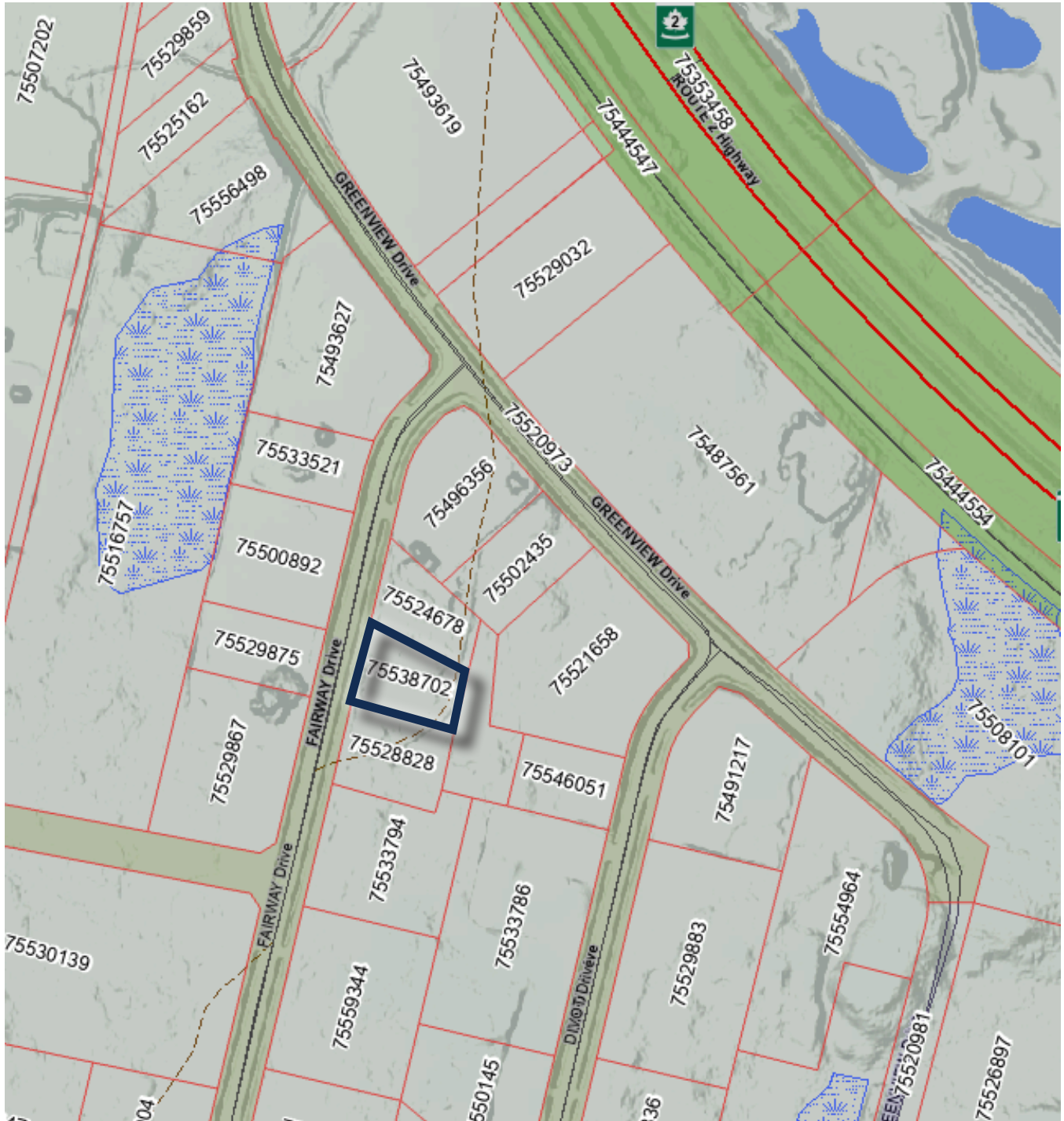
# Building Plan

21 Fairway Drive, Hanwell: 15,462 sq. ft.



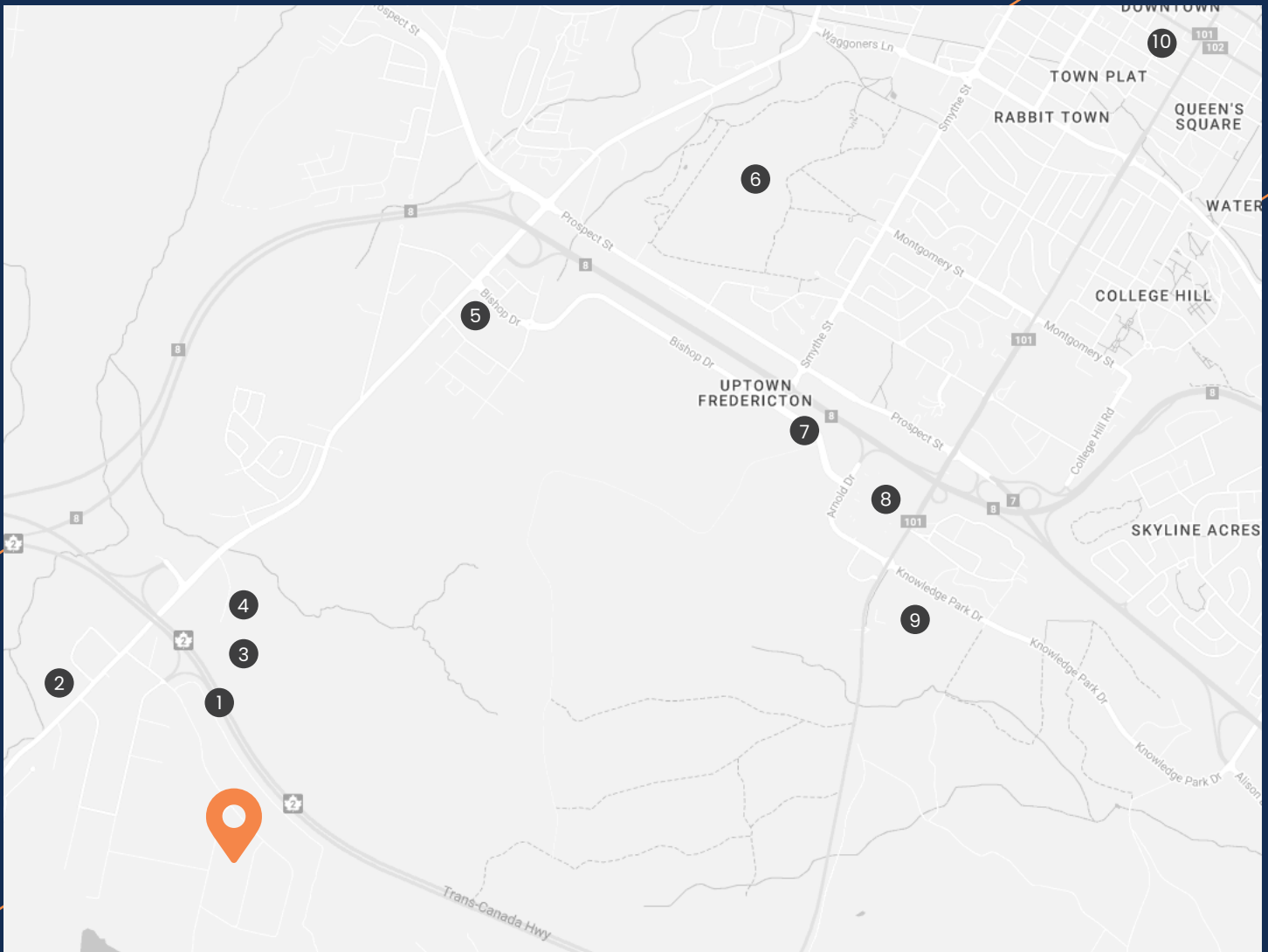
\* recently renovated to office and kitchen space

21 Fairway Drive, Hanwell, New Brunswick





# Surrounding Area



① Trans-Canada Highway

② Porter's Diner

③ Radisson Kingswood Hotel & Suites

④ Kingswood Entertainment Centre

⑤ Tim Horton's / Pür & Simple

⑥ Odell Park

⑦ Starbucks / Staples / Sobeys

⑧ Regent Mall

⑨ Corbett Centre

⑩ Downtown Fredericton

Trans-Canada Highway  
DRIVE TIME: 3 MINUTES

Uptown Fredericton  
DRIVE TIME: 8-10 MINUTES

Downtown Fredericton  
DRIVE TIME: 12-15 MINUTES

Fredericton International  
Airport  
DRIVE TIME: 18-24 MINUTES



**KITCHEN AREA**



**OFFICE SPACE**



**WASHROOM**



**REAR LOADING**



**OFFICE SPACE**





**Mark LeBlanc**

📞 (506) 260-7203  
✉️ mark@partnersglobal.com



**Andrew LeBlanc**

📞 (506) 478-0011  
✉️ andrew@partnersglobal.com

Partners Global Corporate Real Estate (Partners Global) and its agents and affiliates do not warrant, represent or guarantee the accuracy, completeness or validity of the information provided herein. Parties interested in the property are to conduct their own independent investigations to determine the suitability of the property for their intended use and are strongly urged to discuss the property with their professional advisors. Partners Global expressly disclaims any liability arising out of any errors and omissions in the information. Prospective clients should not confine themselves to the contents but should make their own enquiries to satisfy themselves in all respects. Partners Global will not accept any responsibility should any details prove to be incomplete or incorrect.