

FOR LEASE

114 WOODLAWN PLAZA

DARTMOUTH, NOVA SCOTIA

250 to 3,283 sq. ft. of retail space
available in busy shopping plaza



Unit 133
954 sq. ft.

Unit 134
250 sq. ft.

Unit 135
2,079 sq. ft.

Rod Winters

☎ (902) 223-5781
✉ rod@partnersglobal.com

Matt Ross

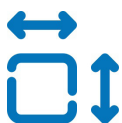
☎ (902) 324-1101
✉ matt@partnersglobal.com



250 to 3,283 sq. ft. of retail space available in busy shopping plaza

Located in the high-traffic Woodlawn Plaza in Dartmouth, this professionally managed retail centre offers multiple leasing opportunity suited for a wide range of businesses. With three units spanning from 250 to 3,283 sq. ft., prospective tenants have flexibility to lease units individually or combined spaces to meet specific requirements.

Unit 135 (2,079 sq. ft.) is an open-concept retail space ideal for a grocer. Unit 134 (250 sq. ft.) is a compact storefront ideal for a small café or service-based retailer. Unit 133 (954) is configured as a storage space with potential to combine with Unit 134 to create 1,204 sq. ft. of retail space. Whatever your business needs are, the plaza's high visibility, prominent signage opportunities, ample on-site parking, and convenient access to multiple public transit routes all set your business up for success.



250 to 3,282
sq. ft. Available

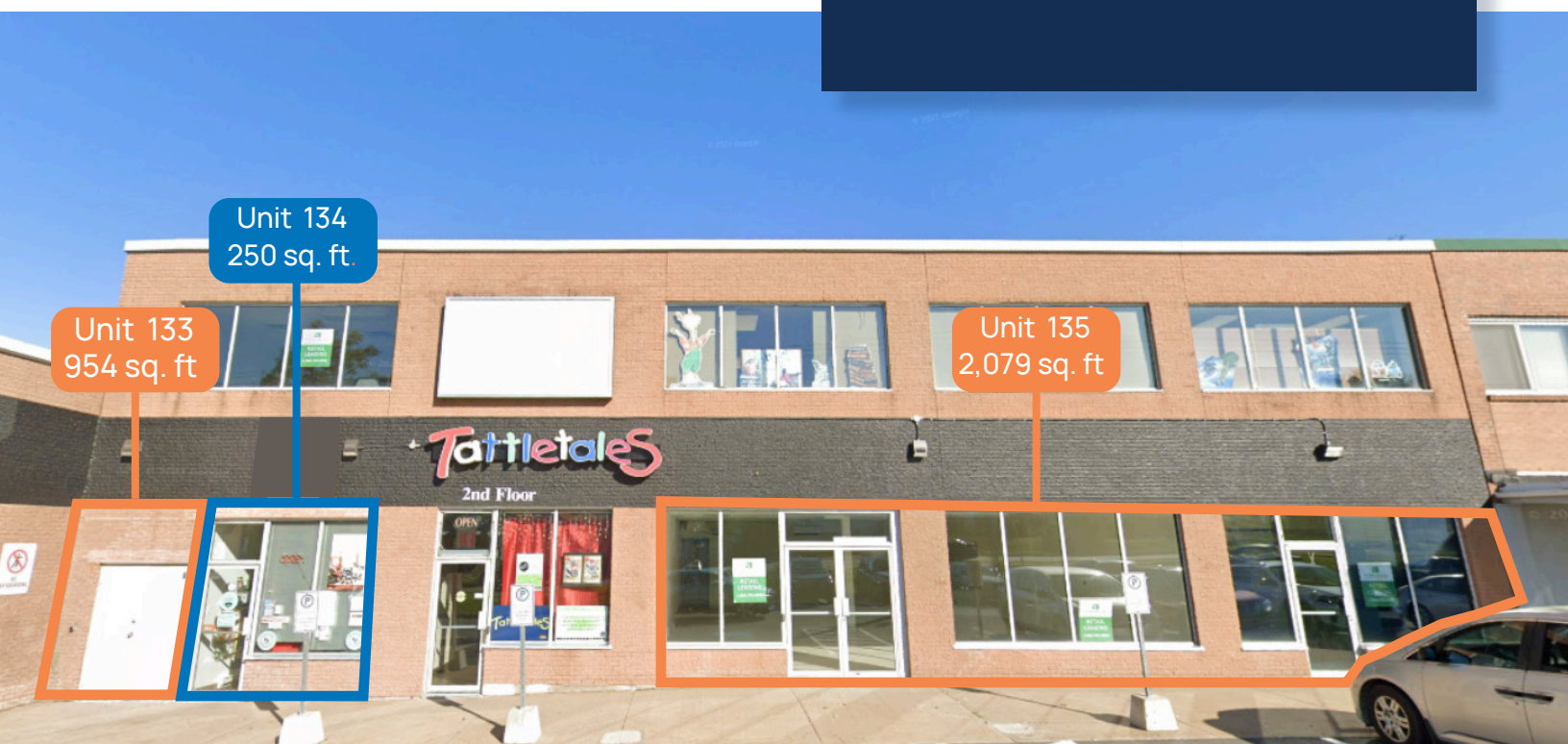


High Vehicular
Area



Free, On-Site
Parking

LISTING ID	10442
ADDRESS	114 Woodlawn Road, Dartmouth
PROPERTY TYPE	Retail
BUILDING NAME	Woodlawn Plaza
BUILDING SIZE	158,058 sq. ft.
SIZE AVAILABLE	Unit 133 - 954 sq. ft. Unit 134 - 250 sq. ft. Unit 135 - 2,079 sq. ft.
FLOOR LOCATION	Ground level
AVAILABILITY	With 30 days notice
PARKING	Ample, free on-site parking
BASE RENT	Contact listing agents
ADDITIONAL RENT	\$10.50 psf

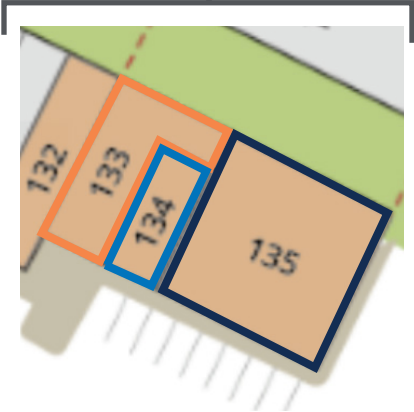


Site Plan

Woodlawn Plaza, Dartmouth

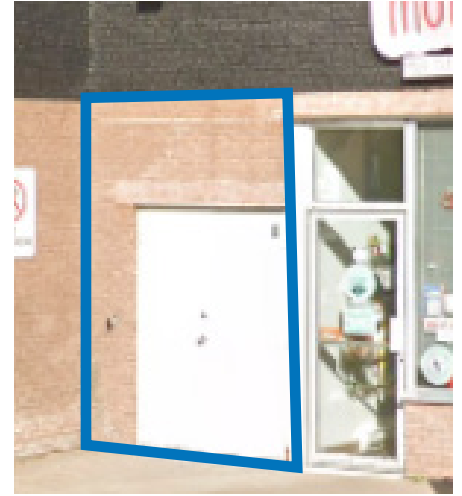


- UNIT 133 | 954 SQ. FT.
- UNIT 134 | 250 SQ. FT.
- UNIT 135 | 2,079 SQ. FT.



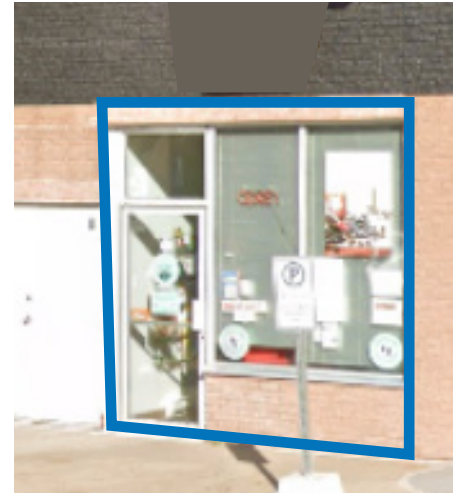
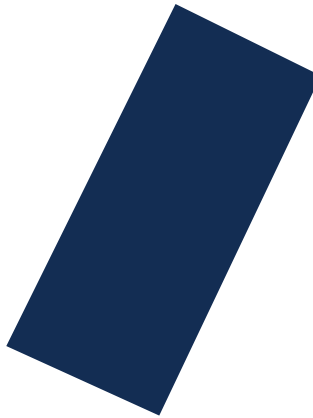
Unit 133

- 954 sq. ft. of designated storage space
- Front-loading access with steel double doors
- Previously used for back-of-house storage
- Could be converted into a retail or service space



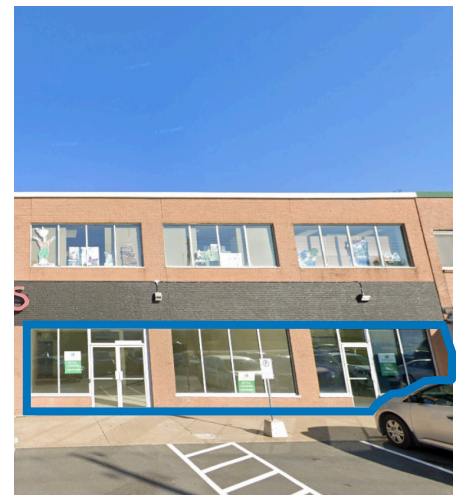
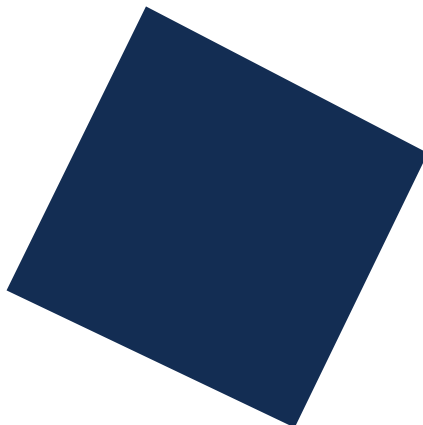
Unit 134

- 250 sq. ft. of compact retail space with large storefront window
- Ideal for a small café, bubble tea, or small service shop
- Small front seating area
- Service counter with sink
- One washroom

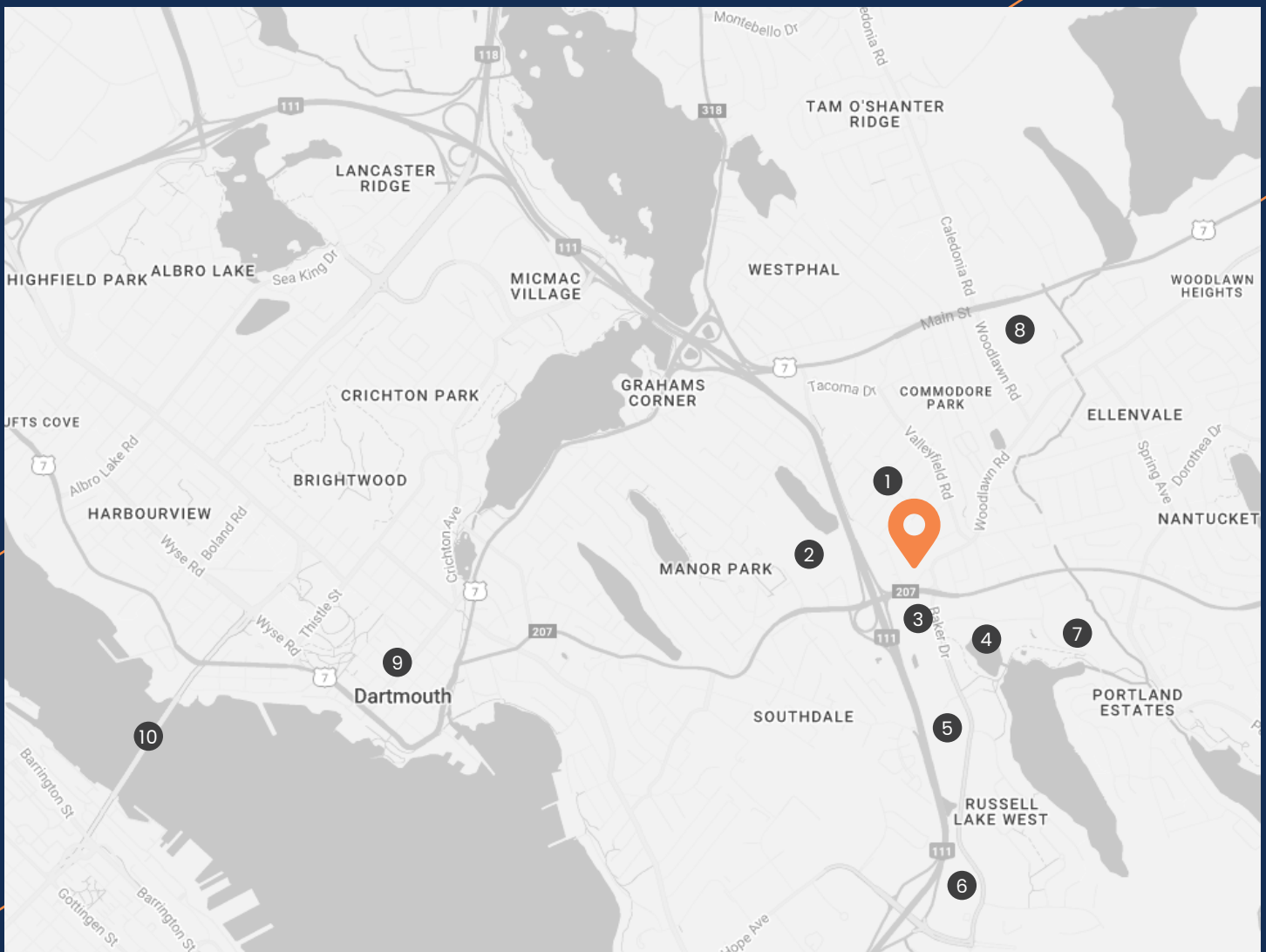


Unit 135

- 2,079 sq. ft. of open-concept space with large storefront windows
- Excellent for a grocery store
- Built-in front counter
- Rear prep kitchen area (no equipment included)
- One washroom
- Durable epoxy flooring



Surrounding Amenities



① Woodlawn Park

② Penhorn Plaza

③ McDonald's

④ Portland Lakes Trail

⑤ Parkland At The Lakes (Seniors Residents)

⑥ Access Nova Scotia

⑦ Woodlawn Public Library

⑧ NSCC - Akerley Campus

⑨ Downtown Dartmouth

⑩ Angus L. MacDonald Bridge

Nova Scotia Highway 111
DRIVE TIME: 2 MINUTES

Downtown Dartmouth
DRIVE TIME: 7-10 MINUTES

Cole Harbour
DRIVE TIME: 8-12 MINUTES

Downtown Halifax
DRIVE TIME: 16-24 MINUTES



Rod Winters

☎ (902) 444-4004
 📱 (902) 223-5781
 ✉ rod@partnersglobal.com



Matt Ross

☎ (902) 444-4004
 📱 (902) 324-1101
 ✉ matt@partnersglobal.com

Partners Global Corporate Real Estate (Partners Global) and its agents and affiliates do not warrant, represent or guarantee the accuracy, completeness or validity of the information provided herein. Parties interested in the property are to conduct their own independent investigations to determine the suitability of the property for their intended use and are strongly urged to discuss the property with their professional advisors. Partners Global expressly disclaims any liability arising out of any errors and omissions in the information. Prospective clients should not confine themselves to the contents but should make their own enquiries to satisfy themselves in all respects. Partners Global will not accept any responsibility should any details prove to be incomplete or incorrect.

