



NOVA SCOTIA LISTING REPORT

June 2025

Partners Global Corporate Real Estate Inc.

2085 Maitland Street, Suite 300, Halifax, NS B3K 2Z8

📞 902 444 4004

✉️ halifax@partnersglobal.com

FEATURED LISTINGS

NEW | FOR SUBLEASE



25 PORTLAND STREET, DARTMOUTH

Size	2,187 sq. ft.
Price	Contact the listing agent
Features	<ul style="list-style-type: none"> » Currently configured as a high-quality bakery-style kitchen with retail space » Ideally located in high-traffic pedestrian area » Prominent signage opportunities along Portland Street enhance brand presence and visibility » Zoned Downtown Dartmouth, allowing for a diverse range of uses

Rod Winters | 902-223-5781 Matt Ross | 902-324-1101

NEW | FOR SALE



6 & 11 WADDELL AVENUE, DARTMOUTH

Size	Two buildings totaling 19,684 sq. ft.
Price	\$4,275,000
Features	<ul style="list-style-type: none"> » Ideally located close to MacKay Bridge » 6 Waddell Avenue » 7,849 sq. ft. primarily configured as warehouse with small office area » Recent renovations include new roof, insulation, and siding » 11 Waddell Avenue » 11,844 sq. ft. property features a mix of warehouse, office and retail

Geof Ralph | 902-877-9324

NEW | FOR LEASE



250 BROWNLOW AVENUE, DARTMOUTH

Size	Unit 20 - 2,000 sq. ft.
Price	\$22.99 psf (gross)
Features	<ul style="list-style-type: none"> » Versatile office and commercial space located at Parkway Place in the City of Lakes Business Park » Excellent visibility and signage opportunities » Convenient access to the highway and major transportation routes » Zoned General Industrial Zoning (I-2) » Ample, free on-site parking

Matt Ross | 902-324-1101

FOR LEASE

FOR SALE

OFFICE

COMMERCIAL

INDUSTRIAL

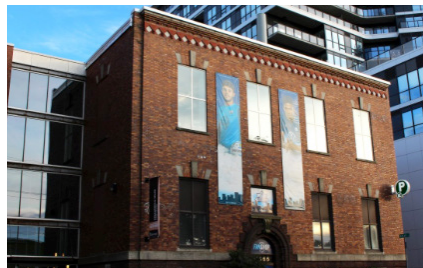
ALL CLASSES

NEW LISTING

**250 BROWNLOW AVENUE, DARTMOUTH****Size** Unit 20 - 2,000 sq. ft.**Price** \$22.99 psf (gross)

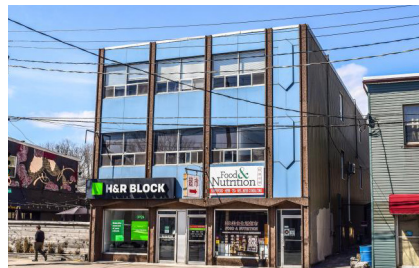
On-site parking; high-profile signage opportunities; excellent exposure; quick access to highway and both harbour bridges

Matt Ross | 902-324-1101

**5562 SACKVILLE STREET, HALIFAX****Size** +/- 13,500 sq. ft.**Price** By negotiation, contact listing agent

Office space for available sublease in downtown Halifax; available fully furnished; surrounded by amenities; head lease expires August 31, 2027

Geof Ralph | 902-877-9324 Matt Ross | 902-324-1101

**6265 QUINPOOL ROAD, HALIFAX****Size** 1,608 sq. ft.**Price** By negotiation, contact listing agent

Third-floor office space for lease; amenity rich area; some off-street parking available; modern finishes including new flooring

Matt Ross | 902-324-1101

**1801 HOLLIS STREET, HALIFAX****Size** 6,882 sq. ft.**Price** By negotiation, contact listing agent

Bright office / retail space in Class A office tower downtown Halifax; Ground floor; modern leaseholds in place with high ceilings and expansive windows

Geof Ralph | 902-877-9324

**99 WYSE ROAD, DARTMOUTH****Size** 743 to 8,591 sq. ft.**Price** By negotiation, contact listing agent

Prestigious Class A office tower; various layouts available including raw space and turnkey solutions; amenity rich building and surrounding area

Geof Ralph | 902-877-9324

**1877 HOLLIS STREET, HALIFAX****Size** +/- 6,700 sq. ft.**Price** By negotiation, contact listing agent

Beautiful loft-style office space with exposed brick and wooden beams; situated at the doorstep of downtown Halifax; available immediately

Geof Ralph | 902-877-9324

**250 BROWNLOW AVENUE, DARTMOUTH****Size** 5,888 sq. ft.**Price** By negotiation, contact listing agent

On-site parking; high-profile signage opportunities; excellent exposure; quick access to highway and both harbour bridges

Geof Ralph | 902-877-9324

**1657 BEDFORD ROW, HALIFAX****Size** 3,028 to 6,514 sq. ft.**Price** By negotiation, contact listing agent

Perfectly situated in the heart of downtown Halifax; thoughtfully designed suites with perimeter offices and meeting rooms; four parking spots available

Geof Ralph | 902-877-9324

FOR **LEASE** FOR **SALE**

OFFICE

COMMERCIAL

INDUSTRIAL

ALL CLASSES



7020 MUMFORD ROAD, HALIFAX

Size 2,650 to 5,200 sq. ft.

Price By negotiation, contact listing agent

On-site parking available; well-located, close to amenities and public transportation; direct and sublease options available

Geof Ralph | 902-877-9324



1801 HOLLIS STREET, HALIFAX

Size 1,769 to 10,717 sq. ft.

Price By negotiation, contact listing agent

Move-in ready; fully built-out space, or build to suit options; Class A office tower downtown; scenic views; broker incentive program

Geof Ralph | 902-877-9324

FOR LEASE

FOR SALE

OFFICE

COMMERCIAL

INDUSTRIAL

ALL CLASSES

NEW LISTING

**25 PORTLAND STREET, DARTMOUTH****Size** 2,187 sq. ft.**Price** By negotiation, contact listing agent

A spacious bakery-style kitchen and retail space for sublease; high-visibility area with signage opportunities; head lease expired December 31, 2033

Matt Ross | 902-324-1101 Rod Winters | 902-223-5781

NEW LISTING

**8990 HIGHWAY 7, HEAD OF JEDDORE****Size** 4,500 sq. ft.**Price** By negotiation, contact listing agent

Retail lease opportunity in Forest Hill Shopping Centre; ample paved parking; high visibility with signage opportunities

Geof Ralph | 902-877-9324

**80 PORTLAND STREET, DARTMOUTH****Size** 4,444sq. ft.**Price** By negotiation, contact listing agent

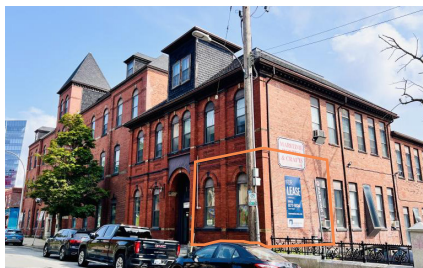
Bright retail space for lease in sought after downtown Dartmouth; High-visibility signage opportunities; currently configured as a modern fitness studio

Geof Ralph | 902-877-9324

**114 WOODLAND ROAD, DARTMOUTH****Size** 1,728 to 6,784 sq. ft.**Price** By negotiation, contact listing agent

Bright 6,784 sq. ft. retail space in Wood-lawn Plaza with demising options available; High-visibility signage opportunities; ample on-site parking; high vehicular area

Rod Winters | 902-223-5781 Matt Ross | 902-324-1101

**1521 GRAFTON STREET, HALIFAX****Size** Up to 2,138 sq. ft.**Price** By negotiation, contact listing agent

Up to 2,138 sq. ft. of bright retail space (with potential to demise); high traffic pedestrian area; on-site parking; available immediately

Geof Ralph | 902-877-9324

**1801 HOLLIS STREET, HALIFAX****Size** 6,882 sq. ft.**Price** By negotiation, contact listing agent

Located in iconic office downtown Halifax; bright ground floor office or retail space; modern leaseholds in place; on-site parking; available within 60 days

Geof Ralph | 902-877-9324

**3208 ISLEVILLE STREET. HALIFAX****Size** +/- 1,750 sq. ft.**Price** By negotiation, contact listing agent

Bright, ground floor space; located in desired Hydrostone Market District; on-site parking; supported by Corridor (COR) zoning; ideal for small business

Geof Ralph | 902-877-9324

LEASED

**8990 HIGHWAY 7, HEAD OF JEDDORE****Size** 2,500 sq. ft.**Price** By negotiation, contact listing agent

Retail lease opportunity in Forest Hill Shopping Centre; end unit with ample paved parking; high visibility with signage opportunities; freshly painted interior

Geof Ralph | 902-877-9324

FOR **LEASE**

FOR **SALE**

OFFICE

COMMERCIAL

INDUSTRIAL

ALL CLASSES



1521-1531 GRAFTON STREET, HALIFAX

Size 525 to 5,250 sq. ft.

Price By negotiation, contact listing agent

Office and retail space in downtown Halifax; versatile layout to accommodate tenant's needs; high-profile retail corner available

Geof Ralph | 902-877-9324

FOR **LEASE**

FOR **SALE**

OFFICE

COMMERCIAL

INDUSTRIAL

ALL CLASSES



667 BARNES ROAD, ENFIELD

Size 29,074 sq. ft.

Price By negotiation, contact listing agent

Entire building for lease; eight drive-in and three truck level doors; built out office, lunchroom, and kitchenette; adjacent to airport apron

Geof Ralph | 902-877-9324



40-46 BORDEN AVENUE, DARTMOUTH

Size 4,100 - 30,082 sq. ft.

Price By negotiation, contact listing agent

Up to 34,000 sq. ft. available; offers various demising options; dock and grade loading; 20 ft clear heights; available January 2025

Geof Ralph | 902-877-9324



192 JOSEPH ZATZMAN DRIVE, DARTMOUTH

Size 1,931sq. ft.

Price By negotiation, contact listing agent

Well-located within Burnside Industrial Park; dock loading available; 18' clear heights; ample, on-site parking; ideal for service-oriented users

Geof Ralph | 902-877-9324



196 JOSEPH ZATZMAN DRIVE, DARTMOUTH

Size 1,942 to 9,994 sq. ft.

Price By negotiation, contact listing agent

Various leasing options available; side double door loading and three dock doors; availability dates vary, contact listing agents for more details

Geof Ralph | 902-877-9324

FOR LEASE

FOR SALE

OFFICE

COMMERCIAL

INDUSTRIAL

ALL CLASSES

NEW LISTING



6 & 11 WADDELL AVENUE, DARTMOUTH

Size Building: 6,313 sq. ft.
Lot: 1.6 acres

Price \$4,275,000

Newly renovated mixed-used building and fully fenced lot in Burnside Industrial Park; ideal for owner-occupier

Geof Ralph | 902-877-9324



35 ISNOR DRIVE, DARTMOUTH

Size Building: 6,313 sq. ft.
Lot: 1.6 acres

Price \$3,950,000

Newly renovated mixed-used building and fully fenced lot in Burnside Industrial Park; ideal for owner-occupier

Geof Ralph | 902-877-9324



5514 CUNARD STREET, HALIFAX

Size Building: 5,755 sq. ft.
Lot: 4,586 sq. ft.

Price \$1,100,000

Commercial properties over two contiguous lots in trendy North End Halifax; excellent redevelopment site; ready for a new inspired vision

Matt Ross | 902-324-1101 Ian Stanley | 902-299-7100

UNDER OFFER



2570 & 2578 AGRICOLA STREET, HALIFAX

Size Building: 5,400 sq. ft.
Lot: 5,128 sq. ft.

Price \$2,950,000

Three-storey office property; turnkey office space; ideal for an owner-occupier; sale includes separate vacant parking lot providing off-street parking

Rod Winters | 902-223-5781 Matt Ross | 902-324-1101

UNDER OFFER



10501 CABOT TRAIL, BELLE CÔTE

Size 5.23 acres

Price \$1,275,000

Five meticulously crafted tiny homes located on a stunning 5.23-acre oceanfront property in Cape Breton; opportunities for expansion

Geof Ralph | 902-877-9324 Matt Ross | 902-324-1101



233 MAIN STREET, LIVERPOOL

Size Building: 5,320 sq. ft.
Lot: 5,106 sq. ft.

Price \$250,000

Mixed-use investment property featuring commercial space and a two-bedroom apartment; three to four parking spaces; well-located in town

Matt Ross | 902-324-1101



150 HORNE SETTLEMENT ROAD, ENFIELD

Size Building: 7,970 sq. ft.
Lot: 2.88 acres

Price \$545,000

Warehouse and operational greenhouse; versatile space equipped with dock and grade loading; situated 850 meters from NS hwy 102

Geof Ralph | 902-877-9324

UNDER OFFER



COMMERCIAL LAND, FALL RIVER

Size Six parcels of land totaling 15 acres

Price \$2,699,000

Commercial land with direct access to two major highways; 800' of highway frontage; land is supported by two distinct zoning categories

Geof Ralph | 902-877-9324

FOR **LEASE**

FOR **SALE**

OFFICE

COMMERCIAL

INDUSTRIAL

ALL CLASSES



DOWNTOWN DARTMOUTH

Size Six parcels of land totaling
1.63-acres

Price By negotiation, contact listing agent

Redevelopment opportunity in downtown Dartmouth; six parcels of land; prime location with exceptionally low residential vacancy rates

Geof Ralph | 902-877-9324



114 ACADIA AVENUE, STELLARTON

Size 255,000 sq. ft.

Price \$8,500,000 sq. ft.

Newly renovated mixed-used building and fully fenced lot in Burnside Industrial Park; ideal for owner-occupier

Geof Ralph | 902-877-9324

CONTACT US

Brian Toole

Principal, Tenant Advisory

📞 (902) 476-6898
✉️ brian@partnersglobal.com

Alison Sowerby

Vice President, Advisory Services

📞 (902) 580-0577
✉️ alison@partnersglobal.com

Jacquelyn Moriarty

Associate Advisor

📞 (902) 440-3937
✉️ jacquelyn@partnersglobal.com

Ian Stanley

Broker, Principal

📞 (902) 229-7100
✉️ ian@partnersglobal.com

Rod Winters

Senior Advisor

📞 (902) 223-5781
✉️ rod@partnersglobal.com

Emma Hachey

Sales & Marketing Coordinator

📞 (902) 300-9625
✉️ emma@partnersglobal.com

Geof Ralph

Executive Vice President

📞 (902) 877-9324
✉️ geof@partnersglobal.com

Matt Ross

Associate Advisor

📞 (902) 324-1101
✉️ matt@partnersglobal.com

Rileigh Pugh-Toole

Property & Office Coordinator

📞 (902) 444-4004
✉️ rileigh@partnersglobal.com

Partners Global Corporate Real Estate (Partners Global) and its agents and affiliates do not warrant, represent or guarantee the accuracy, completeness or validity of the information provided herein. Parties interested in the property are to conduct their own independent investigations to determine the suitability of the property for their intended use and are strongly urged to discuss the property with their professional advisors. Partners Global expressly disclaims any liability arising out of any errors and omissions in the information. Prospective clients should not confine themselves to the contents but should make their own enquiries to satisfy themselves in all respects. Partners Global will not accept any responsibility should