



# NOVA SCOTIA LISTING REPORT

---

August 2025

**Partners Global Corporate Real Estate Inc.**

2085 Maitland Street, Suite 300, Halifax, NS B3K 2Z8

📞 902 444 4004

✉️ [halifax@partnersglobal.com](mailto:halifax@partnersglobal.com)



**PARTNERS GLOBAL**  
CORPORATE REAL ESTATE

## FEATURED LISTINGS

### NEW | FOR LEASE



#### 35 ISNOR DRIVE, DARTMOUTH

<b>Size</b>	Building: 4,200 sq. ft.   Lot: 45,000 sq. ft.
<b>Price</b>	Contact the listing agents
<b>Features</b>	<ul style="list-style-type: none"> <li>» Well-maintained property in the heart of Burnside Industrial Park</li> <li>» Large fenced in gravel lot</li> <li>» Newly renovated office space including 11 private offices, a full kitchen, reception area and two bathrooms</li> <li>» Available December 1, 2025</li> <li>» Ample, on-site parking</li> </ul>

Geof Ralph | 902-877-9324

### NEW | FOR SALE



#### 40 ORION COURT, DARTMOUTH

<b>Size</b>	Building: 8,400 sq. ft.   Lot: 2.48-acres
<b>Price</b>	\$3,950,000
<b>Features</b>	<ul style="list-style-type: none"> <li>» The building features a functional office layout with well appointed reception, kitchens and washrooms</li> <li>» Rear warehouse features loading and storage mezzanine</li> <li>» Adjacent lot currently leased to transportation company</li> <li>» Opportunity to purchase existing business and equipment</li> <li>» Located in Woodside Industrial Park</li> </ul>

Geof Ralph | 902-877-9324

### NEW | FOR LEASE



#### 10 ILSLEY AVENUE, DARTMOUTH

<b>Size</b>	5,682 sq. ft.
<b>Price</b>	Contact the listing agents
<b>Features</b>	<ul style="list-style-type: none"> <li>» Office and warehouse space with 53' trailer access</li> <li>» Two dock loading doors</li> <li>» Excellent visibility with signage opportunity along busy arterial road</li> <li>» Central Burnside location with easy access to highways, bridges, and amenities</li> <li>» Available for January 2026</li> </ul>

Geof Ralph | 902-877-9324

FOR LEASE

FOR SALE

OFFICE

COMMERCIAL

INDUSTRIAL

ALL CLASSES



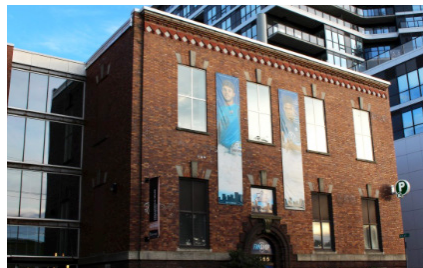
### 250 BROWNLOW AVENUE, DARTMOUTH

**Size** Unit 20 - 2,000 sq. ft.

**Price** \$22.99 psf (gross)

On-site parking; high-profile signage opportunities; excellent exposure; quick access to highway and both harbour bridges

Matt Ross | 902-324-1101



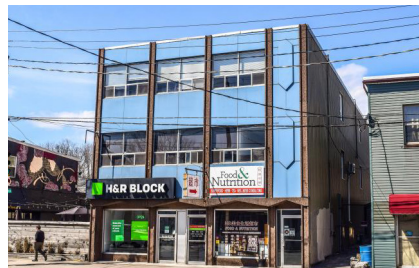
### 5562 SACKVILLE STREET, HALIFAX

**Size** +/- 13,500 sq. ft.

**Price** By negotiation, contact listing agent

Office space for available sublease in downtown Halifax; available fully furnished; surrounded by amenities; head lease expires August 31, 2027

Geof Ralph | 902-877-9324 Matt Ross | 902-324-1101



### 6265 QUINPOOL ROAD, HALIFAX

**Size** 1,608 sq. ft.

**Price** By negotiation, contact listing agent

Third-floor office space for lease; amenity rich area; some off-street parking available; modern finishes including new flooring

Matt Ross | 902-324-1101



### 1801 HOLLIS STREET, HALIFAX

**Size** 6,882 sq. ft.

**Price** By negotiation, contact listing agent

Bright office / retail space in Class A office tower downtown Halifax; Ground floor; modern leaseholds in place with high ceilings and expansive windows

Geof Ralph | 902-877-9324



### 99 WYSE ROAD, DARTMOUTH

**Size** 743 to 8,591 sq. ft.

**Price** By negotiation, contact listing agent

Prestigious Class A office tower; various layouts available including raw space and turnkey solutions; amenity rich building and surrounding area

Geof Ralph | 902-877-9324



### 1877 HOLLIS STREET, HALIFAX

**Size** +/- 6,700 sq. ft.

**Price** By negotiation, contact listing agent

Beautiful loft-style office space with exposed brick and wooden beams; situated at the doorstep of downtown Halifax; available immediately

Geof Ralph | 902-877-9324



### 250 BROWNLOW AVENUE, DARTMOUTH

**Size** 5,888 sq. ft.

**Price** By negotiation, contact listing agent

On-site parking; high-profile signage opportunities; excellent exposure; quick access to highway and both harbour bridges

Geof Ralph | 902-877-9324



### 1657 BEDFORD ROW, HALIFAX

**Size** 3,028 to 6,514 sq. ft.

**Price** By negotiation, contact listing agent

Perfectly situated in the heart of downtown Halifax; thoughtfully designed suites with perimeter offices and meeting rooms; four parking spots available

Geof Ralph | 902-877-9324

FOR LEASE

FOR SALE

OFFICE

COMMERCIAL

INDUSTRIAL

ALL CLASSES



### 1801 HOLLIS STREET, HALIFAX

**Size** 1,769 to 10,717 sq. ft.

**Price** By negotiation, contact listing agent

Move-in ready; fully built-out space, or build to suit options; Class A office tower downtown; scenic views; broker incentive program

Geof Ralph | 902-877-9324

FOR LEASE

FOR SALE

OFFICE

COMMERCIAL

INDUSTRIAL

ALL CLASSES

**114 WOODLAND ROAD, DARTMOUTH****Size** 942 sq. ft.**Price** By negotiation, contact listing agent

Open concept layout featuring prominent storefront windows High-visibility signage opportunities; ample on-site parking; high vehicular area; Unit 32

Rod Winters | 902-223-5781 Matt Ross | 902-324-1101

**114 WOODLAND ROAD, DARTMOUTH****Size** 247 to 3,258 sq. ft.**Price** By negotiation, contact listing agent

Three units spanning 250 to 3,283 sq. ft. of retail space; High-visibility signage opportunities; ample on-site parking; high vehicular area; Unit 133, 134, and 135

Rod Winters | 902-223-5781 Matt Ross | 902-324-1101

**25 PORTLAND STREET, DARTMOUTH****Size** 2,187 sq. ft.**Price** By negotiation, contact listing agent

A spacious bakery-style kitchen and retail space for sublease; high-visibility area with signage opportunities; head lease expired December 31, 2033

Matt Ross | 902-324-1101 Rod Winters | 902-223-5781

**8990 HIGHWAY 7, HEAD OF JEDDORE****Size** 4,500 sq. ft.**Price** By negotiation, contact listing agent

Retail lease opportunity in Forest Hill Shopping Centre; ample paved parking; high visibility with signage opportunities

Geof Ralph | 902-877-9324

**80 PORTLAND STREET, DARTMOUTH****Size** 4,444sq. ft.**Price** By negotiation, contact listing agent

Bright retail space for lease in sought after downtown Dartmouth; High-visibility signage opportunities; currently configured as a modern fitness studio

Geof Ralph | 902-877-9324

**1521 GRAFTON STREET, HALIFAX****Size** Up to 2,138 sq. ft.**Price** By negotiation, contact listing agent

Up to 2,138 sq. ft. of bright retail space (with potential to demise); high traffic pedestrian area; on-site parking; available immediately

Geof Ralph | 902-877-9324

**1801 HOLLIS STREET, HALIFAX****Size** 6,882 sq. ft.**Price** By negotiation, contact listing agent

Located in iconic office downtown Halifax; bright ground floor office or retail space; modern leaseholds in place; on-site parking; available within 60 days

Geof Ralph | 902-877-9324

**3208 ISLEVILLE STREET. HALIFAX****Size** +/- 1,750 sq. ft.**Price** By negotiation, contact listing agent

Bright, ground floor space; located in desired Hydrostone Market District; on-site parking; supported by Corridor (COR) zoning; ideal for small business

Geof Ralph | 902-877-9324

FOR **LEASE**

FOR **SALE**

OFFICE

COMMERCIAL

INDUSTRIAL

ALL CLASSES



### 1521-1531 GRAFTON STREET, HALIFAX

**Size** 525 to 5,250 sq. ft.

**Price** By negotiation, contact listing agent

Office and retail space in downtown Halifax; versatile layout to accommodate tenant's needs; high-profile retail corner available

Geof Ralph | 902-877-9324

FOR LEASE

FOR SALE

OFFICE

COMMERCIAL

INDUSTRIAL

ALL CLASSES

## NEW LISTING



## 35 ISNOR DRIVE, DARTMOUTH

## Size

Building: 4,200 sq. ft.  
Lot: 45,000 sq. ft.

## Price

By negotiation, contact listing agent

Newly renovated mixed-used building and fully fenced lot in Burnside Industrial Park; Well-appointed office space; Available December 1, 2025

Geof Ralph | 902-877-9324

## NEW LISTING



## 10 ILSLEY AVENUE, DARTMOUTH

## Size

5,682 sq. ft.

## Price

By negotiation, contact listing agent

Excellent visibility along Ilsley Avenue; Centrally located; Designated warehouse and office space; Room for a 53' trailer in warehouse; Available January 2026

Geof Ralph | 902-877-9324



## 667 BARNES ROAD, ENFIELD

## Size

29,074 sq. ft.

## Price

By negotiation, contact listing agent

Entire building for lease; eight drive-in and three truck level doors; built out office, lunchroom, and kitchenette; adjacent to airport apron

Geof Ralph | 902-877-9324



## 40-46 BORDEN AVENUE, DARTMOUTH

## Size

4,100 - 29,922 sq. ft.

## Price

By negotiation, contact listing agent

Up to 29,922 sq. ft. available; offers various demising options; dock and grade loading; 20 ft clear heights

Geof Ralph | 902-877-9324



## 192 JOSEPH ZATZMAN DRIVE, DARTMOUTH

## Size

1,931 sq. ft.

## Price

By negotiation, contact listing agent

Well-located within Burnside Industrial Park; dock loading available; 18' clear heights; ample, on-site parking; ideal for service-oriented users

Geof Ralph | 902-877-9324



## 196 JOSEPH ZATZMAN DRIVE, DARTMOUTH

## Size

1,942 to 9,994 sq. ft.

## Price

By negotiation, contact listing agent

Various leasing options available; side double door loading and three dock doors; availability dates vary, contact listing agents for more details

Geof Ralph | 902-877-9324

FOR LEASE

FOR SALE

OFFICE

COMMERCIAL

INDUSTRIAL

ALL CLASSES

## NEW LISTING



## 40 ORION COURT, DARTMOUTH

**Size** Building: 8,400 sq. ft.  
Lot: 2.48-acres

**Price** \$3,950,000

1,500 sq. ft. of office and 6,900 sq. ft. warehouse; Opportunity to purchase existing business for additional \$395,000; Adjacent lot currently leased for fleet storage

Geof Ralph | 902-877-9324



## THE LANDS of WAVERLEY PORTFOLIO, DARTMOUTH

**Size** 52 to 259-acres

**Price** \$950,000 to \$3,650,000

Excellent development opportunity in a growing region; three purchasing options built to meet your needs; water and highway frontage

Geof Ralph | 902-877-9324

## SOLD



## 35 ISNOR DRIVE, DARTMOUTH

**Size** Building: 6,313 sq. ft.  
Lot: 1.6-acres

**Price** \$3,950,000

Newly renovated mixed-used building and fully fenced lot in Burnside Industrial Park; ideal for owner-occupier

Geof Ralph | 902-877-9324



## 5514 CUNARD STREET, HALIFAX

**Size** Building: 5,755 sq. ft.  
Lot: 4,586 sq. ft.

**Price** \$1,100,000

Commercial properties over two contiguous lots in trendy North End Halifax; excellent redevelopment site; ready for a new inspired vision

Matt Ross | 902-324-1101 Ian Stanley | 902-299-7100



## 233 MAIN STREET, LIVERPOOL

**Size** Building: 5,320 sq. ft.  
Lot: 5,106 sq. ft.

**Price** \$250,000

Mixed-use investment property featuring commercial space and a two-bedroom apartment; three to four parking spaces; well-located in town

Matt Ross | 902-324-1101



## 150 HORNE SETTLEMENT ROAD, ENFIELD

**Size** Building: 7,970 sq. ft.  
Lot: 2.88-acres

**Price** \$545,000

Warehouse and operational greenhouse; versatile space equipped with dock and grade loading; situated 850 meters from NS hwy 102

Geof Ralph | 902-877-9324

## UNDER OFFER



## COMMERCIAL LAND, FALL RIVER

**Size** Six parcels of land totaling 15-acres

**Price** \$2,699,000

Commercial land with direct access to two major highways; 800' of highway frontage; land is supported by two distinct zoning categories

Geof Ralph | 902-877-9324



## DOWNTOWN DARTMOUTH

**Size** Six parcels of land totaling 1.63-acres

**Price** By negotiation, contact listing agent

Redevelopment opportunity in downtown Dartmouth; six parcels of land; prime location with exceptionally low residential vacancy rates

Geof Ralph | 902-877-9324

FOR **LEASE**

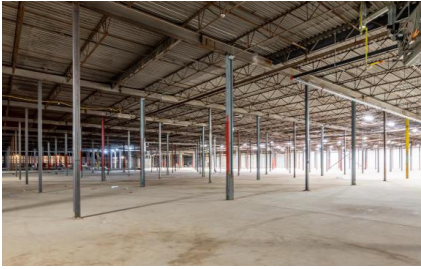
FOR **SALE**

OFFICE

COMMERCIAL

INDUSTRIAL

**ALL CLASSES**



### 114 ACADIA AVENUE, STELLARTON

**Size** 255,000 sq. ft.

**Price** \$8,500,000

1-storey concrete slab facility on 12.56-acres; 11,000 sq. ft. of office space; 56,200 sq. ft. of built out industrial space; equip with 2 grade and 3 dock doors

Geof Ralph | 902-877-9324

# CONTACT US

## Brian Toole

*Principal, Tenant Advisory*

📞 (902) 476-6898  
✉️ [brian@partnersglobal.com](mailto:brian@partnersglobal.com)

## Alison Sowerby

*Vice President, Advisory Services*

📞 (902) 580-0577  
✉️ [alison@partnersglobal.com](mailto:alison@partnersglobal.com)

## Jacquelyn Moriarty

*Associate Advisor*

📞 (902) 440-3937  
✉️ [jacquelyn@partnersglobal.com](mailto:jacquelyn@partnersglobal.com)

## Ian Stanley

*Broker, Principal*

📞 (902) 229-7100  
✉️ [ian@partnersglobal.com](mailto:ian@partnersglobal.com)

## Rod Winters

*Senior Advisor*

📞 (902) 223-5781  
✉️ [rod@partnersglobal.com](mailto:rod@partnersglobal.com)

## Emma Hachey

*Sales & Marketing Coordinator*

📞 (902) 300-9625  
✉️ [emma@partnersglobal.com](mailto:emma@partnersglobal.com)

## Geof Ralph

*Executive Vice President*

📞 (902) 877-9324  
✉️ [geof@partnersglobal.com](mailto:geof@partnersglobal.com)

## Matt Ross

*Associate Advisor*

📞 (902) 324-1101  
✉️ [matt@partnersglobal.com](mailto:matt@partnersglobal.com)

## Rileigh Pugh-Toole

*Property & Office Coordinator*

📞 (902) 444-4004  
✉️ [rileigh@partnersglobal.com](mailto:rileigh@partnersglobal.com)

Partners Global Corporate Real Estate (Partners Global) and its agents and affiliates do not warrant, represent or guarantee the accuracy, completeness or validity of the information provided herein. Parties interested in the property are to conduct their own independent investigations to determine the suitability of the property for their intended use and are strongly urged to discuss the property with their professional advisors. Partners Global expressly disclaims any liability arising out of any errors and omissions in the information. Prospective clients should not confine themselves to the contents but should make their own enquiries to satisfy themselves in all respects. Partners Global will not accept any responsibility should any details prove to be incomplete or incorrect.